

For Research Use Only

ORAI1 Polyclonal antibody

Catalog Number: 14443-1-AP

1 Publications



Basic Information

Catalog Number:

14443-1-AP

Size:

150ul, Concentration: 140 ug/ml by Bradford method using BSA as the standard;

Source:

Rabbit

Isotype:

IgG

GenBank Accession Number:

NM_032790

GeneID (NCBI):

84876

UNIPROT ID:

Q96D31

Full Name:

ORAI calcium release-activated calcium modulator 1

Calculated MW:

35 kDa

Observed MW:

44 kDa

Purification Method:

Antigen affinity purification

Recommended Dilutions:

WB: 1:200-1:1000

IHC: 1:20-1:200

Applications

Tested Applications:

WB, IHC, ELISA

Cited Applications:

WB

Species Specificity:

human, mouse, rat

Cited Species:

rat

Positive Controls:

WB : human spleen tissue,

IHC : human colon cancer tissue,

Note-IHC: suggested antigen retrieval with TE buffer pH 9.0; (*) Alternatively, antigen retrieval may be performed with citrate buffer pH 6.0

Background Information

Store-operated calcium channels (SOCs) play essential functions in various physiological processes. Orai1 (also named CRACM1) is a critical molecular component of SOCs. Orai1 protein is a 35-45 kDa plasma membrane protein with 4 transmembrane domains. Human patients with a severe combined immunodeficiency (SCID) syndrome possess point mutations in Orai1 gene. This antibody may be used to block the ion currents mediated by Orai1. ORAI1 contains 2 isoforms produced by alternative initiation (uniprot: Q96D31). Catalog#14443-1-AP only recognises alpha isoform.

Notable Publications

Author	Pubmed ID	Journal	Application
Selina M Garcia	32702049	PLoS One	WB

Storage

Storage:

Store at -20°C. Stable for one year after shipment.

Storage Buffer:

PBS with 0.02% sodium azide and 50% glycerol, pH7.3

Aliquoting is unnecessary for -20°C storage

*** 20ul sizes contain 0.1% BSA

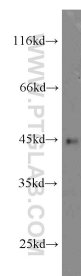
For technical support and original validation data for this product please contact:

T: 1 (888) 4PTGLAB (1-888-478-4522) (toll free in USA), or 1(312) 455-8498 (outside USA)

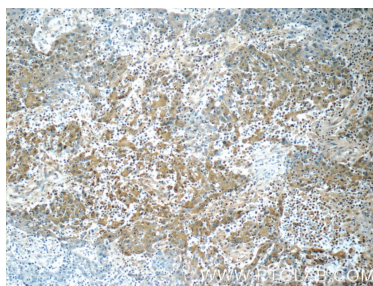
E: proteintech@ptglab.com
W: ptglab.com

This product is exclusively available under Proteintech Group brand and is not available to purchase from any other manufacturer.

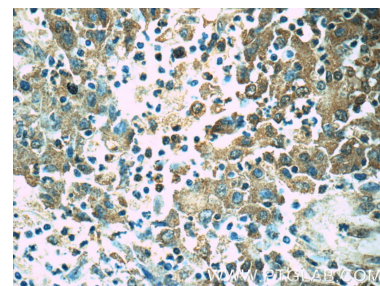
Selected Validation Data



human spleen tissue were subjected to SDS PAGE followed by western blot with 14443-1-AP (Orai1-Alpha antibody) at dilution of 1:300 incubated at room temperature for 1.5 hours.



Immunohistochemical analysis of paraffin-embedded human colon cancer tissue slide using 14443-1-AP (Orai1-Alpha antibody at dilution of 1:50 (under 10x lens).



Immunohistochemical analysis of paraffin-embedded human colon cancer tissue slide using 14443-1-AP (Orai1-Alpha antibody at dilution of 1:50 (under 40x lens).