

For Research Use Only

Phospho-RCC1 (Ser11) Polyclonal antibody



Catalog Number: 14444-1-AP

Basic Information

Catalog Number: 14444-1-AP	GenBank Accession Number: NM_001048194	Purification Method: Antigen affinity purification
Size: 100ul , Concentration: 550 µg/ml by Nanodrop;	GeneID (NCBI): 1104	Recommended Dilutions: WB 1:1000-1:8000
Source: Rabbit	Full Name: regulator of chromosome condensation 1	
Isotype: IgG	Calculated MW: 48 kDa	
	Observed MW: 45-50 kDa	

Applications

Tested Applications: WB, ELISA	Positive Controls: WB : A431 cells,
Species Specificity: human	

Background Information

CHC1, also named as RCC1, promotes the exchange of ran-bound gdp by gtp. It is involved in the regulation of onset of chromosome condensation in the S-phase. Phosphorylation of RCC1 on serines located in or near its nuclear localization signal activates RCC1 to generate RanGTP on mitotic chromosomes, which is required for spindle assembly and chromosome segregation. This antibody is a rabbit polyclonal antibody raised against human phospho-CHC1(Ser11) antigen.

Storage

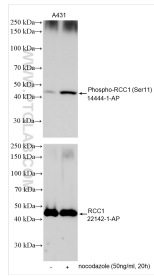
Storage:
Store at -20°C. Stable for one year after shipment.
Storage Buffer:
PBS with 0.02% sodium azide and 50% glycerol pH 7.3.
Aliquoting is unnecessary for -20°C storage

*** 20ul sizes contain 0.1% BSA

For technical support and original validation data for this product please contact:
T: 1 (888) 4PTGLAB (1-888-478-4522) (toll free in USA), or 1(312) 455-8498 (outside USA) E: proteintech@ptglab.com W: ptglab.com

This product is exclusively available under Proteintech Group brand and is not available to purchase from any other manufacturer.

Selected Validation Data



Non-treated and nocodazole treated A431 cells were subjected to SDS PAGE followed by western blot with 14444-1-AP (Phospho-RCC1 (Ser11) antibody) at dilution of 1:4000 incubated at room temperature for 1.5 hours. The membrane was stripped and re-blotted with RCC1 antibody (22142-1-AP) subsequently.