

For Research Use Only

RABGGTA Polyclonal antibody, PBS Only

Catalog Number: 14448-1-PBS

Featured Product



Basic Information

Catalog Number:

14448-1-PBS

Size:

100ug, Concentration: 1 mg/ml by Nanodrop;

Source:

Rabbit

Isotype:

IgG

Immunogen Catalog Number:

AG5923

GenBank Accession Number:

BC003093

GeneID (NCBI):

5875

UNIPROT ID:

Q92696

Full Name:

Rab geranylgeranyltransferase, alpha subunit

Calculated MW:

65 kDa

Observed MW:

60-65 kDa

Purification Method:

Antigen affinity purification

Applications

Tested Applications:

WB, IHC, IF/ICC, Indirect ELISA

Species Specificity:

human, mouse

Background Information

GGTase II (RAB geranylgeranyl transferase, RABGGTase) is a heterodimer composed of tightly bound α - and β -subunits, which belongs to the Ras superfamily of small monomeric GTPases. RABGGTase is extensively involved in intracellular membrane trafficking of membrane-bound organelles and vesicles and specifically catalyses the covalent attachment of GGPP to the cysteine of a carboxyl-terminal CC or CXC motif of RAB proteins (PMID 11136552, 10737774, 35961942).

Storage

Storage:

Store at -80°C.

Storage Buffer:

PBS only, pH7.3

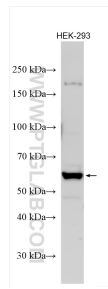
For technical support and original validation data for this product please contact:

T: 1 (888) 4PTGLAB (1-888-478-4522) (toll free in USA), or 1(312) 455-8498 (outside USA)

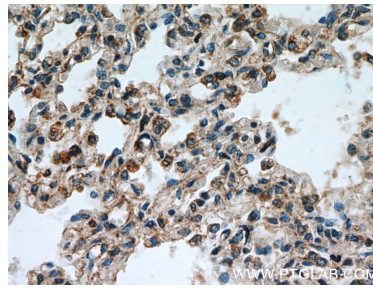
E: proteintech@ptglab.com
W: ptglab.com

This product is exclusively available under Proteintech Group brand and is not available to purchase from any other manufacturer.

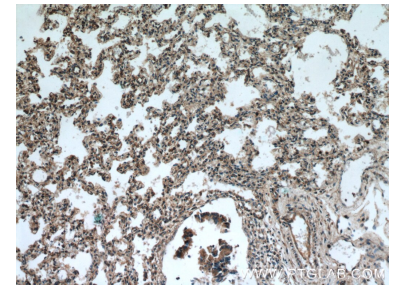
Selected Validation Data



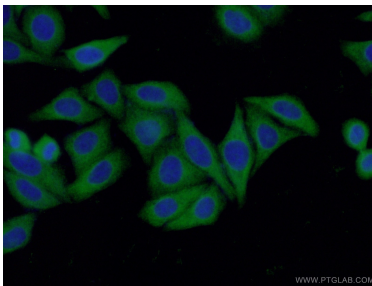
HEK-293 cells were subjected to SDS PAGE followed by western blot with 14448-1-AP (RABGGTA antibody) at dilution of 1:2000 incubated at room temperature for 1.5 hours. This data was developed using the same antibody clone with 14448-1-PBS in a different storage buffer formulation.



Immunohistochemical analysis of paraffin-embedded human lung using 14448-1-AP (RABGGTA antibody) at dilution of 1:100 (under 40x lens). This data was developed using the same antibody clone with 14448-1-PBS in a different storage buffer formulation.



Immunohistochemical analysis of paraffin-embedded human lung using 14448-1-AP (RABGGTA antibody) at dilution of 1:100 (under 10x lens). This data was developed using the same antibody clone with 14448-1-PBS in a different storage buffer formulation.



Immunofluorescent analysis of (-20°C Ethanol) fixed HepG2 cells using 14448-1-AP (RABGGTA antibody) at dilution of 1:50 and Alexa Fluor 488-conjugated AffiniPure Goat Anti-Rabbit IgG(H+L). This data was developed using the same antibody clone with 14448-1-PBS in a different storage buffer formulation.