

For Research Use Only

# KLHL2 Polyclonal antibody

Catalog Number: 14449-1-AP



## Basic Information

<b>Catalog Number:</b> 14449-1-AP	<b>GenBank Accession Number:</b> BC022503	<b>Purification Method:</b> Antigen affinity purification
<b>Size:</b> 150ul , Concentration: 220 ug/ml by Bradford method using BSA as the standard;	<b>GeneID (NCBI):</b> 11275	<b>Recommended Dilutions:</b> WB 1:5000-1:50000
<b>Source:</b> Rabbit	<b>UNIPROT ID:</b> O95198	<b>IF/ICC 1:200-1:800</b>
<b>Isotype:</b> IgG	<b>Full Name:</b> kelch-like 2, Mayven (Drosophila)	
<b>Immunogen Catalog Number:</b> AG5950	<b>Calculated MW:</b> 66 kDa	
	<b>Observed MW:</b> 66 kDa	

## Applications

<b>Tested Applications:</b> WB, IF/ICC, ELISA	<b>Positive Controls:</b>
<b>Species Specificity:</b> human, mouse, rat	<b>WB :</b> K-562 cells, human brain tissue, MCF-7 cells, SH-SY5Y cells
	<b>IF/ICC :</b> MCF-7 cells,

## Background Information

KLHL2 contains an SH3-binding domain in the N terminus and a POZ domain and 6 tandem repeats of approximately 50 amino acids each in the C terminus. In astrocytoma/glioblastoma cells, KLHL2 colocalized with actin filaments in the cytoskeleton remodeling regions in stress fibers and in patchy cortical actin-rich regions of the cell margins. In primary rat hippocampal neurons, it was highly expressed in the cell body and in neurite processes(PMID: 10397770).

## Storage

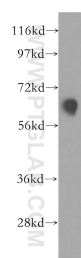
**Storage:**  
Store at -20°C. Stable for one year after shipment.  
**Storage Buffer:**  
PBS with 0.02% sodium azide and 50% glycerol pH 7.3.  
**Aliquoting is unnecessary for -20°C storage**

\*\*\* 20ul sizes contain 0.1% BSA

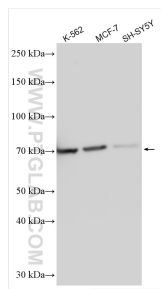
For technical support and original validation data for this product please contact:  
T: 1 (888) 4PTGLAB (1-888-478-4522) (toll free in USA), or 1(312) 455-8498 (outside USA)  
E: [proteintech@ptglab.com](mailto:proteintech@ptglab.com)  
W: [ptglab.com](http://ptglab.com)

This product is exclusively available under Proteintech Group brand and is not available to purchase from any other manufacturer.

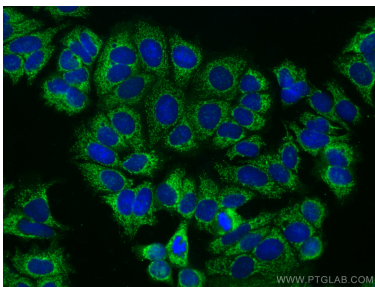
## Selected Validation Data



MCF7 cells were subjected to SDS PAGE followed by western blot with 14449-1-AP (KLHL2 antibody) at dilution of 1:500 incubated at room temperature for 1.5 hours.



Various lysates were subjected to SDS PAGE followed by western blot with 14449-1-AP (KLHL2 antibody) at dilution of 1:10000 incubated at room temperature for 1.5 hours.



Immunofluorescent analysis of (-20°C Methanol) fixed MCF-7 cells using KLHL2 antibody (14449-1-AP) at dilution of 1:400 and CoraLite®488-Conjugated AffiniPure Goat Anti-Rabbit IgG(H+L) (SA00013-2).