

For Research Use Only

# KLHL2 Polyclonal antibody, PBS Only

Catalog Number: 14449-1-PBS



## Basic Information

Catalog Number:

14449-1-PBS

Size:

100ug, Concentration: 1 mg/ml by Nanodrop;

Source:

Rabbit

Isotype:

IgG

Immunogen Catalog Number:

AG5950

GenBank Accession Number:

BC022503

GeneID (NCBI):

11275

UNIPROT ID:

O95198

Full Name:

kelch-like 2, Mayven (Drosophila)

Calculated MW:

66 kDa

Observed MW:

66 kDa

Purification Method:

Antigen affinity purification

## Applications

Tested Applications:

WB, IF/ICC, Indirect ELISA

Species Specificity:

human, mouse, rat

## Background Information

KLHL2 contains an SH3-binding domain in the N terminus and a POZ domain and 6 tandem repeats of approximately 50 amino acids each in the C terminus. In astrocytoma/glioblastoma cells, KLHL2 colocalized with actin filaments in the cytoskeleton remodeling regions in stress fibers and in patchy cortical actin-rich regions of the cell margins. In primary rat hippocampal neurons, it was highly expressed in the cell body and in neurite processes (PMID: 10397770).

## Storage

Storage:

Store at -80°C.

Storage Buffer:

PBS Only

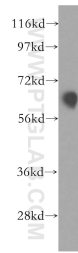
For technical support and original validation data for this product please contact:

T: 1 (888) 4PTGLAB (1-888-478-4522) (toll free in USA), or 1(312) 455-8498 (outside USA)

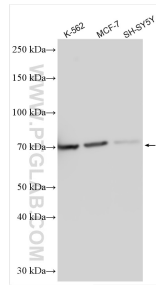
E: [proteintech@ptglab.com](mailto:proteintech@ptglab.com)  
W: [ptglab.com](http://ptglab.com)

**This product is exclusively available under Proteintech Group brand and is not available to purchase from any other manufacturer.**

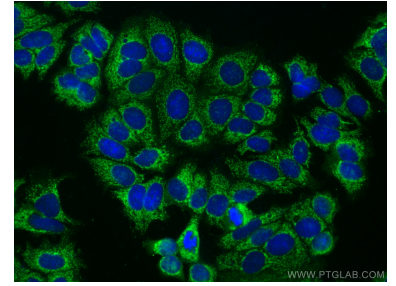
## Selected Validation Data



MCF7 cells were subjected to SDS PAGE followed by western blot with 14449-1-AP (KLHL2 antibody) at dilution of 1:500 incubated at room temperature for 1.5 hours. This data was developed using the same antibody clone with 14449-1-PBS in a different storage buffer formulation.



Various lysates were subjected to SDS PAGE followed by western blot with 14449-1-AP (KLHL2 antibody) at dilution of 1:10000 incubated at room temperature for 1.5 hours. This data was developed using the same antibody clone with 14449-1-PBS in a different storage buffer formulation.



Immunofluorescent analysis of (-20°C Methanol) fixed MCF-7 cells using KLHL2 antibody (14449-1-AP) at dilution of 1:400 and CoraLite®488-Conjugated AffiniPure Goat Anti-Rabbit IgG(H+L) (SA00013-2). This data was developed using the same antibody clone with 14449-1-PBS in a different storage buffer formulation.