

For Research Use Only

PLVAP Polyclonal antibody

Catalog Number: 14452-1-AP

9 Publications



Basic Information

Catalog Number:

14452-1-AP

Size:

150ul, Concentration: 500 ug/ml by Nanodrop;

Source:

Rabbit

Isotype:

IgG

Immunogen Catalog Number:

AG5963

GenBank Accession Number:

BC056414

GeneID (NCBI):

83483

UNIPROT ID:

Q9BX97

Full Name:

plasmalemma vesicle associated protein

Calculated MW:

51 kDa

Observed MW:

50-60 kDa

Purification Method:

Antigen affinity purification

Recommended Dilutions:

WB 1:1000-1:9000

Applications

Tested Applications:

WB, ELISA

Cited Applications:

WB, IF

Species Specificity:

human, mouse, rat

Cited Species:

human, mouse, pig

Positive Controls:

WB : HEK-293 cells, L02 cells, mouse liver tissue, rat liver tissue

Notable Publications

Author	Pubmed ID	Journal	Application
Sang A Kim	31759628	Biochem Biophys Res Commun	WB
Jenna Mazzoni	29154126	Neuron	WB
Noémie Jean LeBlanc	30852795	Mol Neurobiol	WB

Storage

Storage:

Store at -20°C. Stable for one year after shipment.

Storage Buffer:

PBS with 0.02% sodium azide and 50% glycerol pH 7.3.

Aliquoting is unnecessary for -20°C storage

*** 20ul sizes contain 0.1% BSA

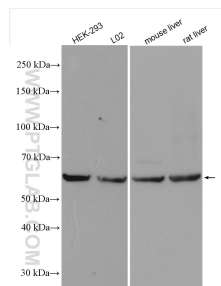
For technical support and original validation data for this product please contact:

T: 1 (888) 4PTGLAB (1-888-478-4522) (toll free in USA), or 1(312) 455-8498 (outside USA)

E: proteintech@ptglab.com
W: ptglab.com

This product is exclusively available under Proteintech Group brand and is not available to purchase from any other manufacturer.

Selected Validation Data



Various lysates were subjected to SDS PAGE followed by western blot with 14452-1-AP (PLVAP antibody) at dilution of 1:4500 incubated at room temperature for 1.5 hours.