

For Research Use Only

FECH Polyclonal antibody

Catalog Number: 14466-1-AP **23 Publications**



Basic Information

Catalog Number: 14466-1-AP	GenBank Accession Number: BC039841	Purification Method: Antigen affinity purification
Size: 150ul , Concentration: 500 ug/ml by Nanodrop;	GeneID (NCBI): 2235	Recommended Dilutions: WB 1:500-1:2000 IHC 1:100-1:400
Source: Rabbit	UNIPROT ID: P22830	
Isotype: IgG	Full Name: ferrochelatase (protoporphyrin)	
Immunogen Catalog Number: AG5814	Calculated MW: 48 kDa	
	Observed MW: 40-48 kDa	

Applications

Tested Applications: WB, IHC, ELISA	Positive Controls:
Cited Applications: WB, IHC	WB : mouse heart tissue, human liver tissue, HepG2 cells, human heart tissue, K-562 cells, mouse kidney tissue
Species Specificity: human, mouse	IHC : human heart tissue,
Cited Species: human, mouse, rat	
Note-IHC: suggested antigen retrieval with TE buffer pH 9.0; (*) Alternatively, antigen retrieval may be performed with citrate buffer pH 6.0	

Background Information

FECH(ferrochelatase, mitochondrial) is also named as heme synthase, protoheme ferro-lyase and belongs to the ferrochelatase family. It is a homodimeric (86 kDa) mitochondrial membrane-associated enzyme that catalyzes the insertion of ferrous iron into protoporphyrin to form heme(PMID:11175906). It has 2 isoforms produced by alternative splicing and the full length protein has a transit peptide with 54 amino acids.

Notable Publications

Author	Pubmed ID	Journal	Application
Naiara Santana-Codina	35771492	Cancer Discov	WB
Ying Wang	34707288	Nature	WB
Mario Mischkulnig	35665365	Front Med (Lausanne)	IHC

Storage

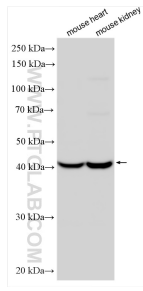
Storage:
Store at -20°C. Stable for one year after shipment.
Storage Buffer:
PBS with 0.02% sodium azide and 50% glycerol pH 7.3.
Aliquoting is unnecessary for -20°C storage

*** 20ul sizes contain 0.1% BSA

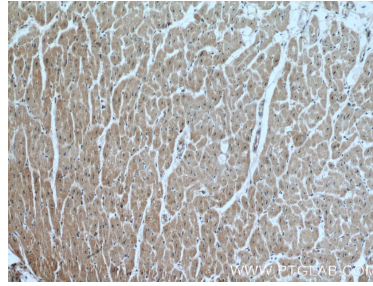
For technical support and original validation data for this product please contact:
T: 1 (888) 4PTGLAB (1-888-478-4522) (toll free in USA), or 1(312) 455-8498 (outside USA)
E: proteintech@ptglab.com
W: ptglab.com

This product is exclusively available under Proteintech Group brand and is not available to purchase from any other manufacturer.

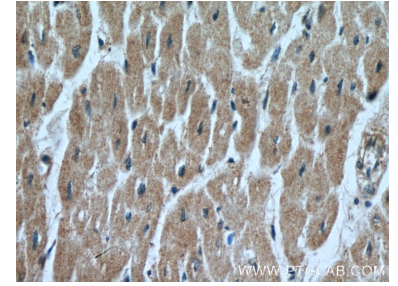
Selected Validation Data



mouse heart tissue were subjected to SDS PAGE followed by western blot with 14466-1-AP (FECH antibody) at dilution of 1:1000 incubated at room temperature for 1.5 hours.



Immunohistochemical analysis of paraffin-embedded human heart tissue slide using 14466-1-AP (FECH Antibody) at dilution of 1:200 (under 10x lens).



Immunohistochemical analysis of paraffin-embedded human heart tissue slide using 14466-1-AP (FECH Antibody) at dilution of 1:200 (under 40x lens).