

For Research Use Only

GSTA1 Polyclonal antibody

Catalog Number: 14475-1-AP

Featured Product

21 Publications



Basic Information

Catalog Number:

14475-1-AP

Size:

150ul, Concentration: 700 ug/ml by Nanodrop and 400 ug/ml by Bradford method using BSA as the standard;

Source:

Rabbit

Isotype:

IgG

Immunogen Catalog Number:

AG5849

GenBank Accession Number:

BC053578

GeneID (NCBI):

2938

UNIPROT ID:

P08263

Full Name:

glutathione S-transferase alpha 1

Calculated MW:

26 kDa

Observed MW:

26 kDa

Purification Method:

Antigen affinity purification

Recommended Dilutions:

WB: 1:1000-1:6000

IP: 0.5-4.0 ug for 1.0-3.0 mg of total protein lysate

IHC: 1:200-1:800

IF/ICC: 1:50-1:500

Applications

Tested Applications:

WB, IHC, IF/ICC, IP, ELISA

Cited Applications:

WB, IHC

Species Specificity:

human, mouse, rat

Cited Species:

human, mouse, rat

Note-IHC: suggested antigen retrieval with TE buffer pH 9.0; (*) Alternatively, antigen retrieval may be performed with citrate buffer pH 6.0

Positive Controls:

WB: mouse kidney tissue, human kidney tissue, HepG2 cells, mouse liver tissue, rat kidney tissue, rat liver tissue

IP: mouse liver tissue,

IHC: human lung cancer tissue, human liver tissue, human colon cancer tissue, human kidney tissue

IF/ICC: HepG2 cells,

Background Information

GSTA1 encodes one of the GST alpha isozymes, belongs to GST family, which is mainly expressed in the liver. GST can improve the detoxification of organism by enzymatic and non-enzymatic methods, and has anti-mutagenic and anti-tumor effects. Studies have shown that overexpression of GSTA1 can promote the development of lung cancer cells, so the expression level of GSTA1 can be used to predict the degree of malignancy of lung cancer tissues. To some extent, GSTA1 is regarded as a potential lung cancer candidate targets.

Notable Publications

Author	Pubmed ID	Journal	Application
Eileen Dahlke	36077596	Int J Mol Sci	WB, IHC
Rojanathammanee Lalida L	24285747	J Gerontol A Biol Sci Med Sci	WB
Yoko Ito	33237957	PLoS One	WB

Storage

Storage:

Store at -20°C. Stable for one year after shipment.

Storage Buffer:

PBS with 0.02% sodium azide and 50% glycerol, pH7.3

Aliquoting is unnecessary for -20°C storage

*** 20ul sizes contain 0.1% BSA

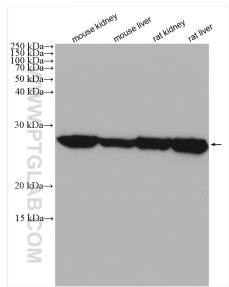
For technical support and original validation data for this product please contact:

T: 1 (888) 4PTGLAB (1-888-478-4522) (toll free in USA), or 1(312) 455-8498 (outside USA)

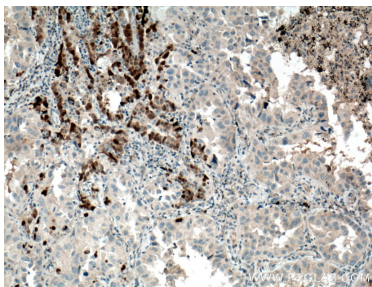
E: proteintech@ptglab.com
W: ptglab.com

This product is exclusively available under Proteintech Group brand and is not available to purchase from any other manufacturer.

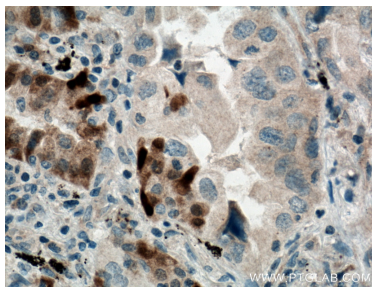
Selected Validation Data



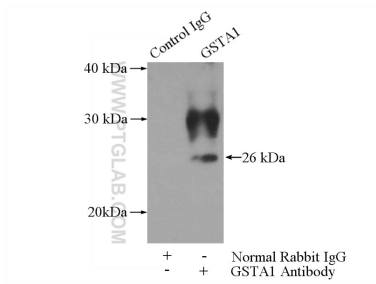
Various lysates were subjected to SDS PAGE followed by western blot with 14475-1-AP (GSTA1 antibody) at dilution of 1:3000 incubated at room temperature for 1.5 hours.



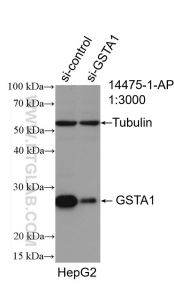
Immunohistochemical analysis of paraffin-embedded human lung cancer tissue slide using 14475-1-AP (GSTA1 antibody) at dilution of 1:400 (under 10x lens. Heat mediated antigen retrieval with Tris-EDTA buffer (pH 9.0).



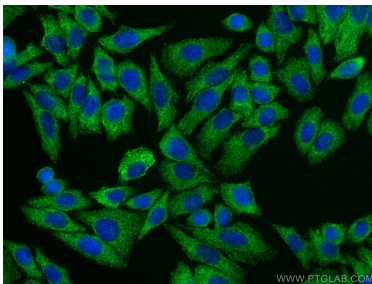
Immunohistochemical analysis of paraffin-embedded human lung cancer tissue slide using 14475-1-AP (GSTA1 antibody) at dilution of 1:400 (under 40x lens. Heat mediated antigen retrieval with Tris-EDTA buffer (pH 9.0).



IP result of anti-GSTA1 (IP:14475-1-AP, 3ug; Detection:14475-1-AP 1:500) with mouse liver tissue lysate 4000ug.



WB result of GSTA1 antibody (14475-1-AP; 1:3000; incubated at room temperature for 1.5 hours) with sh-Control and sh-GSTA1 transfected HepG2 cells.



Immunofluorescent analysis of (-20°C Methanol) fixed HepG2 cells using GSTA1 antibody (14475-1-AP) at dilution of 1:200 and CoraLite®488-Conjugated Goat Anti-Rabbit IgG(H+L).