

For Research Use Only

LCOR Polyclonal antibody

Catalog Number: 14476-1-AP



Basic Information

Catalog Number: 14476-1-AP	GenBank Accession Number: BC053359	Purification Method: Antigen affinity purification
Size: 150ul , Concentration: 133 ug/ml by Nanodrop and 133 ug/ml by Bradford method using BSA as the standard;	GeneID (NCBI): 84458	Recommended Dilutions: WB 1:200-1:1000
Source: Rabbit	UNIPROT ID: Q96JNO	IHC 1:20-1:200
Isotype: IgG	Full Name: ligand dependent nuclear receptor corepressor	IF/ICC 1:50-1:500
Immunogen Catalog Number: AG5851	Calculated MW: 47 kDa	
	Observed MW: 50 kDa	

Applications

Tested Applications: WB, IHC, IF/ICC, ELISA	Positive Controls:
Species Specificity: human, mouse, rat	WB : HeLa cells,
Note-IHC: suggested antigen retrieval with TE buffer pH 9.0; (*) Alternatively, antigen retrieval may be performed with citrate buffer pH 6.0	IHC : human endometrial cancer tissue,
	IF/ICC : HeLa cells,

Background Information

LCOR is a transcriptional corepressor widely expressed in fetal and adult tissues that is recruited to agonist-bound nuclear receptors through a single LxxLL motif, also referred to as a nuclear receptor (NR) box [PMID:12535528]. It functions through recruitment of C-terminal binding proteins (CtBPs) and histone deacetylases (HDACs) to its N-terminal and central domains, respectively [PMID:22277651]. It is a scaffold for both histone deacetylases (HDACs) and C-terminal binding protein (CtBP) corepressors and functions by both HDAC-dependent and -independent mechanisms in a receptor-specific manner [PMID:19744932].

Storage

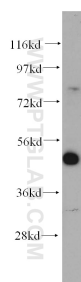
Storage:
Store at -20°C. Stable for one year after shipment.
Storage Buffer:
PBS with 0.02% sodium azide and 50% glycerol pH 7.3.
Aliquoting is unnecessary for -20°C storage

*** 20ul sizes contain 0.1% BSA

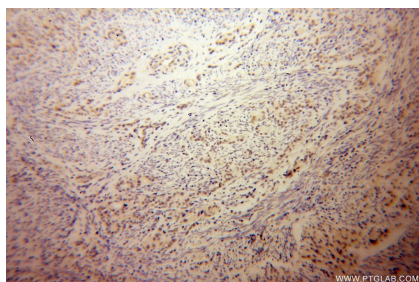
For technical support and original validation data for this product please contact:
T: 1 (888) 4PTGLAB (1-888-478-4522) (toll free in USA), or 1(312) 455-8498 (outside USA)
E: proteintech@ptglab.com
W: ptglab.com

This product is exclusively available under Proteintech Group brand and is not available to purchase from any other manufacturer.

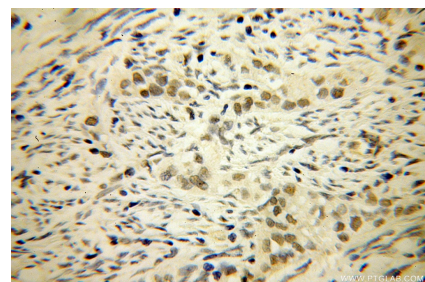
Selected Validation Data



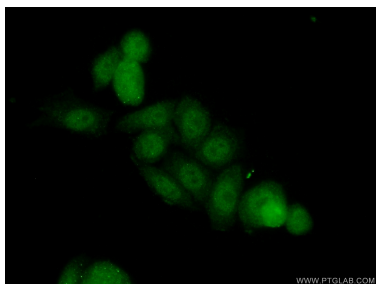
HeLa cells were subjected to SDS PAGE followed by western blot with 14476-1-AP (LCOR antibody) at dilution of 1:300 incubated at room temperature for 1.5 hours.



Immunohistochemical analysis of paraffin-embedded human endometrial cancer using 14476-1-AP (LCOR antibody) at dilution of 1:50 (under 10x lens).



Immunohistochemical analysis of paraffin-embedded human endometrial cancer using 14476-1-AP (LCOR antibody) at dilution of 1:50 (under 40x lens).



Immunofluorescent analysis of (10% Formaldehyde) fixed HeLa cells using 14476-1-AP (LCOR antibody) at dilution of 1:50 and Alexa Fluor 488-conjugated Goat Anti-Rabbit IgG(H+L).