

For Research Use Only

TFE3 Polyclonal antibody

Catalog Number: 14480-1-AP

Featured Product

15 Publications



Basic Information

Catalog Number:

14480-1-AP

Size:

150ul, Concentration: 600 µg/ml by Nanodrop;

Source:

Rabbit

Isotype:

IgG

Immunogen Catalog Number:

AG5863

GenBank Accession Number:

BC026027

GeneID (NCBI):

7030

UNIPROT ID:

P19532

Full Name:

transcription factor binding to IGHM enhancer 3

Calculated MW:

62 kDa

Observed MW:

70 kDa

Purification Method:

Antigen affinity purification

Recommended Dilutions:

WB 1:500-1:2000

IP 0.5-4.0 µg for 1.0-3.0 mg of total protein lysate

IHC 1:50-1:500

Applications

Tested Applications:

IHC, IP, WB, ELISA

Cited Applications:

WB, IP, IF, ChIP

Species Specificity:

human, mouse, rat

Cited Species:

human, rat, mouse

Note-IHC: suggested antigen retrieval with TE buffer pH 9.0; (*) Alternatively, antigen retrieval may be performed with citrate buffer pH 6.0

Positive Controls:

WB: K-562 cells, human brain tissue, mouse spleen tissue, rat brain tissue

IP: K-562 cells,

IHC: human renal cell carcinoma tissue,

Background Information

The protein encoded by this gene is a subunit of the CRSP (cofactor required for SP1 activation) complex, which, along with TFIIID, is required for efficient activation by SP1. This protein is also a component of other multisubunit complexes e.g. thyroid hormone receptor-(TR-) associated proteins which interact with TR and facilitate TR function on DNA templates in conjunction with initiation factors and cofactors.

Notable Publications

Author	Pubmed ID	Journal	Application
Bo Wang	33019842	Autophagy	WB, IF, IP
Sebastian Boland	36207292	Nat Commun	WB
Xiu-Lei Zhang	31103748	Biochim Biophys Acta Gen Subj	WB

Storage

Storage:

Store at -20°C. Stable for one year after shipment.

Storage Buffer:

PBS with 0.02% sodium azide and 50% glycerol pH 7.3.

Aliquoting is unnecessary for -20°C storage

*** 20ul sizes contain 0.1% BSA

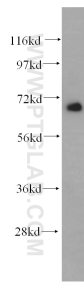
For technical support and original validation data for this product please contact:

T: 1 (888) 4PTGLAB (1-888-478-4522) (toll free in USA), or 1(312) 455-8498 (outside USA)

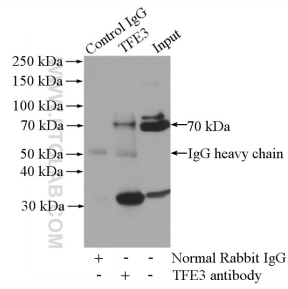
E: proteintech@ptglab.com
W: ptglab.com

This product is exclusively available under Proteintech Group brand and is not available to purchase from any other manufacturer.

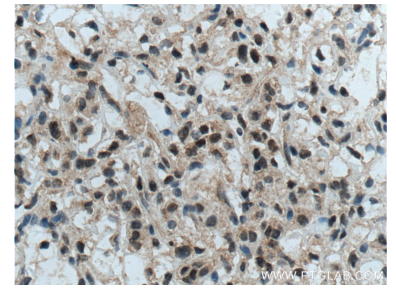
Selected Validation Data



K-562 cells were subjected to SDS PAGE followed by western blot with 14480-1-AP (TFE3 antibody) at dilution of 1:500 incubated at room temperature for 1.5 hours.



IP result of anti-TFE3 (IP:14480-1-AP, 4 μ g; Detection:14480-1-AP 1:500) with K-562 cells lysate 1200 μ g.



Immunohistochemical analysis of paraffin-embedded human renal cell carcinoma tissue slide using 14480-1-AP (TFE3 Antibody) at dilution of 1:200 (under 40x lens). Heat mediated antigen retrieval with Tris-EDTA buffer (pH 9.0).