

For Research Use Only

# Gastrokeine 1 Polyclonal antibody

Catalog Number: 14494-1-AP



## Basic Information

|  |  |   |
|--|--|---|
| <b>Catalog Number:</b><br>14494-1-AP   | <b>GenBank Accession Number:</b><br>BC059778 | <b>Purification Method:</b><br>Antigen affinity purification        |
| <b>Size:</b><br>150ul , Concentration: 260 ug/ml by Nanodrop and 220 ug/ml by Bradford method using BSA as the standard; | <b>GeneID (NCBI):</b><br>56287               | <b>Recommended Dilutions:</b><br>WB 1:1000-1:4000<br>IHC 1:50-1:500 |
| <b>Source:</b><br>Rabbit   | <b>UNIPROT ID:</b><br>Q9NS71                 |   |
| <b>Isotype:</b><br>IgG   | <b>Full Name:</b><br>gastrokeine 1           |   |
| <b>Immunogen Catalog Number:</b><br>AG5898   | <b>Calculated MW:</b><br>22 kDa              |   |
|  | <b>Observed MW:</b><br>20-22 kDa             |   |

## Applications

|   |  |
|---|--|
| <b>Tested Applications:</b><br>WB, IHC, ELISA   | <b>Positive Controls:</b>  |
| <b>Species Specificity:</b><br>human, mouse, rat  | <b>WB :</b> human stomach tissue, mouse stomach tissue, rat stomach tissue |
| <b>Note-IHC:</b> suggested antigen retrieval with <b>TE buffer pH 9.0; (*) Alternatively, antigen retrieval may be performed with citrate buffer pH 6.0</b> | <b>IHC :</b> human stomach tissue, human stomach cancer tissue             |

## Background Information

Gastrokeine 1 (GKN1), a stomach-specific protein also known as 18 kDa antrum mucosa protein (AMP-18) or foveolin, belongs to the gastrokeine family of gastric mucus cell-secreted proteins. The human GKN1 gene has been localized in a region of chromosome 2p13 of about 6 kb and contains 6 exons. GKN1 is expressed only in normal human stomach, but is absent from gastric adenocarcinomas, gastro-esophageal adenocarcinoma cell lines, and other normal and tumor gastro-intestinal tissues. GKN1 may play an important role in normal gastric function and may be a gastric tumour suppressor.

## Storage

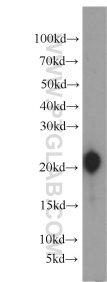
**Storage:**  
Store at -20°C. Stable for one year after shipment.  
**Storage Buffer:**  
PBS with 0.02% sodium azide and 50% glycerol pH 7.3.  
Aliquoting is unnecessary for -20°C storage

\*\*\* 20ul sizes contain 0.1% BSA

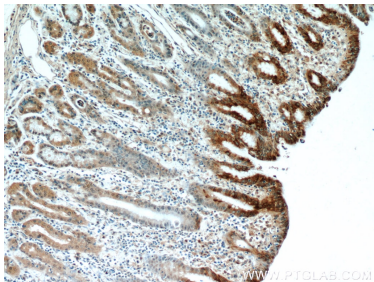
For technical support and original validation data for this product please contact:  
T: 1 (888) 4PTGLAB (1-888-478-4522) (toll free in USA), or 1(312) 455-8498 (outside USA)  
E: [proteintech@ptglab.com](mailto:proteintech@ptglab.com)  
W: [ptglab.com](http://ptglab.com)

This product is exclusively available under Proteintech Group brand and is not available to purchase from any other manufacturer.

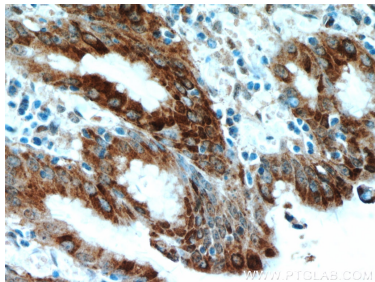
Selected Validation Data



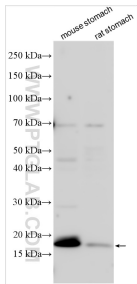
human stomach tissue were subjected to SDS PAGE followed by western blot with 14494-1-AP (Gastrokine 1 antibody) at dilution of 1:2000 incubated at room temperature for 1.5 hours.



Immunohistochemical analysis of paraffin-embedded human stomach using 14494-1-AP (Gastrokine 1 antibody) at dilution of 1:100 (under 10x lens).



Immunohistochemical analysis of paraffin-embedded human stomach using 14494-1-AP (Gastrokine 1 antibody) at dilution of 1:100 (under 40x lens).



Various lysates were subjected to SDS PAGE followed by western blot with 14494-1-AP (Gastrokine 1 antibody) at dilution of 1:500 incubated at room temperature for 1.5 hours.