

For Research Use Only

CROP Polyclonal antibody

Catalog Number: 14504-1-AP

Featured Product

6 Publications



Basic Information

Catalog Number:

14504-1-AP

Size:

150ul, Concentration: 500 ug/ml by Nanodrop and 280 ug/ml by Bradford method using BSA as the standard;

Source:

Rabbit

Isotype:

IgG

Immunogen Catalog Number:

AG5961

GenBank Accession Number:

BC056409

GeneID (NCBI):

51747

UNIPROT ID:

O95232

Full Name:

cisplatin resistance-associated overexpressed protein

Calculated MW:

51 kDa

Observed MW:

55-58 kDa

Purification Method:

Antigen affinity purification

Recommended Dilutions:

WB 1:500-1:1000

IP 0.5-4.0 ug for 1.0-3.0 mg of total protein lysate

IHC 1:200-1:800

IF/ICC 1:50-1:500

Applications

Tested Applications:

WB, IHC, IF/ICC, IP, ELISA

Cited Applications:

WB, IHC, IP

Species Specificity:

human, mouse

Cited Species:

human, mouse

Note-IHC: suggested antigen retrieval with TE buffer pH 9.0; (*) Alternatively, antigen retrieval may be performed with citrate buffer pH 6.0

Positive Controls:

WB: Jurkat cells, HepG2 cells, mouse brain tissue

IP: HepG2 cells,

IHC: human ovary cancer tissue, human ovary tissue, human pancreas cancer tissue

IF/ICC: HepG2 cells,

Background Information

CROP, a putative SR protein, contain cystine/histidine motifs and leucine zipper-like repeats in the N-terminal half and consists mostly of charged and polar amino acids in the C-terminal half. CROP has a high expression in heart, brain, pancreas, thymus, and weak in lung, liver and kidney. As the human homologue of yeast Luc7p, CROP is supported to be participated in 5'-splice site recognize and is essential for vegetative growth. This is a rabbit polyclonal antibody raised against part of N-terminus of CROP of human origin, and can recognize a ~58kDa band of CROP.

Notable Publications

Author	Pubmed ID	Journal	Application
Emily M Schleicher	33137164	PLoS Genet	WB
Noah J Daniels	33852859	Cell Rep	WB
Wen Zheng	39491646	J Biol Chem	WB

Storage

Storage:

Store at -20°C. Stable for one year after shipment.

Storage Buffer:

PBS with 0.02% sodium azide and 50% glycerol pH 7.3.

Aliquoting is unnecessary for -20°C storage

*** 20ul sizes contain 0.1% BSA

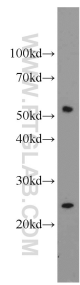
For technical support and original validation data for this product please contact:

T: 1 (888) 4PTGLAB (1-888-478-4522) (toll free in USA), or 1(312) 455-8498 (outside USA)

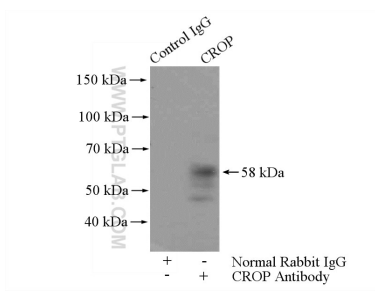
E: proteintech@ptglab.com
W: ptglab.com

This product is exclusively available under Proteintech Group brand and is not available to purchase from any other manufacturer.

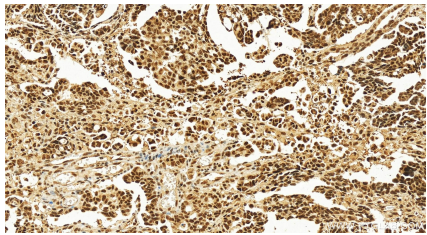
Selected Validation Data



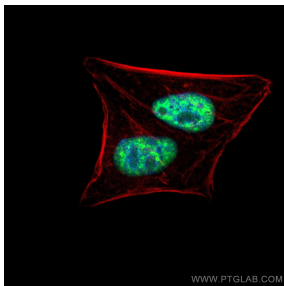
Jurkat cells were subjected to SDS PAGE followed by western blot with 14504-1-AP (CROP antibody) at dilution of 1:600 incubated at room temperature for 1.5 hours.



IP result of anti-CROP (IP:14504-1-AP, 4ug; Detection:14504-1-AP 1:500) with HepG2 cells lysate 3600ug.



Immunohistochemical analysis of paraffin-embedded human ovarian cancer slide using 14504-1-AP (CROP antibody) at dilution of 1:400 (under 20x lens). Heat mediated antigen retrieval with Tris-EDTA buffer (pH 9.0).



Immunofluorescent analysis of (4% PFA) fixed HepG2 cells using CROP antibody (14504-1-AP) at dilution of 1:200 and Multi-rAb Coralite ® Plus 488-Goat Anti-Rabbit Recombinant Secondary Antibody (H+L) (RGAR002), CL594-Phalloidin (red).