

For Research Use Only

# CROP Polyclonal antibody, PBS Only

Catalog Number: 14504-1-PBS

Featured Product



## Basic Information

### Catalog Number:

14504-1-PBS

### Size:

100ug, Concentration: 1 mg/ml by Nanodrop;

### Source:

Rabbit

### Isotype:

IgG

### Immunogen Catalog Number:

AG5961

### GenBank Accession Number:

BC056409

### GeneID (NCBI):

51747

### UNIPROT ID:

O95232

### Full Name:

cisplatin resistance-associated overexpressed protein

### Calculated MW:

51 kDa

### Observed MW:

55-58 kDa

### Purification Method:

Antigen affinity purification

## Applications

### Tested Applications:

WB, IHC, IF/ICC, IP, Indirect ELISA

### Species Specificity:

human, mouse

## Background Information

CROP, a putative SR protein, contain cystine/histidine motifs and leucine zipper-like repeats in the N-terminal half and consists mostly of charged and polar amino acids in the C-terminal half. CROP has a high expression in heart, brain, pancreas, thymus, and weak in lung, liver and kidney. As the human homologue of yeast Luc7p, CROP is supported to be participated in 5'-splice site recognize and is essential for vegetative growth. This is a rabbit polyclonal antibody raised against part of N-terminus of CROP of human origin, and can recognize a ~58kDa band of CROP.

## Storage

### Storage:

Store at -80°C.

### Storage Buffer:

PBS Only

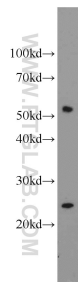
For technical support and original validation data for this product please contact:

T: 1 (888) 4PTGLAB (1-888-478-4522) (toll free in USA), or 1(312) 455-8498 (outside USA)

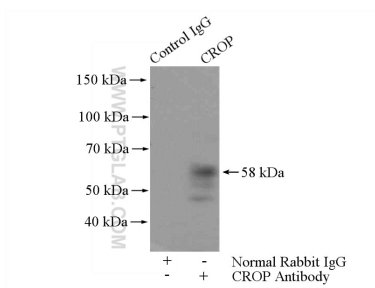
E: [proteintech@ptglab.com](mailto:proteintech@ptglab.com)  
W: [ptglab.com](http://ptglab.com)

This product is exclusively available under Proteintech Group brand and is not available to purchase from any other manufacturer.

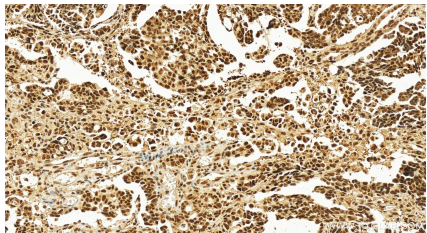
## Selected Validation Data



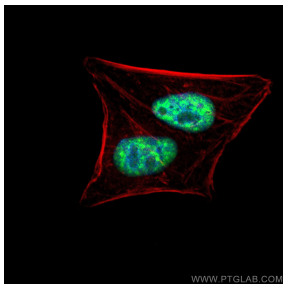
Jurkat cells were subjected to SDS PAGE followed by western blot with 14504-1-AP (CROP antibody) at dilution of 1:600 incubated at room temperature for 1.5 hours. This data was developed using the same antibody clone with 14504-1-PBS in a different storage buffer formulation.



IP result of anti-CROP (IP:14504-1-AP, 4ug; Detection:14504-1-AP 1:500) with HepG2 cells lysate 3600ug. This data was developed using the same antibody clone with 14504-1-PBS in a different storage buffer formulation.



Immunohistochemical analysis of paraffin-embedded human ovarian cancer slide using 14504-1-AP (CROP antibody) at dilution of 1:400 (under 20x lens). Heat mediated antigen retrieval with Tris-EDTA buffer (pH 9.0). This data was developed using the same antibody clone with 14504-1-PBS in a different storage buffer formulation.



Immunofluorescent analysis of (4% PFA) fixed HepG2 cells using CROP antibody (14504-1-AP) at dilution of 1:200 and Multi-rAb CoraLite ® Plus 488-Goat Anti-Rabbit Recombinant Secondary Antibody (H+L) (RGAR002), CL594-Phalloidin (red). This data was developed using the same antibody clone with 14504-1-PBS in a different storage buffer formulation.