

For Research Use Only

NR1D1 Polyclonal antibody, PBS Only

Catalog Number: 14506-1-PBS

Featured Product



Basic Information

Catalog Number:

14506-1-PBS

Size:

100ug, Concentration: 1 mg/ml by Nanodrop;

Source:

Rabbit

Isotype:

IgG

Immunogen Catalog Number:

AG5964

GenBank Accession Number:

BC056148

GeneID (NCBI):

9572

UNIPROT ID:

P20393

Full Name:

nuclear receptor subfamily 1, group D, member 1

Calculated MW:

67 kDa

Observed MW:

55-68 kDa

Purification Method:

Antigen affinity purification

Applications

Tested Applications:

WB, IF/ICC, Indirect ELISA

Species Specificity:

human, mouse

Background Information

NR1D1, also named EAR1, THRAL, ear-1, and hRev, contains one nuclear receptor DNA-binding domain and belongs to the nuclear hormone receptor family. NR1 subfamily. This protein functions as a constitutive transcriptional repressor. It is a possible receptor for triiodothyronine. BMAL1-CLOCK activates Rev-erba itself and thereby represents the link between the positive and negative loops of the circadian clock. This is a rabbit polyclonal antibody raised against the N terminus of human NR1D1.

Storage

Storage:

Store at -80°C.

Storage Buffer:

PBS Only

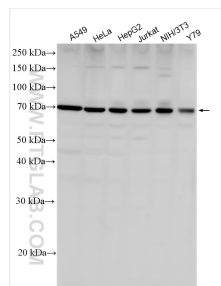
For technical support and original validation data for this product please contact:

T: 1 (888) 4PTGLAB (1-888-478-4522) (toll free in USA), or 1(312) 455-8498 (outside USA)

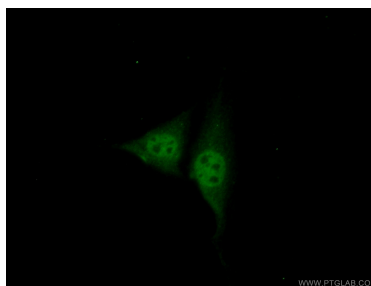
E: proteintech@ptglab.com
W: ptglab.com

This product is exclusively available under Proteintech Group brand and is not available to purchase from any other manufacturer.

Selected Validation Data



Various lysates were subjected to SDS PAGE followed by western blot with 14506-1-AP (NR1D1 antibody) at dilution of 1:2000 incubated at room temperature for 1.5 hours. This data was developed using the same antibody clone with 14506-1-PBS in a different storage buffer formulation.



Immunofluorescent analysis of (10% Formaldehyde) fixed NIH/3T3 cells using 14506-1-AP (NR1D1 antibody) at dilution of 1:50 and Alexa Fluor 488-conjugated AffiniPure Goat Anti-Rabbit IgG(H+L). This data was developed using the same antibody clone with 14506-1-PBS in a different storage buffer formulation.