

SREBF2 Polyclonal antibody

Catalog Number: 14508-1-AP

34 Publications

Basic Information

Catalog Number:

14508-1-AP

Size:

150ul, Concentration: 253 µg/ml by Bradford method using BSA as the standard;

Source:

Rabbit

Isotype:

IgG

Immunogen Catalog Number:

AG5967

GenBank Accession Number:

BC056158

GeneID (NCBI):

6721

Full Name:

sterol regulatory element binding transcription factor 2

Calculated MW:

124 kDa

Observed MW:

68 kDa

Purification Method:

Antigen affinity purification

Recommended Dilutions:

WB 1:500-1:2000

IP 0.5-4.0 µg for 1.0-3.0 mg of total protein lysate

IHC 1:50-1:500

Applications

Tested Applications:

IHC, IP, WB, ELISA

Cited Applications:

ChIP, IHC, WB

Species Specificity:

human, mouse, rat

Cited Species:

human, chicken, rat, mouse, Hamster

Note-IHC: suggested antigen retrieval with TE buffer pH 9.0; (*) Alternatively, antigen retrieval may be performed with citrate buffer pH 6.0

Positive Controls:

WB: Jurkat cells, mouse kidney tissue, HepG2 cells, human kidney tissue, HEK-293 cells, rat kidney tissue, HeLa cells, rat liver tissue

IP: HeLa cells,

IHC: mouse brain tissue, human kidney tissue, human liver cancer tissue

Background Information

SREBF2, also named as BHLHD2, is a 1141 amino acid protein, which contains 1 bHLH domain and belongs to the SREBP family. SREBF2 localizes in the endoplasmic reticulum membrane and is ubiquitously expressed in adult and fetal tissues. SREBF2 as a transcriptional activator is required for lipid homeostasis. SREBF2 expression is dynamically regulated in response to nutritional and hormonal cues.

Notable Publications

Author	Pubmed ID	Journal	Application
Dandan Wang	32913121	J Biol Chem	WB
Deshi Dong	25310017	Food Funct	WB
Xiaoke Wang	31668954	Environ Pollut	WB

Storage

Storage:

Store at -20°C. Stable for one year after shipment.

Storage Buffer:

PBS with 0.02% sodium azide and 50% glycerol pH 7.3.

Aliquoting is unnecessary for -20°C storage

*** 20ul sizes contain 0.1% BSA

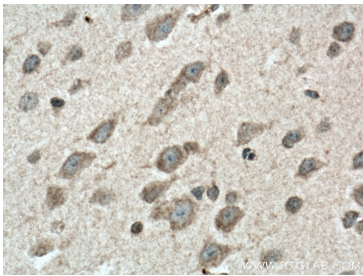
For technical support and original validation data for this product please contact:

T: 1 (888) 4PTGLAB (1-888-478-4522) (toll free in USA), or 1(312) 455-8498 (outside USA)

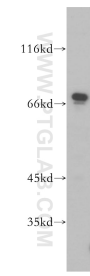
E: proteintech@ptglab.com
 W: ptglab.com

This product is exclusively available under Proteintech Group brand and is not available to purchase from any other manufacturer.

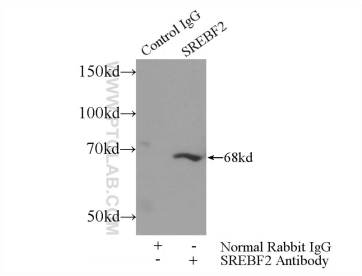
Selected Validation Data



Immunohistochemical analysis of paraffin-embedded mouse brain tissue slide using 14508-1-AP (SREBF2 antibody) at dilution of 1:200 (under 40x lens). Heat mediated antigen retrieval with Tris-EDTA buffer (pH 9.0).



Jurkat cells were subjected to SDS PAGE followed by western blot with 14508-1-AP (SREBF2 antibody) at dilution of 1:1000 incubated at room temperature for 1.5 hours.



IP Result of anti-SREBF2 (IP:14508-1-AP, 3ug; Detection:14508-1-AP 1:500) with HeLa cells lysate 3000ug.