

For Research Use Only

ENSA Polyclonal antibody

Catalog Number: 14518-1-AP



Basic Information

Catalog Number: 14518-1-AP	GenBank Accession Number: BC004461	Purification Method: Antigen affinity purification
Size: 150ul , Concentration: 1000 ug/ml by Nanodrop and 673 ug/ml by Bradford method using BSA as the standard;	GeneID (NCBI): 2029	Recommended Dilutions: WB 1:200-1:1000 IHC 1:50-1:200 IF/ICC 1:200-1:800
Source: Rabbit	UNIPROT ID: O43768	
Isotype: IgG	Full Name: endosulfine alpha	
Immunogen Catalog Number: AG5982	Calculated MW: 14 kDa	
	Observed MW: 19 kDa	

Applications

Tested Applications: WB, IHC, IF/ICC, ELISA	Positive Controls:
Species Specificity: human, mouse	WB : mouse brain tissue, COLO 320 cells, HeLa cells
Note-IHC: suggested antigen retrieval with TE buffer pH 9.0; (*) Alternatively, antigen retrieval may be performed with citrate buffer pH 6.0	IHC : human small intestine tissue, human colon tissue
	IF/ICC : HeLa cells,

Background Information

Endosulfine alpha (ENSA) belongs to the highly conserved c-AMP-regulated phosphoprotein (ARPP) family and was originally identified as an endogenous ligand for the sulfonylurea receptor, which regulates insulin secretion and glucose metabolism. ENSA not only regulates the cell cycle by interacting with microtubule-associated serine/threonine protein kinase-like (MASTL) enzymes, but also influences tumor growth through its own methylation. Recent studies have shown that ENSA is an important regulator of cholesterol biosynthesis in triple-negative breast cancer (TNBC) and that it triggers tumor growth by promoting cholesterol biosynthesis in TNBC.

Storage

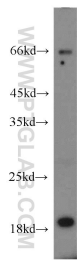
Storage:
Store at -20°C. Stable for one year after shipment.
Storage Buffer:
PBS with 0.02% sodium azide and 50% glycerol pH 7.3.
Aliquoting is unnecessary for -20°C storage

*** 20ul sizes contain 0.1% BSA

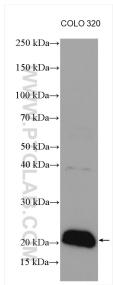
For technical support and original validation data for this product please contact:
T: 1 (888) 4PTGLAB (1-888-478-4522) (toll free in USA), or 1(312) 455-8498 (outside USA)
E: proteintech@ptglab.com
W: ptglab.com

This product is exclusively available under Proteintech Group brand and is not available to purchase from any other manufacturer.

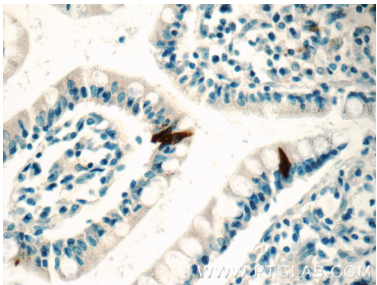
Selected Validation Data



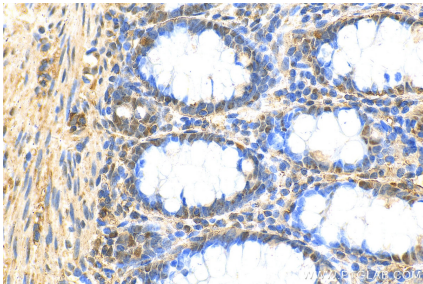
mouse brain tissue were subjected to SDS PAGE followed by western blot with 14518-1-AP (ENSA antibody) at dilution of 1:300 incubated at room temperature for 1.5 hours.



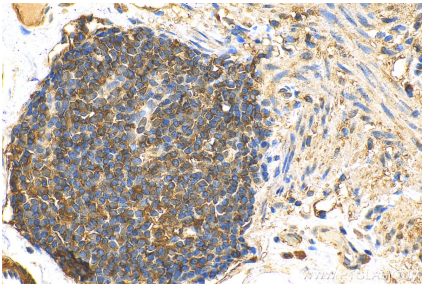
Various lysates were subjected to SDS PAGE followed by western blot with 14518-1-AP (ENSA antibody) at dilution of 1:3000 incubated at room temperature for 1.5 hours.



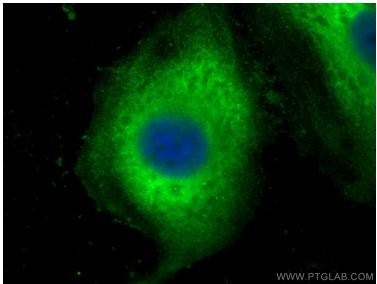
Immunohistochemical analysis of paraffin-embedded human small intestine tissue slide using 14518-1-AP (ENSA Antibody) at dilution of 1:50 (under 40x lens).



Immunohistochemical analysis of paraffin-embedded human colon tissue slide using 14518-1-AP (ENSA antibody) at dilution of 1:50 (under 40x lens). Heat mediated antigen retrieval with Tris-EDTA buffer (pH 9.0).



Immunohistochemical analysis of paraffin-embedded human colon tissue slide using 14518-1-AP (ENSA antibody) at dilution of 1:50 (under 40x lens). Heat mediated antigen retrieval with Tris-EDTA buffer (pH 9.0).



Immunofluorescent analysis of (-20°C Ethanol) fixed HeLa cells using ENSA antibody (14518-1-AP) at dilution of 1:400 and Multi-rAb CoraLite ® Plus 488-Goat Anti-Rabbit Recombinant Secondary Antibody (H+L) (RGAR002).