

For Research Use Only

# TCF7L1 Polyclonal antibody

Catalog Number: 14519-1-AP **11 Publications**



## Basic Information

<b>Catalog Number:</b> 14519-1-AP	<b>GenBank Accession Number:</b> BC058894	<b>Purification Method:</b> Antigen affinity purification
<b>Size:</b> 150ul , Concentration: 450 ug/ml by Nanodrop;	<b>GeneID (NCBI):</b> 83439	<b>Recommended Dilutions:</b> WB 1:500-1:1000 IHC 1:20-1:200 IF/ICC 1:200-1:800
<b>Source:</b> Rabbit	<b>UNIPROT ID:</b> Q9HCS4	
<b>Isotype:</b> IgG	<b>Full Name:</b> transcription factor 7-like 1 (T-cell specific, HMG-box)	
<b>Immunogen Catalog Number:</b> AG5983	<b>Calculated MW:</b> 63 kDa	
	<b>Observed MW:</b> 63-70 kDa	

## Applications

<b>Tested Applications:</b> WB, IHC, IF/ICC, ELISA	<b>Positive Controls:</b> WB : A431 cells, mouse brain tissue, JAR cells, mouse liver tissue, rat liver tissue IHC : human breast cancer tissue, IF/ICC : U2OS cells,
<b>Cited Applications:</b> WB, IHC, IF	
<b>Species Specificity:</b> human, mouse, rat	
<b>Cited Species:</b> human, mouse, rat, zebrafish	

**Note-IHC: suggested antigen retrieval with TE buffer pH 9.0; (\*) Alternatively, antigen retrieval may be performed with citrate buffer pH 6.0**

## Background Information

TCF7L1 is one of TCF/LEF transcription factors that are mediators of the Wnt signaling pathway and are antagonized by the TGF-beta signaling pathway. It binds to DNA and acts as a repressor in the absence of CTNNB1, and as an activator in its presence. It's necessary for the terminal differentiation of epidermal cells, the formation of keratohyalin granules and the development of the barrier function of the epidermis

## Notable Publications

Author	Pubmed ID	Journal	Application
Yu-Ching Wen	34799554	Oncogenesis	IHC
Kathleen Hübner	30451830	Nat Commun	IF
Zhi-yu Li	36302622	Korean J Physiol Pharmacol	WB

## Storage

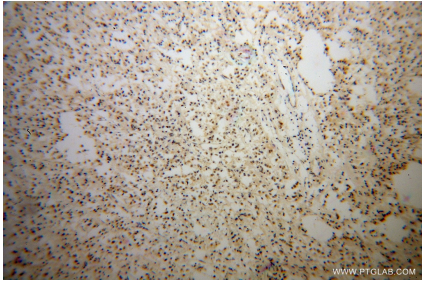
**Storage:**  
Store at -20°C. Stable for one year after shipment.  
**Storage Buffer:**  
PBS with 0.02% sodium azide and 50% glycerol, pH7.3  
Aliquoting is unnecessary for -20°C storage

\*\*\* 20ul sizes contain 0.1% BSA

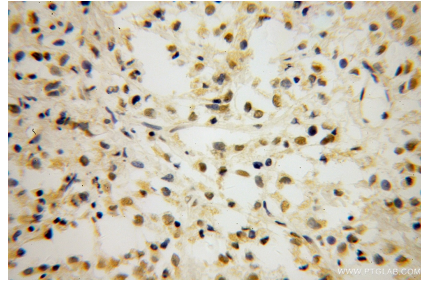
For technical support and original validation data for this product please contact:  
T: 1 (888) 4PTGLAB (1-888-478-4522) (toll free in USA), or 1(312) 455-8498 (outside USA)  
E: proteintech@ptglab.com  
W: ptglab.com

This product is exclusively available under Proteintech Group brand and is not available to purchase from any other manufacturer.

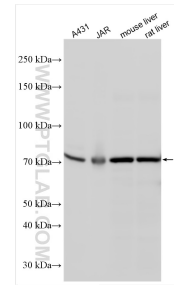
## Selected Validation Data



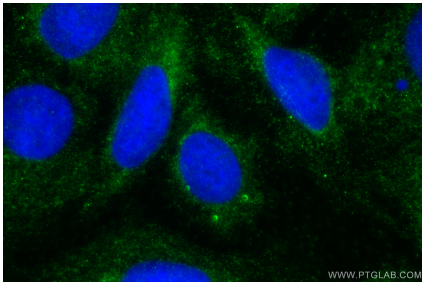
Immunohistochemical analysis of paraffin-embedded human breast cancer using 14519-1-AP (TCF7L1 antibody) at dilution of 1:100 (under 10x lens).



Immunohistochemical analysis of paraffin-embedded human breast cancer using 14519-1-AP (TCF7L1 antibody) at dilution of 1:100 (under 40x lens).



Various lysates were subjected to SDS PAGE followed by western blot with 14519-1-AP (TCF7L1 antibody) at dilution of 1:800 incubated at room temperature for 1.5 hours.



Immunofluorescent analysis of (-20°C Ethanol) fixed U2OS cells using TCF7L1 antibody (14519-1-AP) at dilution of 1:400 and CoraLite®488-Conjugated AffiniPure Goat Anti-Rabbit IgG(H+L) (SA00013-2).