

For Research Use Only

UBC12 Polyclonal antibody

Catalog Number: 14520-1-AP

Featured Product

10 Publications



Basic Information

Catalog Number:

14520-1-AP

Size:

150ul, Concentration: 900 ug/ml by Nanodrop and 360 ug/ml by Bradford method using BSA as the standard;

Source:

Rabbit

Isotype:

IgG

Immunogen Catalog Number:

AG5984

GenBank Accession Number:

BC058924

GeneID (NCBI):

9040

UNIPROT ID:

P61081

Full Name:

ubiquitin-conjugating enzyme E2M (UBC12 homolog, yeast)

Calculated MW:

21 kDa

Observed MW:

21 kDa

Purification Method:

Antigen affinity purification

Recommended Dilutions:

WB 1:500-1:2000

IP 0.5-4.0 ug for 1.0-3.0 mg of total protein lysate

IHC 1:50-1:500

IF/ICC 1:20-1:200

Applications

Tested Applications:

WB, IHC, IF/ICC, IP, ELISA

Cited Applications:

WB, IHC, IF

Species Specificity:

human, mouse, rat

Cited Species:

human, mouse

Note-IHC: suggested antigen retrieval with TE buffer pH 9.0; (*) Alternatively, antigen retrieval may be performed with citrate buffer pH 6.0

Positive Controls:

WB : HEK-293T cells, L02 cells, SMMC-7721 cells, HEK-293 cells, Ramos cells

IP : L02 cells,

IHC : mouse ovary tissue,

IF/ICC : L02 cells,

Notable Publications

Author	Pubmed ID	Journal	Application
Haibin Zhou	29074978	Nat Commun	WB,IF
Maria Fomicheva	33185187	Elife	WB
Wenjuan Zhou	35544948	Biochem Cell Biol	WB

Storage

Storage:

Store at -20°C. Stable for one year after shipment.

Storage Buffer:

PBS with 0.02% sodium azide and 50% glycerol pH 7.3.

Aliquoting is unnecessary for -20°C storage

*** 20ul sizes contain 0.1% BSA

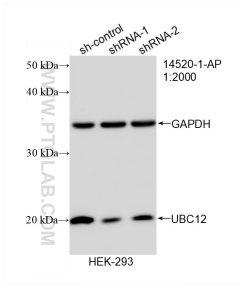
For technical support and original validation data for this product please contact:

T: 1 (888) 4PTGLAB (1-888-478-4522) (toll free in USA), or 1(312) 455-8498 (outside USA)

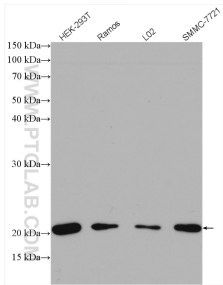
E: proteintech@ptglab.com
W: ptglab.com

This product is exclusively available under Proteintech Group brand and is not available to purchase from any other manufacturer.

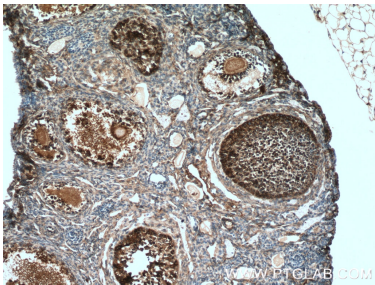
Selected Validation Data



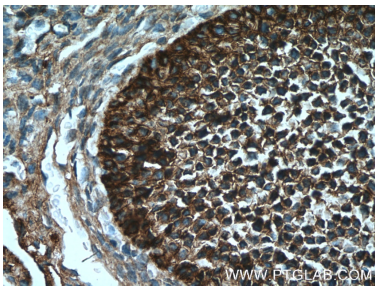
WB result of UBC12 antibody (14520-1-AP; 1:2000; incubated at room temperature for 1.5 hours) with sh-Control and sh-UBC12 transfected HEK-293 cells.



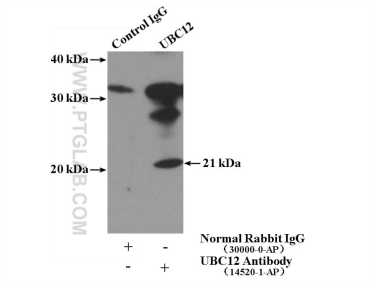
Various lysates were subjected to SDS PAGE followed by western blot with 14520-1-AP (UBC12 antibody) at dilution of 1:1000 incubated at room temperature for 1.5 hours.



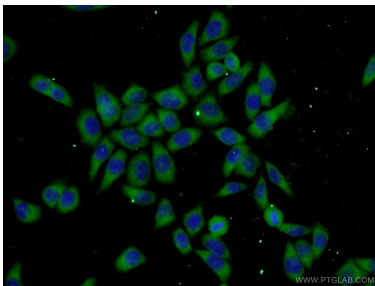
Immunohistochemical analysis of paraffin-embedded mouse ovary tissue slide using 14520-1-AP (UBC12 antibody) at dilution of 1:200 (under 10x lens. Heat mediated antigen retrieval with Tris-EDTA buffer (pH 9.0).



Immunohistochemical analysis of paraffin-embedded mouse ovary tissue slide using 14520-1-AP (UBC12 antibody) at dilution of 1:200 (under 40x lens. Heat mediated antigen retrieval with Tris-EDTA buffer (pH 9.0).



IP result of anti-UBC12 (IP:14520-1-AP, 4ug; Detection:14520-1-AP 1:600) with L02 cells lysate 1800ug.



Immunofluorescent analysis of L02 cells using 14520-1-AP (UBC12 antibody) at dilution of 1:50 and Alexa Fluor 488-conjugated AffiniPure Goat Anti-Rabbit IgG(H+L).