

For Research Use Only

CRMP2 Polyclonal antibody

Catalog Number: 14521-1-AP **1 Publications**



Basic Information

Catalog Number: 14521-1-AP	GenBank Accession Number: BC067109	Purification Method: Antigen affinity purification
Size: 150ul , Concentration: 400 µg/ml by Nanodrop;	GeneID (NCBI): 1808	Recommended Dilutions: WB 1:500-1:2000 IHC 1:100-1:400
Source: Rabbit	Full Name: dihydropyrimidinase-like 2	
Isotype: IgG	Calculated MW: 62 kDa	
Immunogen Catalog Number: AG5987	Observed MW: 62 kDa	

Applications

Tested Applications: IHC, WB, ELISA	Positive Controls:
Cited Applications: WB	WB : mouse brain tissue, human heart tissue, mouse heart tissue, rat heart tissue
Species Specificity: human, mouse, rat	IHC : human colon cancer tissue,
Cited Species: human	
Note-IHC: suggested antigen retrieval with TE buffer pH 9.0; (*) Alternatively, antigen retrieval may be performed with citrate buffer pH 6.0	

Background Information

Dihydropyrimidinase-like 2 (Dpysl2), a protein involved in neuronal differentiation and axonal guidance is found altered in various nervous system diseases (PMID:19524114). It is also named as CRMP2, ULIP2 and belongs to hydantoinase/dihydropyrimidinase subfamily. The phosphorylation of the particular portion carboxyl-terminal to the basic region of DPYSL2 may play an important role in regulating its activity, and may be involved in the formation of degenerating neurites in AD brain (PMID:10757975).

Notable Publications

Author	Pubmed ID	Journal	Application
Yi-Sheng Li	27127481	Neural Regen Res	WB

Storage

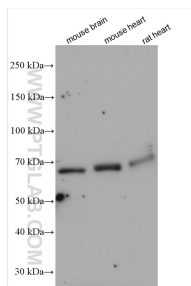
Storage:
Store at -20°C. Stable for one year after shipment.
Storage Buffer:
PBS with 0.02% sodium azide and 50% glycerol pH 7.3.
Aliquoting is unnecessary for -20°C storage

*** 20ul sizes contain 0.1% BSA

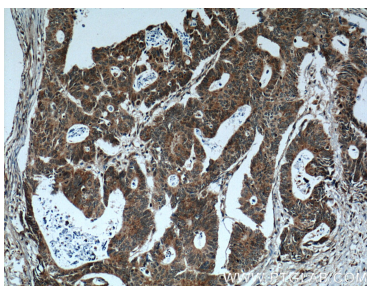
For technical support and original validation data for this product please contact:
T: 1 (888) 4PTGLAB (1-888-478-4522) (toll free in USA), or 1(312) 455-8498 (outside USA)
E: proteintech@ptglab.com
W: ptglab.com

This product is exclusively available under Proteintech Group brand and is not available to purchase from any other manufacturer.

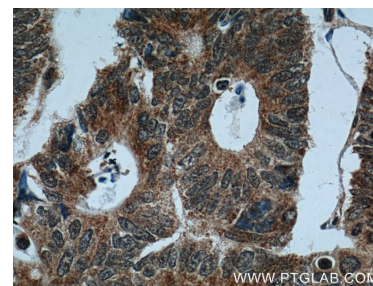
Selected Validation Data



Various lysates were subjected to SDS PAGE followed by western blot with 14521-1-AP (CRMP2 antibody) at dilution of 1:1000 incubated at room temperature for 1.5 hours.



Immunohistochemical analysis of paraffin-embedded human colon cancer tissue slide using 14521-1-AP (CRMP2 antibody at dilution of 1:200 (under 10x lens). Heat mediated antigen retrieval with Tris-EDTA buffer (pH 9.0).



Immunohistochemical analysis of paraffin-embedded human colon cancer tissue slide using 14521-1-AP (CRMP2 antibody at dilution of 1:200 (under 40x lens). Heat mediated antigen retrieval with Tris-EDTA buffer (pH 9.0).