

For Research Use Only

# MYBBP1A Polyclonal antibody, PBS Only

Catalog Number: 14524-1-PBS

Featured Product



## Basic Information

<b>Catalog Number:</b> 14524-1-PBS	<b>GenBank Accession Number:</b> BC050546	<b>Purification Method:</b> Antigen affinity purification
<b>Size:</b> 100ug, Concentration: 1 mg/ml by Nanodrop;	<b>GeneID (NCBI):</b> 10514	
<b>Source:</b> Rabbit	<b>UNIPROT ID:</b> Q9BQG0	
<b>Isotype:</b> IgG	<b>Full Name:</b> MYB binding protein (P160) 1a	
<b>Immunogen Catalog Number:</b> AG6008	<b>Calculated MW:</b> 149 kDa	
	<b>Observed MW:</b> 150-160 kDa	

## Applications

**Tested Applications:**  
WB, IHC, IF/ICC, IP, Indirect ELISA

**Species Specificity:**  
human

## Background Information

The protooncogene MYB is predominantly expressed in immature hemopoietic cells where it has an essential role in hemopoietic cell proliferation and differentiation. Oncogenically activated forms of MYB is generally N- and/or C-terminal truncations of the normal MYB protein. Removal of the C terminus of MYB disrupts or deletes a region termed the negative regulatory domain (NRD), resulting in an increase in DNA binding, transactivation, and transformation by MYB. One feature of the NRD is a leucine zipper-like motif [PMID: 8302594]. Murine Myb-binding protein-1a (MYBBP1A), originally called P160, was identified by its ability to interact specifically with Myb via this leucine zipper-like motif. MYBBP1A modulates MYB activity upon binding to the MYB NRD [PMID: 10644447, 9447996].

## Storage

**Storage:**  
Store at -80°C.

**Storage Buffer:**  
PBS only, pH7.3

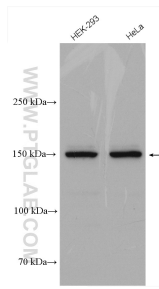
For technical support and original validation data for this product please contact:

T: 1 (888) 4PTGLAB (1-888-478-4522) (toll free in USA), or 1(312) 455-8498 (outside USA)

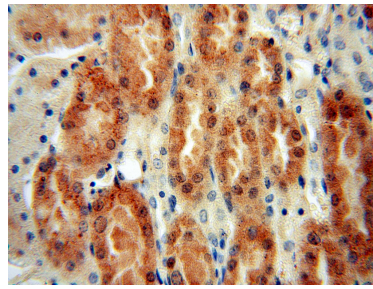
E: [proteintech@ptglab.com](mailto:proteintech@ptglab.com)  
W: [ptglab.com](http://ptglab.com)

This product is exclusively available under Proteintech Group brand and is not available to purchase from any other manufacturer.

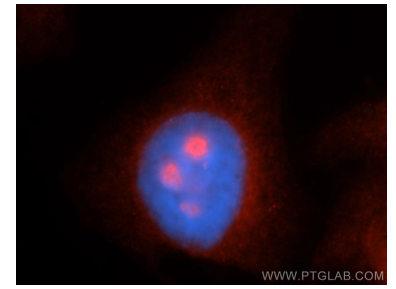
## Selected Validation Data



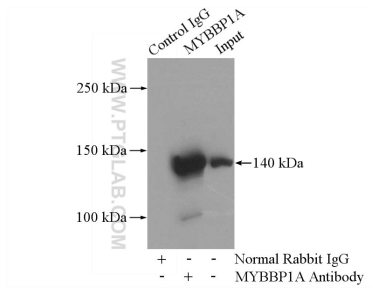
Various lysates were subjected to SDS PAGE followed by western blot with 14524-1-AP (MYBBP1A antibody) at dilution of 1:5000 incubated at room temperature for 1.5 hours. This data was developed using the same antibody clone with 14524-1-PBS in a different storage buffer formulation.



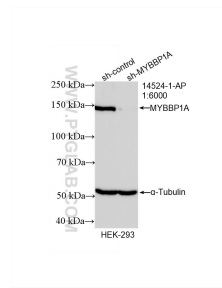
Immunohistochemical analysis of paraffin-embedded human kidney using 14524-1-AP (MYBBP1A antibody) at dilution of 1:100 (under 40x lens). This data was developed using the same antibody clone with 14524-1-PBS in a different storage buffer formulation.



Immunofluorescent analysis of HepG2 cells, using MYBBP1A antibody 14524-1-AP at 1:50 dilution and Rhodamine-labeled goat anti-rabbit IgG (red). Blue pseudocolor = DAPI (fluorescent DNA dye). This data was developed using the same antibody clone with 14524-1-PBS in a different storage buffer formulation.



IP result of anti-MYBBP1A (IP:14524-1-AP, 4ug; Detection:14524-1-AP 1:500) with HEK-293 cells lysate 2800ug. This data was developed using the same antibody clone with 14524-1-PBS in a different storage buffer formulation.



WB result of MYBBP1A antibody (14524-1-AP; 1:6000; incubated at room temperature for 1.5 hours) with sh-Control and sh-MYBBP1A transfected HEK-293 cells. This data was developed using the same antibody clone with 14524-1-PBS in a different storage buffer formulation.