

For Research Use Only

# RELT Polyclonal antibody

Catalog Number: 14532-1-AP



## Basic Information

Catalog Number:

14532-1-AP

Size:

150ul , Concentration: 400 ug/ml by Nanodrop and 247 ug/ml by Bradford method using BSA as the standard;

Source:

Rabbit

Isotype:

IgG

Immunogen Catalog Number:

AG6032

GenBank Accession Number:

BC051810

GeneID (NCBI):

84957

UNIPROT ID:

Q969Z4

Full Name:

RELT tumor necrosis factor receptor

Calculated MW:

46 kDa

Observed MW:

46 kDa

Purification Method:

Antigen affinity purification

Recommended Dilutions:

WB 1:1000-1:4000

## Applications

Tested Applications:

WB, ELISA

Species Specificity:

human

Positive Controls:

WB : Daudi cells, HeLa cells, HL-60 cells, Jurkat cells, Raji cells

## Storage

Storage:

Store at -20°C. Stable for one year after shipment.

Storage Buffer:

PBS with 0.02% sodium azide and 50% glycerol pH 7.3.

Aliquoting is unnecessary for -20°C storage

\*\*\* 20ul sizes contain 0.1% BSA

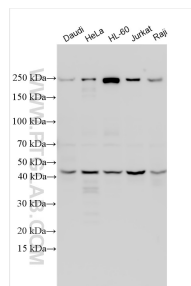
For technical support and original validation data for this product please contact:

T: 1 (888) 4PTGLAB (1-888-478-4522) (toll free in USA), or 1(312) 455-8498 (outside USA)

E: [proteintech@ptglab.com](mailto:proteintech@ptglab.com)  
W: [ptglab.com](http://ptglab.com)

This product is exclusively available under Proteintech Group brand and is not available to purchase from any other manufacturer.

## Selected Validation Data



Various lysates were subjected to SDS PAGE followed by western blot with 14532-1-AP (RELT antibody) at dilution of 1:2000 incubated at room temperature for 1.5 hours.