

For Research Use Only

LAMR1,RPSA Polyclonal antibody

Catalog Number: 14533-1-AP

Featured Product

11 Publications



Basic Information

Catalog Number: 14533-1-AP	GenBank Accession Number: BC050688	Purification Method: Antigen affinity purification
Size: 150ul , Concentration: 300 µg/ml by Nanodrop and 200 µg/ml by Bradford method using BSA as the standard;	GeneID (NCBI): 3921	Recommended Dilutions: WB 1:1000-1:4000 IF 1:200-1:800
Source: Rabbit	Full Name: ribosomal protein SA	
Isotype: IgG	Calculated MW: 33 kDa	
Immunogen Catalog Number: AG6033	Observed MW: 40 kDa	

Applications

Tested Applications:

FC, IF, WB, ELISA

Cited Applications:

IF, IHC, WB

Species Specificity:

human, mouse, rat

Cited Species:

human, mouse, pig

Positive Controls:

WB : COLO 320 cells, mouse liver tissue, mouse colon tissue, HeLa cells, NIH/3T3 cells, PC-12 cells

IF : HepG2 cells,

Background Information

The ribosomal protein SA (RPSA), previously named 67 kD laminin receptor(67LR), 37 kD laminin receptor precursor (37LRP) and p40 ribosome-associated protein, is a multifunctional protein, that plays a role in a number of pathological processes, such as cancer and prion diseases. It is overexpressed in various cancer cell lines, and the level of the laminin receptor transcript is higher in colon carcinoma tissue and lung cancer cell line than their normal counterparts. This antibody is a rabbit polyclonal antibody raised against full length RPSA of human origin. This antibody is specific to RPSA (LAMR1).67LR derives from homo- or hetero- dimerization of a 37 kDa cytosolic precursor (37LRP), most probably by fatty acid acylation. 37LRP is mostly found in the cytosol and nucleus [10] where it is involved in translational processes and maintenance of nuclear structures, respectively. 67LR is localized at the cell surface and it not only serves as a receptor for LM but also acts as a receptor for elastin, carbohydrates and the cellular prion protein.

Notable Publications

Author	Pubmed ID	Journal	Application
Turlo Kirsten A KA	23887637	Arterioscler Thromb Vasc Biol	WB
Lingli Sun	35302141	Food Funct	WB,IHC
Roberta Cagnetta	30008298	Neuron	IF

Storage

Storage:

Store at -20°C. Stable for one year after shipment.

Storage Buffer:

PBS with 0.02% sodium azide and 50% glycerol pH 7.3.

Aliquoting is unnecessary for -20°C storage

*** 20ul sizes contain 0.1% BSA

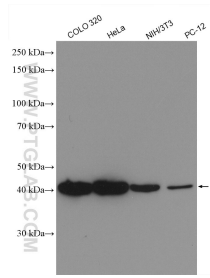
For technical support and original validation data for this product please contact:

T: 1 (888) 4PTGLAB (1-888-478-4522) (toll free in USA), or 1(312) 455-8498 (outside USA)

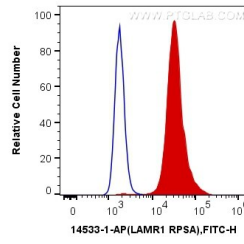
E: proteintech@ptglab.com
W: ptglab.com

This product is exclusively available under Proteintech Group brand and is not available to purchase from any other manufacturer.

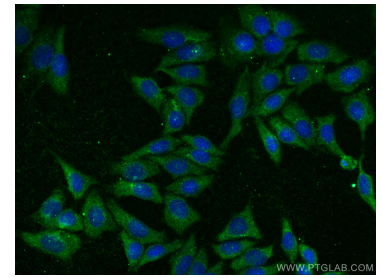
Selected Validation Data



Various lysates were subjected to SDS PAGE followed by western blot with 14533-1-AP (LAMR1,RPSA antibody) at dilution of 1:2000 incubated at room temperature for 1.5 hours.



1X10⁶ HeLa cells were intracellularly stained with 0.2 ug Anti-Human LAMR1,RPSA (14533-1-AP) and CoraLite®488-Conjugated AffiniPure Goat Anti-Rabbit IgG(H+L) at dilution 1:1000 (red), or 0.2 ug Control Antibody. Cells were fixed with 4% PFA and permeabilized with Flow Cytometry Perm Buffer (PF00011-C).



Immunofluorescent analysis of (-20°C Ethanol) fixed HepG2 cells using LAMR1,RPSA antibody (14533-1-AP) at dilution of 1:400 and CoraLite®488-Conjugated AffiniPure Goat Anti-Rabbit IgG(H+L).