

For Research Use Only

Hemoglobin Alpha Polyclonal antibody

Catalog Number: 14537-1-AP

Featured Product

11 Publications



Basic Information

Catalog Number:

14537-1-AP

Size:

150ul, Concentration: 400 ug/ml by Nanodrop;

Source:

Rabbit

Isotype:

IgG

Immunogen Catalog Number:

AG6040

GenBank Accession Number:

BC050661

GeneID (NCBI):

3039

UNIPROT ID:

P69905

Full Name:

hemoglobin, alpha 1

Calculated MW:

15 kDa

Observed MW:

14-16 kDa, 27 kDa

Purification Method:

Antigen affinity purification

Recommended Dilutions:

WB 1:2000-1:20000

IP 0.5-4.0 ug for 1.0-3.0 mg of total protein lysate

IF-P 1:50-1:500

Applications

Tested Applications:

WB, IF-P, IP, ELISA

Cited Applications:

WB, IHC, IF, IP

Species Specificity:

human, mouse, rat

Cited Species:

human, mouse, rat

Positive Controls:

WB: human placenta tissue, mouse heart tissue, mouse liver tissue, rat liver tissue

IP: mouse liver tissue,

IF-P: human appendicitis tissue, human placenta tissue

Background Information

The hemoglobin molecule is a tetramer consisting of two alpha- and two beta-globin-like chains. HBA1 (hemoglobin alpha chain) protein is a alpha-type chain of hemoglobin encoded by two independent genes (HBA1 and HBA2) whose coding sequences are identical. Two alpha chains coupled with two beta chains constitute the adult hemoglobin (HbA or $\alpha_2\beta_2$). HBA1 is also the component of fetal hemoglobin (HbF or $\alpha_2\gamma_2$). This antibody detects a major band around 14-16 kDa in the western blot analysis of heart tissue and K-562 cells. A higher band around 26-27 kDa can also be observed occasionally, which may represent the dimer form of HBA1 (PMID: 20836851). This antibody may cross-react with other hemoglobin chains.

Notable Publications

Author	Pubmed ID	Journal	Application
Yujiao Lu	35628182	Int J Mol Sci	WB, IHC
Guanheng Yang	24816238	Haematologica	WB
Jing Chen	32763160	Stem Cell Reports	WB

Storage

Storage:

Store at -20°C. Stable for one year after shipment.

Storage Buffer:

PBS with 0.02% sodium azide and 50% glycerol pH 7.3.

Aliquoting is unnecessary for -20°C storage

*** 20ul sizes contain 0.1% BSA

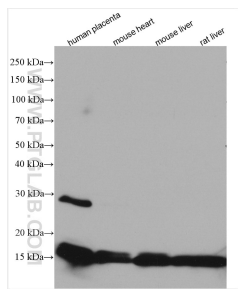
For technical support and original validation data for this product please contact:

T: 1 (888) 4PTGLAB (1-888-478-4522) (toll free in USA), or 1(312) 455-8498 (outside USA)

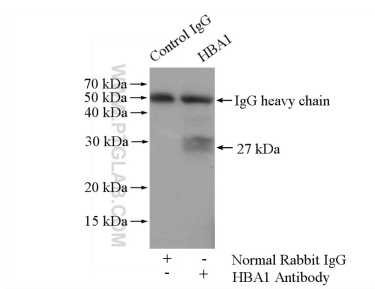
E: proteintech@ptglab.com
W: ptglab.com

This product is exclusively available under Proteintech Group brand and is not available to purchase from any other manufacturer.

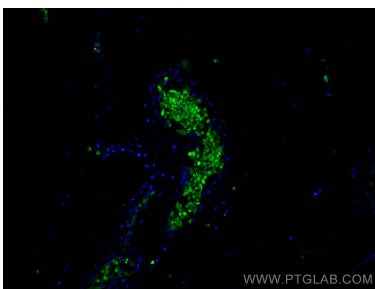
Selected Validation Data



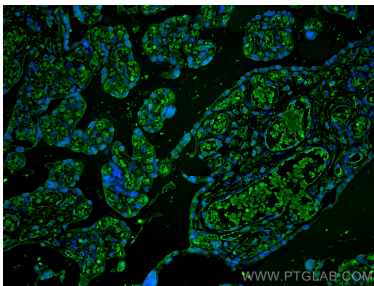
Various lysates were subjected to SDS PAGE followed by western blot with 14537-1-AP (Hemoglobin Alpha antibody) at dilution of 1:10000 incubated at room temperature for 1.5 hours.



IP result of anti-Hemoglobin Alpha (IP:14537-1-AP, 4ug; Detection:14537-1-AP 1:500) with mouse liver tissue lysate 4000ug.



Immunofluorescent analysis of (4% PFA) fixed human appendicitis tissue using Hemoglobin Alpha antibody (14537-1-AP) at dilution of 1:200 and Coralite®488-Conjugated AffiniPure Goat Anti-Rabbit IgG(H+L).



Immunofluorescent analysis of (4% PFA) fixed paraffin-embedded human placenta tissue using Hemoglobin Alpha antibody (14537-1-AP) at dilution of 1:200 and Coralite®488-Conjugated AffiniPure Goat Anti-Rabbit IgG(H+L) (SA00013-2). Heat mediated antigen retrieval with Tris-EDTA buffer (pH 9.0).