

For Research Use Only

Hemoglobin Alpha Polyclonal antibody, PBS Only



Catalog Number: 14537-1-PBS

Featured Product

Basic Information

Catalog Number:

14537-1-PBS

Size:

100ug , Concentration: 1 mg/ml by
Nanodrop;

Source:

Rabbit

Isotype:

IgG

Immunogen Catalog Number:

AG6040

GenBank Accession Number:

BC050661

GeneID (NCBI):

3039

UNIPROT ID:

P69905

Full Name:

hemoglobin, alpha 1

Calculated MW:

15 kDa

Observed MW:

14-16 kDa, 27 kDa

Purification Method:

Antigen affinity purification

Applications

Tested Applications:

WB, IF-P, IP, ELISA

Species Specificity:

human, mouse, rat

Background Information

The hemoglobin molecule is a tetramer consisting of two alpha- and two beta-globin-like chains. HBA1 (hemoglobin alpha chain) protein is a alpha-type chain of hemoglobin encoded by two independent genes (HBA1 and HBA2) whose coding sequences are identical. Two alpha chains coupled with two beta chains constitute the adult hemoglobin (HbA or $\alpha_2\beta_2$). HBA1 is also the component of fetal hemoglobin (HbF or $\alpha_2\gamma_2$). This antibody detects a major band around 14-16 kDa in the western blot analysis of heart tissue and K-562 cells. A higher band around 26-27 kDa can also be observed occasionally, which may represent the dimer form of HBA1 (PMID: 20836851). This antibody may cross-react with other hemoglobin chains.

Storage

Storage:

Store at -80°C.

Storage Buffer:

PBS only, pH7.3

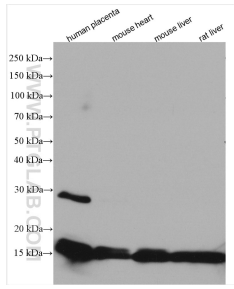
For technical support and original validation data for this product please contact:

T: 1 (888) 4PTGLAB (1-888-478-4522) (toll free
in USA), or 1(312) 455-8498 (outside USA)

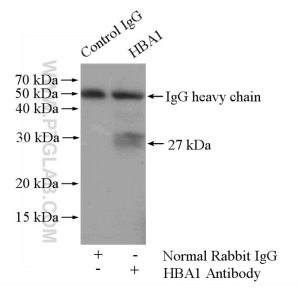
E: proteintech@ptglab.com
W: ptglab.com

This product is exclusively available under Proteintech Group brand and is not available to purchase from any other manufacturer.

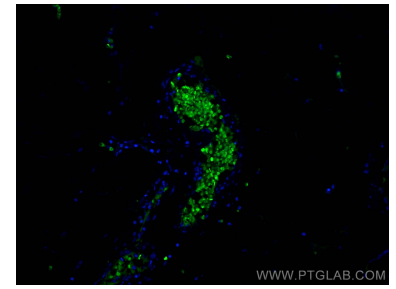
Selected Validation Data



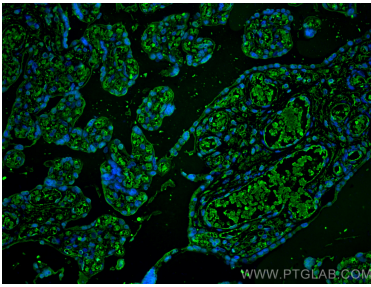
Various lysates were subjected to SDS PAGE followed by western blot with 14537-1-AP (Hemoglobin Alpha antibody) at dilution of 1:10000 incubated at room temperature for 1.5 hours. This data was developed using the same antibody clone with 14537-1-PBS in a different storage buffer formulation.



IP result of anti-Hemoglobin Alpha (IP:14537-1-AP, 4ug; Detection:14537-1-AP 1:500) with mouse liver tissue lysate 4000ug. This data was developed using the same antibody clone with 14537-1-PBS in a different storage buffer formulation.



Immunofluorescent analysis of (4% PFA) fixed human appendicitis tissue using Hemoglobin Alpha antibody (14537-1-AP) at dilution of 1:200 and CoraLite®488-Conjugated AffiniPure Goat Anti-Rabbit IgG(H+L). This data was developed using the same antibody clone with 14537-1-PBS in a different storage buffer formulation.



Immunofluorescent analysis of (4% PFA) fixed paraffin-embedded human placenta tissue using Hemoglobin Alpha antibody (14537-1-AP) at dilution of 1:200 and CoraLite®488-Conjugated Goat Anti-Rabbit IgG(H+L) (SA00013-2). Heat mediated antigen retrieval with Tris-EDTA buffer (pH 9.0). This data was developed using the same antibody clone with 14537-1-PBS in a different storage buffer formulation.