

For Research Use Only

MLL5 Polyclonal antibody

Catalog Number: 14540-1-AP **1 Publications**



Basic Information

Catalog Number: 14540-1-AP	GenBank Accession Number: BC062583	Purification Method: Antigen affinity purification
Size: 150ul , Concentration: 450 µg/ml by Nanodrop and 273 µg/ml by Bradford method using BSA as the standard;	GeneID (NCBI): 55904	Recommended Dilutions: WB 1:500-1:3000 IHC 1:500-1:2000 IF 1:50-1:500
Source: Rabbit	UNIPROT ID: Q8IZD2	
Isotype: IgG	Full Name: myeloid/Lymphoid or mixed-Lineage leukemia 5 (trithorax homolog, Drosophila)	
Immunogen Catalog Number: AG6044	Calculated MW: 205 kDa	
	Observed MW: 100 kDa, 70 kDa	

Applications

Tested Applications: WB, IF, IHC, ELISA	Positive Controls: WB : K-562 cells, HL-60 cells, Raji cells, mouse retina tissue
Cited Applications: IF	IHC : human pancreas cancer tissue,
Species Specificity: human, mouse	IF : K-562 cells,
Cited Species: human	

Note-IHC: suggested antigen retrieval with TE buffer pH 9.0; (*) Alternatively, antigen retrieval may be performed with citrate buffer pH 6.0

Notable Publications

Author	Pubmed ID	Journal	Application
Hailian Zhao	38128540	Mol Cell	IF

Storage

Storage:
Store at -20°C. Stable for one year after shipment.

Storage Buffer:
PBS with 0.02% sodium azide and 50% glycerol pH 7.3.

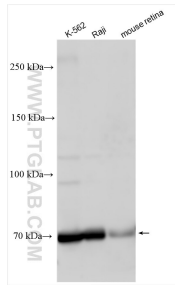
Aliquoting is unnecessary for -20°C storage

*** 20ul sizes contain 0.1% BSA

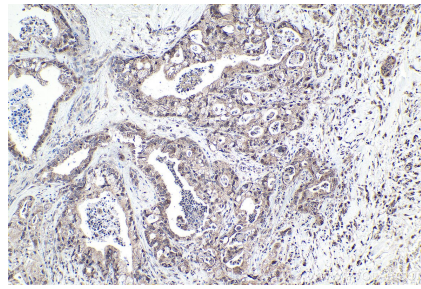
For technical support and original validation data for this product please contact:
T: 1 (888) 4PTGLAB (1-888-478-4522) (toll free in USA), or 1(312) 455-8498 (outside USA) E: proteintech@ptglab.com W: ptglab.com

This product is exclusively available under Proteintech Group brand and is not available to purchase from any other manufacturer.

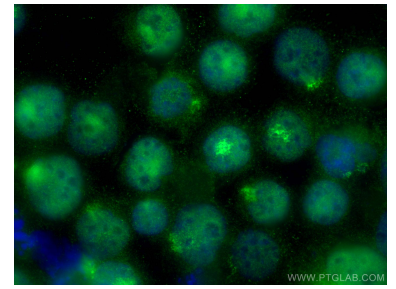
Selected Validation Data



Various lysates were subjected to SDS PAGE followed by western blot with 14540-1-AP (MLL5 antibody) at dilution of 1:1500 incubated at room temperature for 1.5 hours.



Immunohistochemical analysis of paraffin-embedded human pancreas cancer tissue slide using 14540-1-AP (MLL5 antibody) at dilution of 1:1000 (under 10x lens). Heat mediated antigen retrieval with Tris-EDTA buffer (pH 9.0).



Immunofluorescent analysis of (4% PFA) fixed K-562 cells using MLL5 antibody (14540-1-AP) at dilution of 1:200 and CoraLite®488-Conjugated AffiniPure Goat Anti-Rabbit IgG(H+L) (SA00013-2).