

For Research Use Only

RBP7 Polyclonal antibody

Catalog Number: 14541-1-AP



Basic Information

Catalog Number: 14541-1-AP	GenBank Accession Number: BC063013	Purification Method: Antigen affinity purification
Size: 150ul , Concentration: 450 µg/ml by Nanodrop and 233 µg/ml by Bradford method using BSA as the standard;	GeneID (NCBI): 116362	Recommended Dilutions: WB 1:500-1:2000 IP 0.5-4.0 ug for IP and 1:500-1:1000 for WB
Source: Rabbit	Full Name: retinol binding protein 7, cellular	IHC 1:20-1:200
Isotype: IgG	Calculated MW: 15.5 kDa	IF 1:20-1:200
Immunogen Catalog Number: AG6045	Observed MW: 15-18 kDa	

Applications

Tested Applications:
IF, IHC, IP, WB, ELISA

Species Specificity:
human, mouse

Note-IHC: suggested antigen retrieval with TE buffer pH 9.0; (*) Alternatively, antigen retrieval may be performed with citrate buffer pH 6.0

Positive Controls:

WB : HEK-293 cells, mouse adipose tissue

IP : HEK-293 cells,

IHC : human colon cancer tissue, human kidney tissue

IF : HEK-293 cells, human colon cancer tissue, human kidney tissue

Background Information

Storage

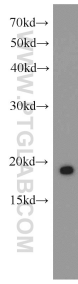
Storage:
Store at -20°C. Stable for one year after shipment.
Storage Buffer:
PBS with 0.02% sodium azide and 50% glycerol pH 7.3.
Aliquoting is unnecessary for -20°C storage

*** 20ul sizes contain 0.1% BSA

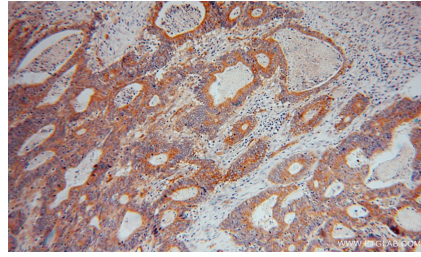
For technical support and original validation data for this product please contact:
T: 1 (888) 4PTGLAB (1-888-478-4522) (toll free in USA), or 1(312) 455-8498 (outside USA) E: proteintech@ptglab.com W: ptglab.com

This product is exclusively available under Proteintech Group brand and is not available to purchase from any other manufacturer.

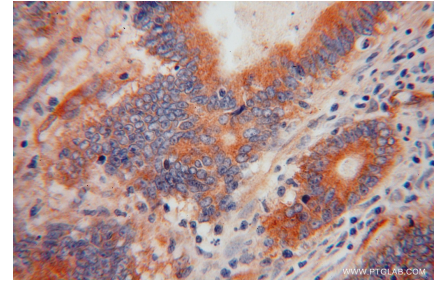
Selected Validation Data



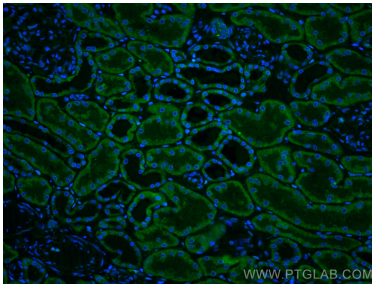
HEK-293 cells were subjected to SDS PAGE followed by western blot with 14541-1-AP (RBP7 antibody) at dilution of 1:1000 incubated at room temperature for 1.5 hours.



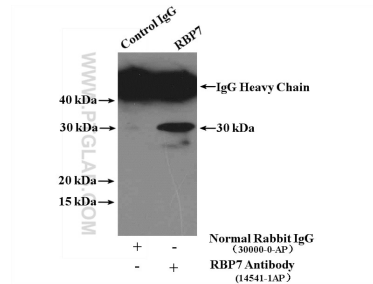
Immunohistochemical analysis of paraffin-embedded human colon cancer using 14541-1-AP (RBP7 antibody) at dilution of 1:50 (under 10x lens).



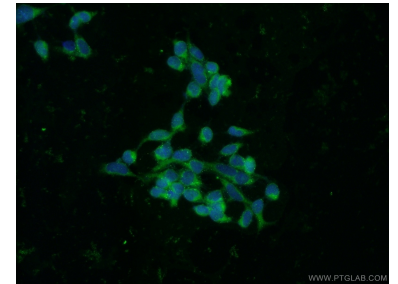
Immunohistochemical analysis of paraffin-embedded human colon cancer using 14541-1-AP (RBP7 antibody) at dilution of 1:50 (under 40x lens).



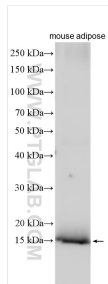
Immunofluorescent analysis of (4% PFA) fixed human kidney tissue using RBP7 antibody (14541-1-AP) at dilution of 1:200 and CoraLite®488-Conjugated AffiniPure Goat Anti-Rabbit IgG(H+L).



IP Result of anti-RBP7 (IP:14541-1-AP, 4ug; Detection:14541-1-AP 1:500) with HEK-293 cells lysate 3000ug.



Immunofluorescent analysis of HEK-293 cells using 14541-1-AP (RBP7 antibody) at dilution of 1:50 and Alexa Fluor 488-conjugated AffiniPure Goat Anti-Rabbit IgG(H+L).



mouse adipose tissue were subjected to SDS PAGE followed by western blot with 14541-1-AP (RBP7 antibody) at dilution of 1:500 incubated at room temperature for 1.5 hours.