

For Research Use Only

# RBP7 Polyclonal antibody, PBS Only

Catalog Number:14541-1-PBS



## Basic Information

<b>Catalog Number:</b> 14541-1-PBS	<b>GenBank Accession Number:</b> BC063013	<b>Purification Method:</b> Antigen affinity purification
<b>Size:</b> 100ug , Concentration: 1 mg/ml by Nanodrop;	<b>GeneID (NCBI):</b> 116362	
<b>Source:</b> Rabbit	<b>UNIPROT ID:</b> Q96R05	
<b>Isotype:</b> IgG	<b>Full Name:</b> retinol binding protein 7, cellular	
<b>Immunogen Catalog Number:</b> AG6045	<b>Calculated MW:</b> 15.5 kDa	
	<b>Observed MW:</b> 15-18 kDa	

## Applications

**Tested Applications:**  
WB, IHC, IF/ICC, IF-P, IP, Indirect ELISA

**Species Specificity:**  
human, mouse

## Storage

**Storage:**  
Store at -80°C.

**Storage Buffer:**  
PBS Only

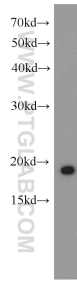
For technical support and original validation data for this product please contact:

T: 1 (888) 4PTGLAB (1-888-478-4522) (toll free in USA), or 1(312) 455-8498 (outside USA)

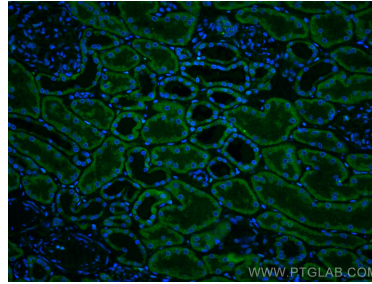
E: [proteintech@ptglab.com](mailto:proteintech@ptglab.com)  
W: [ptglab.com](http://ptglab.com)

This product is exclusively available under Proteintech Group brand and is not available to purchase from any other manufacturer.

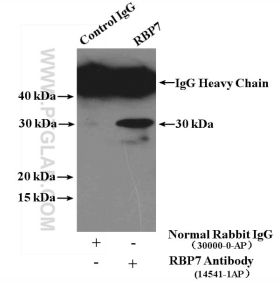
## Selected Validation Data



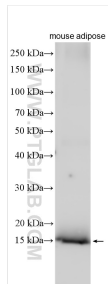
HEK-293 cells were subjected to SDS PAGE followed by western blot with 14541-1-AP (RBP7 antibody) at dilution of 1:1000 incubated at room temperature for 1.5 hours. This data was developed using the same antibody clone with 14541-1-PBS in a different storage buffer formulation.



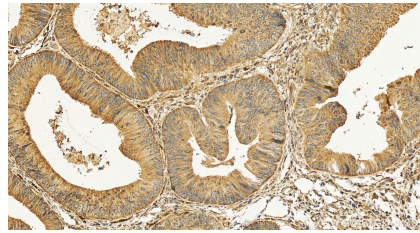
Immunofluorescent analysis of (4% PFA) fixed human kidney tissue using RBP7 antibody (14541-1-AP) at dilution of 1:200 and CoraLite®488-Conjugated AffiniPure Goat Anti-Rabbit IgG(H+L). This data was developed using the same antibody clone with 14541-1-PBS in a different storage buffer formulation.



IP result of anti-RBP7 (IP:14541-1-AP, 4ug; Detection:14541-1-AP 1:500) with HEK-293 cells lysate 3000ug. This data was developed using the same antibody clone with 14541-1-PBS in a different storage buffer formulation.



mouse adipose tissue were subjected to SDS PAGE followed by western blot with 14541-1-AP (RBP7 antibody) at dilution of 1:500 incubated at room temperature for 1.5 hours. This data was developed using the same antibody clone with 14541-1-PBS in a different storage buffer formulation.



Immunohistochemical analysis of paraffin-embedded human colon cancer tissue slide using 14541-1-AP (RBP7 antibody) at dilution of 1:400 (under 20x lens). Heat mediated antigen retrieval with Tris-EDTA buffer (pH 9.0). This data was developed using the same antibody clone with 14541-1-PBS in a different storage buffer formulation.

Immunofluorescent analysis of (4% PFA) fixed HEK-293 cells using RBP7 antibody (14541-1-AP) at dilution of 1:200 and CoraLite®488-Conjugated AffiniPure Goat Anti-Rabbit IgG(H+L). This data was developed using the same antibody clone with 14541-1-PBS in a different storage buffer formulation.