

For Research Use Only

# CLIC1 Polyclonal antibody

Catalog Number: 14545-1-AP

Featured Product

8 Publications



## Basic Information

**Catalog Number:**  
14545-1-AP

**Size:**  
150ul, Concentration: 550 µg/ml by Nanodrop and 253 µg/ml by Bradford method using BSA as the standard;

**Source:**  
Rabbit

**Isotype:**  
IgG

**Immunogen Catalog Number:**  
AG6049

**GenBank Accession Number:**  
BC064527

**GeneID (NCBI):**  
1192

**Full Name:**  
chloride intracellular channel 1

**Calculated MW:**  
27 kDa

**Observed MW:**  
27-32 kDa

**Purification Method:**  
Antigen affinity purification

**Recommended Dilutions:**  
WB 1:500-1:1000  
IP 0.5-4.0 ug for IP and 1:200-1:1000 for WB  
IHC 1:20-1:200  
IF 1:20-1:200

## Applications

**Tested Applications:**  
IF, IHC, IP, WB, ELISA

**Cited Applications:**  
IF, IHC, WB

**Species Specificity:**  
human, mouse, rat

**Cited Species:**  
human, rat, mouse

**Note-IHC: suggested antigen retrieval with TE buffer pH 9.0; (\*) Alternatively, antigen retrieval may be performed with citrate buffer pH 6.0**

**Positive Controls:**

**WB:** HL-60 cells, HeLa cells

**IP:** HeLa cells,

**IHC:** human small intestine tissue, human colon tissue, human pancreas tissue

**IF:** HepG2 cells, HeLa cells

## Background Information

### Notable Publications

Author	Pubmed ID	Journal	Application
Jinwen Xia	36081926	Breast Cancer (Dove Med Press)	WB,IHC
Huiwu Geng	36252281	Transl Oncol	WB
Xuyong Wei	35722791	Technol Cancer Res Treat	WB,IHC

## Storage

**Storage:**

Store at -20°C. Stable for one year after shipment.

**Storage Buffer:**

PBS with 0.02% sodium azide and 50% glycerol pH 7.3.

Aliquoting is unnecessary for -20°C storage

\*\*\* 20ul sizes contain 0.1% BSA

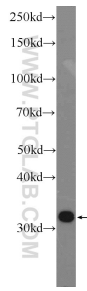
For technical support and original validation data for this product please contact:

T: 1 (888) 4PTGLAB (1-888-478-4522) (toll free in USA), or 1(312) 455-8498 (outside USA)

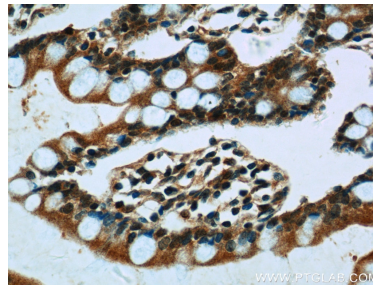
E: proteintech@ptglab.com  
W: ptglab.com

This product is exclusively available under Proteintech Group brand and is not available to purchase from any other manufacturer.

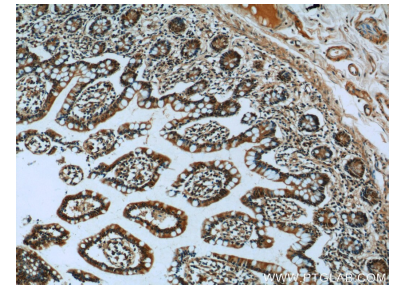
## Selected Validation Data



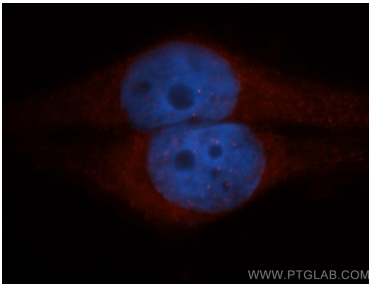
HL-60 cells were subjected to SDS PAGE followed by western blot with 14545-1-AP (CLIC1 Antibody) at dilution of 1:600 incubated at room temperature for 1.5 hours.



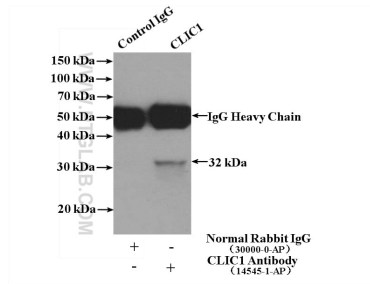
Immunohistochemical analysis of paraffin-embedded human small intestine tissue slide using 14545-1-AP (CLIC1 Antibody) at dilution of 1:50 (under 40x lens).



Immunohistochemical analysis of paraffin-embedded human small intestine tissue slide using 14545-1-AP (CLIC1 Antibody) at dilution of 1:50 (under 10x lens).



Immunofluorescent analysis of HepG2 cells, using CLIC1 antibody 14545-1-AP at 1:50 dilution and Rhodamine-labeled goat anti-rabbit IgG (red). Blue pseudocolor = DAPI (fluorescent DNA dye).



IP Result of anti-CLIC1 (IP:14545-1-AP, 4ug; Detection:14545-1-AP 1:300) with HeLa cells lysate 1200ug.