

For Research Use Only

# LDHC Polyclonal antibody

Catalog Number: 14546-1-AP



## Basic Information

<b>Catalog Number:</b> 14546-1-AP	<b>GenBank Accession Number:</b> BC064388	<b>Purification Method:</b> Antigen affinity purification
<b>Size:</b> 150ul , Concentration: 140 µg/ml by Nanodrop;	<b>GeneID (NCBI):</b> 3948	<b>Recommended Dilutions:</b> WB 1:500-1:2000 IHC 1:50-1:500
<b>Source:</b> Rabbit	<b>Full Name:</b> lactate dehydrogenase C	
<b>Isotype:</b> IgG	<b>Calculated MW:</b> 36 kDa	
<b>Immunogen Catalog Number:</b> AG6050	<b>Observed MW:</b> 31-35 kDa	

## Applications

<b>Tested Applications:</b> IHC, WB, ELISA	<b>Positive Controls:</b>
<b>Species Specificity:</b> human, mouse, rat	<b>WB :</b> HeLa cells, PC-3 cells, mouse testis tissue, rat testis tissue
<b>Note-IHC: suggested antigen retrieval with TE buffer pH 9.0; (*) Alternatively, antigen retrieval may be performed with citrate buffer pH 6.0</b>	<b>IHC :</b> mouse testis tissue,

## Background Information

LDHC, also named as CT32 and LDH-X, belongs to the LDH/MDH superfamily and LDH family. LDHC is a possible role in sperm motility. LDHC catalyzes the reaction: (S)-lactate + NAD<sup>+</sup> = pyruvate + NADH. LDHC is a testis-specific isoform. Abnormal LDHC expression is associated with several forms of cancer. The antibody has no cross reaction with LDHA and LDHB.

## Storage

**Storage:**  
Store at -20°C. Stable for one year after shipment.  
**Storage Buffer:**  
PBS with 0.02% sodium azide and 50% glycerol pH 7.3.  
Aliquoting is unnecessary for -20°C storage

\*\*\* 20ul sizes contain 0.1% BSA

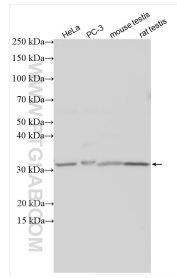
For technical support and original validation data for this product please contact:

T: 1 (888) 4PTGLAB (1-888-478-4522) (toll free in USA), or 1(312) 455-8498 (outside USA)

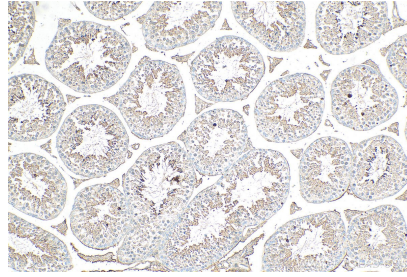
E: [proteintech@ptglab.com](mailto:proteintech@ptglab.com)  
W: [ptglab.com](http://ptglab.com)

This product is exclusively available under Proteintech Group brand and is not available to purchase from any other manufacturer.

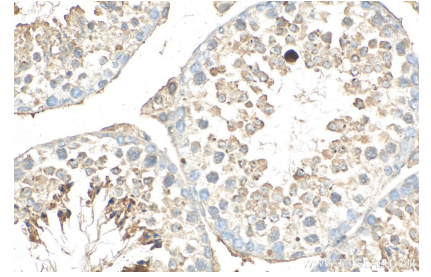
## Selected Validation Data



Various lysates were subjected to SDS PAGE followed by western blot with 14546-1-AP (LDHC antibody) at dilution of 1:1000 incubated at room temperature for 1.5 hours.



Immunohistochemical analysis of paraffin-embedded mouse testis tissue slide using 14546-1-AP (LDHC antibody) at dilution of 1:200 (under 10x lens). Heat mediated antigen retrieval with Tris-EDTA buffer (pH 9.0).



Immunohistochemical analysis of paraffin-embedded mouse testis tissue slide using 14546-1-AP (LDHC antibody) at dilution of 1:200 (under 40x lens). Heat mediated antigen retrieval with Tris-EDTA buffer (pH 9.0).