

For Research Use Only

ARFIP2 Polyclonal antibody

Catalog Number: 14548-1-AP

2 Publications



Basic Information

Catalog Number:

14548-1-AP

Size:

150ul, Concentration: 400 ug/ml by Nanodrop and 353 ug/ml by Bradford method using BSA as the standard;

Source:

Rabbit

Isotype:

IgG

Immunogen Catalog Number:

AG6076

GenBank Accession Number:

BC000392

GeneID (NCBI):

23647

UNIPROT ID:

P53365

Full Name:

ADP-ribosylation factor interacting protein 2

Calculated MW:

38 kDa

Observed MW:

38 kDa, 45 kDa

Purification Method:

Antigen affinity purification

Recommended Dilutions:

WB 1:1000-1:4000

IHC 1:20-1:200

IF/ICC 1:10-1:100

Applications

Tested Applications:

WB, IHC, IF/ICC, ELISA

Cited Applications:

WB, IHC, IF

Species Specificity:

human, mouse, rat

Cited Species:

human, mouse

Note-IHC: suggested antigen retrieval with TE buffer pH 9.0; (*) Alternatively, antigen retrieval may be performed with citrate buffer pH 6.0

Positive Controls:

WB: HeLa cells, human brain tissue, human heart tissue, human liver tissue, mouse pancreas tissue

IHC: human liver tissue, human pancreas tissue

IF/ICC: HeLa cells, HepG2 cells

Notable Publications

Author	Pubmed ID	Journal	Application
Kaida Huang	36573219	J Hepatocell Carcinoma	IHC, WB, IF
Fenfeng Jiang	38302034	Cell Signal	WB

Storage

Storage:

Store at -20°C. Stable for one year after shipment.

Storage Buffer:

PBS with 0.02% sodium azide and 50% glycerol pH 7.3.

Aliquoting is unnecessary for -20°C storage

*** 20ul sizes contain 0.1% BSA

For technical support and original validation data for this product please contact:

T: 1 (888) 4PTGLAB (1-888-478-4522) (toll free in USA), or 1(312) 455-8498 (outside USA)

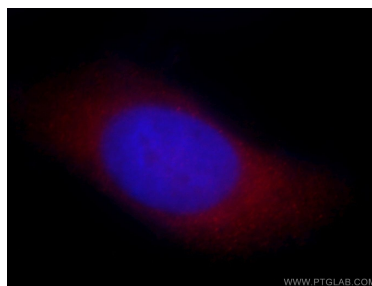
E: proteintech@ptglab.com
W: ptglab.com

This product is exclusively available under Proteintech Group brand and is not available to purchase from any other manufacturer.

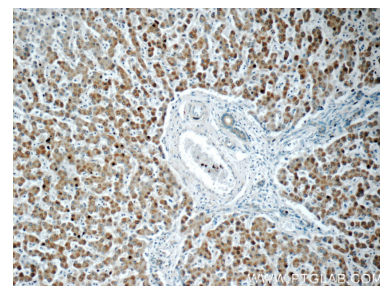
Selected Validation Data



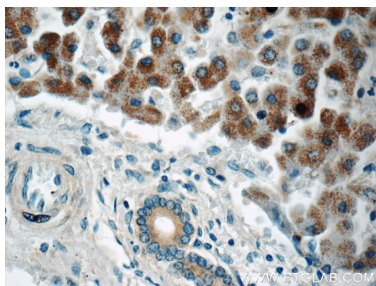
HeLa cells were subjected to SDS PAGE followed by western blot with 14548-1-AP (ARFIP2 antibody) at dilution of 1:500 incubated at room temperature for 1.5 hours.



Immunofluorescent analysis of HeLa cells, using ARFIP2 antibody 14548-1-AP at 1:25 dilution and Rhodamine-labeled goat anti-rabbit IgG (red). Blue pseudocolor = DAPI (fluorescent DNA dye).



Immunohistochemical analysis of paraffin-embedded human liver tissue slide using 14548-1-AP (ARFIP2 Antibody) at dilution of 1:50 (under 10x lens).



Immunohistochemical analysis of paraffin-embedded human liver tissue slide using 14548-1-AP (ARFIP2 Antibody) at dilution of 1:50 (under 40x lens).