

For Research Use Only

AFP Polyclonal antibody

Catalog Number: 14550-1-AP **96 Publications**



Basic Information

Catalog Number:

14550-1-AP

Size:

150ul, Concentration: 650 µg/ml by Nanodrop;

Source:

Rabbit

Isotype:

IgG

Immunogen Catalog Number:

AG6089

GenBank Accession Number:

BC027881

GeneID (NCBI):

174

UNIPROT ID:

P02771

Full Name:

alpha-fetoprotein

Calculated MW:

69 kDa

Observed MW:

68-72 kDa

Purification Method:

Antigen affinity purification

Recommended Dilutions:

WB 1:2000-1:10000

IP 0.5-4.0 µg for 1.0-3.0 mg of total protein lysate

IHC 1:20-1:200

IF 1:50-1:500

Applications

Tested Applications:

WB, IP, IF, IHC, ELISA

Cited Applications:

WB, IF, FC, IHC, CoIP

Species Specificity:

human

Cited Species:

human, rat, mouse

Positive Controls:

WB: BxPC-3 cells, HuH-7 cells, human placenta tissue, L02 cells, HepG2 cells

IP: HepG2 cells,

IHC: human liver cancer tissue, human ovary tumor tissue

IF: MCF-7 cells,

Note-IHC: suggested antigen retrieval with **TE buffer pH 9.0; (*) Alternatively, antigen retrieval may be performed with citrate buffer pH 6.0**

Background Information

AFP, also known as Alpha-fetoprotein, is a major plasma protein in the fetus and its concentration is very low in the adult (PubMed:24120489). AFP is considered a marker of hepatocyte precursors. AFP can be detected at abnormally high concentrations in hepatocellular carcinomas as well as in the plasma and ascitic fluid of adults with hepatoma. High AFP concentrations have been correlated with tumor cell growth, indicating that AFP can serve as a tumor marker (PubMed: 18669658).

Notable Publications

Author	Pubmed ID	Journal	Application
Jian Sun	27714143	Nanoscale	
Shaling Li	36169092	Cancer Sci	IF
Masahiro Yamamoto	28964793	Am J Pathol	IHC

Storage

Storage:

Store at -20°C. Stable for one year after shipment.

Storage Buffer:

PBS with 0.02% sodium azide and 50% glycerol pH 7.3.

Aliquoting is unnecessary for -20°C storage

***** 20ul sizes contain 0.1% BSA**

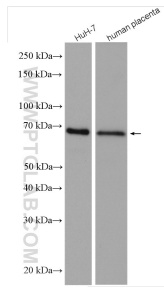
For technical support and original validation data for this product please contact:

T: 1 (888) 4PTGLAB (1-888-478-4522) (toll free in USA), or 1(312) 455-8498 (outside USA)

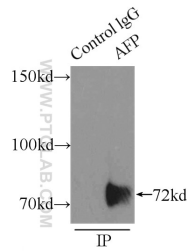
E: proteintech@ptglab.com
W: ptglab.com

This product is exclusively available under Proteintech Group brand and is not available to purchase from any other manufacturer.

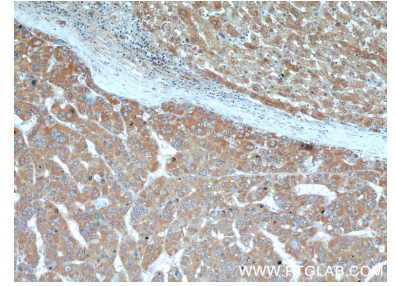
Selected Validation Data



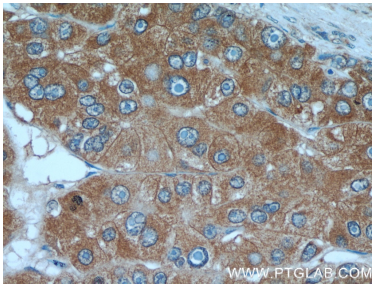
Various lysates were subjected to SDS PAGE followed by western blot with 14550-1-AP (AFP antibody) at dilution of 1:1500 incubated at room temperature for 1.5 hours.



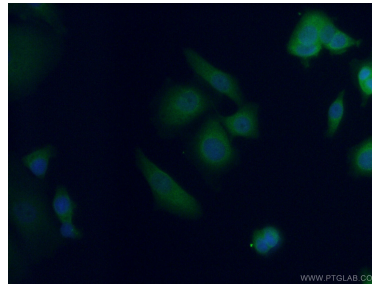
IP result of anti-AFP (IP:14550-1-AP, 5ug; Detection:14550-1-AP 1:1000) with HepG2 cells lysate 6000ug.



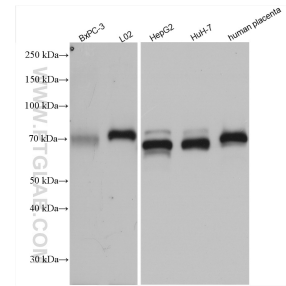
Immunohistochemical analysis of paraffin-embedded human liver cancer using 14550-1-AP (AFP antibody) at dilution of 1:50 (under 10x lens).



Immunohistochemical analysis of paraffin-embedded human liver cancer using 14550-1-AP (AFP antibody) at dilution of 1:50 (under 40x lens).



Immunofluorescent analysis of (4% PFA) fixed MCF-7 cells using 14550-1-AP (AFP antibody) at dilution of 1:50 and Alexa Fluor 488-Conjugated AffiniPure Goat Anti-Rabbit IgG(H+L).



BxPC-3 cells were subjected to SDS PAGE followed by western blot with 14550-1-AP (AFP antibody) at dilution of 1:5000 incubated at room temperature for 1.5 hours.