

## CD13 Polyclonal antibody

Catalog Number: 14553-1-AP

15 Publications

## Basic Information

## Catalog Number:

14553-1-AP

## Size:

150ul, Concentration: 350 ug/ml by Nanodrop;

## Source:

Rabbit

## Isotype:

IgG

## Immunogen Catalog Number:

AG5976

## GenBank Accession Number:

BC058928

## GeneID (NCBI):

290

## ENSEMBL Gene ID:

ENSG00000166825

## UNIPROT ID:

P15144

## Full Name:

alanyl (membrane) aminopeptidase

## Calculated MW:

110 kDa

## Observed MW:

150 kDa

## Purification Method:

Antigen affinity purification

## Recommended Dilutions:

WB: 1:1000-1:8000

IHC: 1:50-1:500

IF-P: 1:50-1:500

IF/ICC: 1:200-1:800

## Applications

## Tested Applications:

WB, IHC, IF/ICC, IF-P, ELISA

## Cited Applications:

WB, IHC, IF, IP

## Species Specificity:

human, mouse, rat

## Cited Species:

human, mouse, rat, pig, rabbit, canine, monkey

**Note-IHC: suggested antigen retrieval with TE buffer pH 9.0; (\*) Alternatively, antigen retrieval may be performed with citrate buffer pH 6.0**

## Positive Controls:

**WB**: HepG2 cells, human liver tissue, human kidney tissue, PC-3 cells, THP-1 cells, mouse kidney tissue, mouse liver tissue

**IHC**: human tonsillitis tissue, human colon tissue, human kidney tissue

**IF-P**: mouse kidney tissue,

**IF/ICC**: HEK-293 cells,

## Background Information

CD13, also named as APN, ANPEP (aminopeptidase N) or PEPN, is belongs to the peptidase M1 family. CD13 is a heavily glycosylated, ~150-240 kDa, type-II membrane, expressed by most cells of myeloid origin including monocytes, macrophages, granulocytes, and their hematopoietic precursors. It is also abundantly expressed in the brush border of epithelial cells from renal proximal tubules and small intestine, in prostatic epithelial cells, in bile duct canaliculi, in mast cells, and, in some cases, in fibroblasts and smooth muscle cells. CD13 is a multifunctional protein and plays varying roles in cell migration, cell proliferation, cell differentiation and so on. CD13 participates in angiogenesis generating and modulating angiogenic signals, and can be a marker of angiogenic vessels. CD13 is also a pan-myeloid marker, present on mature granulocytes and monocytes. (PMID: 8805662, 10098327, 18603472, 18097955, 17897790, 17888402, 21339174)

## Notable Publications

| Author      | Pubmed ID | Journal      | Application |
|-------------|-----------|--------------|-------------|
| Shion Osana | 33091420  | Exp Cell Res | IF          |
| Yang Gu     | 34649567  | Mol Cancer   | WB          |
| Weizhi Wang | 25370073  | Anal Chem    |             |

## Storage

## Storage:

Store at -20°C. Stable for one year after shipment.

## Storage Buffer:

PBS with 0.02% sodium azide and 50% glycerol, pH7.3

Aliquoting is unnecessary for -20°C storage

\*\*\* 20ul sizes contain 0.1% BSA

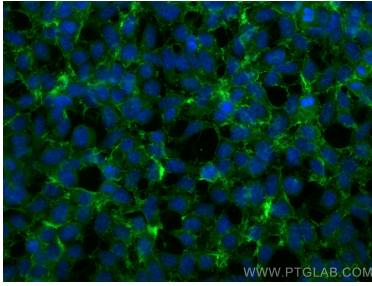
For technical support and original validation data for this product please contact:

T: 1 (888) 4PTGLAB (1-888-478-4522) (toll free in USA), or 1(312) 455-8498 (outside USA)

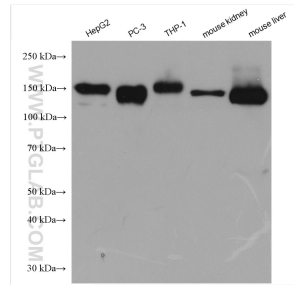
E: [proteintech@ptglab.com](mailto:proteintech@ptglab.com)  
 W: [ptglab.com](http://ptglab.com)

This product is exclusively available under Proteintech Group brand and is not available to purchase from any other manufacturer.

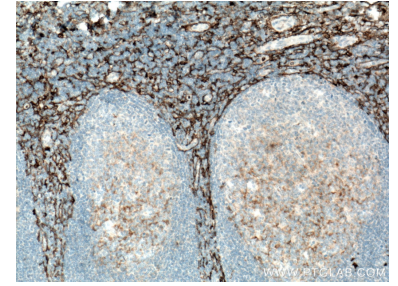
## Selected Validation Data



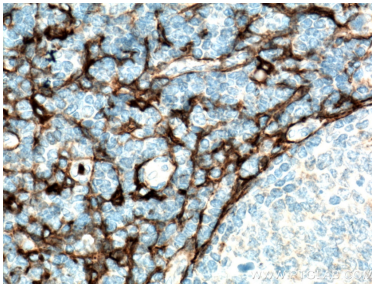
Immunofluorescent analysis of (-20°C Ethanol) fixed HEK-293 cells using CD13 antibody (14553-1-AP) at dilution of 1:400 and CoraLite®488-Conjugated AffiniPure Goat Anti-Rabbit IgG(H+L) (SA00013-2).



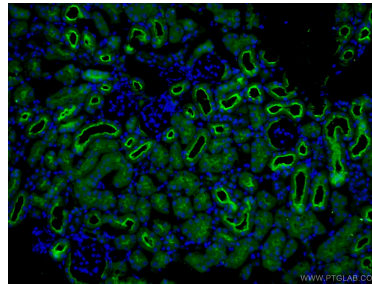
Various lysates were subjected to SDS PAGE followed by western blot with 14553-1-AP (CD13 antibody) at dilution of 1:4000 incubated at room temperature for 1.5 hours.



Immunohistochemical analysis of paraffin-embedded human tonsillitis tissue slide using 14553-1-AP (CD13 antibody) at dilution of 1:200 (under 10x lens. Heat mediated antigen retrieval with Tris-EDTA buffer (pH 9.0).



Immunohistochemical analysis of paraffin-embedded human tonsillitis tissue slide using 14553-1-AP (CD13 antibody) at dilution of 1:200 (under 40x lens. Heat mediated antigen retrieval with Tris-EDTA buffer (pH 9.0).



Immunofluorescent analysis of (4% PFA) fixed mouse kidney tissue using 14553-1-AP (CD13 antibody) at dilution of 1:50 and CoraLite488-Conjugated AffiniPure Goat Anti-Rabbit IgG(H+L).