

For Research Use Only

RBAP48 Polyclonal antibody, PBS Only

Catalog Number: 14557-1-PBS



Basic Information

Catalog Number:

14557-1-PBS

Size:

100ug, Concentration: 1 mg/ml by Nanodrop;

Source:

Rabbit

Isotype:

IgG

Immunogen Catalog Number:

AG6110

GenBank Accession Number:

BC053904

GeneID (NCBI):

5928

UNIPROT ID:

Q09028

Full Name:

retinoblastoma binding protein 4

Calculated MW:

48 kDa

Observed MW:

40 kDa, 48-53 kDa

Purification Method:

Antigen affinity purification

Applications

Tested Applications:

WB, IHC, IF/ICC, Indirect ELISA

Species Specificity:

human, mouse, rat

Storage

Storage:

Store at -80°C.

Storage Buffer:

PBS Only

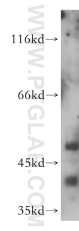
For technical support and original validation data for this product please contact:

T: 1 (888) 4PTGLAB (1-888-478-4522) (toll free in USA), or 1(312) 455-8498 (outside USA)

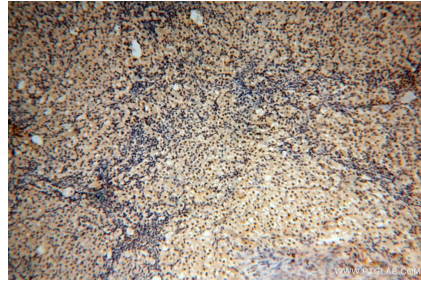
E: proteintech@ptglab.com
W: ptglab.com

This product is exclusively available under Proteintech Group brand and is not available to purchase from any other manufacturer.

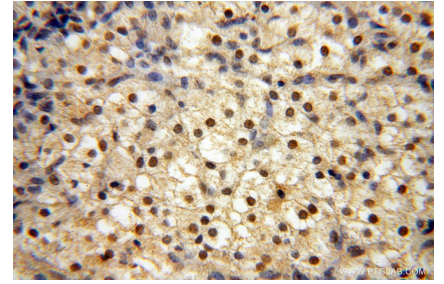
Selected Validation Data



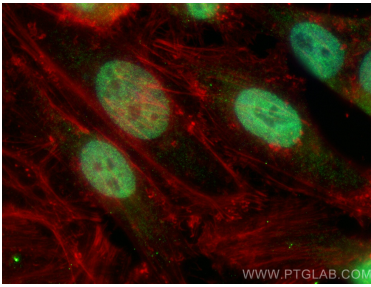
HeLa cells were subjected to SDS PAGE followed by western blot with 14557-1-AP (RBAP48 antibody) at dilution of 1:1000 incubated at room temperature for 1.5 hours. This data was developed using the same antibody clone with 14557-1-PBS in a different storage buffer formulation.



Immunohistochemical analysis of paraffin-embedded human ovary using 14557-1-AP (RBAP48 antibody) at dilution of 1:50 (under 10x lens). This data was developed using the same antibody clone with 14557-1-PBS in a different storage buffer formulation.



Immunohistochemical analysis of paraffin-embedded human ovary using 14557-1-AP (RBAP48 antibody) at dilution of 1:50 (under 40x lens). This data was developed using the same antibody clone with 14557-1-PBS in a different storage buffer formulation.



Immunofluorescent analysis of (4% PFA) fixed HeLa cells using RBAP48 antibody (14557-1-AP) at dilution of 1:400 and CoraLite®488-Conjugated Goat Anti-Rabbit IgG(H+L) (SA00013-2), CL594-phalloidin (red). This data was developed using the same antibody clone with 14557-1-PBS in a different storage buffer formulation.