

For Research Use Only

CDR2L Polyclonal antibody

Catalog Number: 14563-1-AP

Featured Product

5 Publications



Basic Information

Catalog Number:

14563-1-AP

Size:

150ul, Concentration: 200 ug/ml by Bradford method using BSA as the standard;

Source:

Rabbit

Isotype:

IgG

Immunogen Catalog Number:

AG6127

GenBank Accession Number:

BC047534

GeneID (NCBI):

30850

UNIPROT ID:

Q86X02

Full Name:

cerebellar degeneration-related protein 2-like

Calculated MW:

53 kDa

Observed MW:

53 kDa

Purification Method:

Antigen affinity purification

Recommended Dilutions:

IP 0.5-4.0 ug for 1.0-3.0 mg of total protein lysate

IHC 1:50-1:500

IF/ICC 1:200-1:800

Applications

Tested Applications:

IHC, IF/ICC, IP, ELISA

Cited Applications:

WB, IHC, IF, IP

Species Specificity:

human, mouse, rat

Cited Species:

human, rat

Note-IHC: suggested antigen retrieval with TE buffer pH 9.0; (*) Alternatively, antigen retrieval may be performed with citrate buffer pH 6.0

Positive Controls:

IP: SH-SY5Y cells,

IHC: human cerebellum tissue, mouse brain tissue

IF/ICC: HeLa cells,

Background Information

Cerebellar degeneration-related protein 2-like (CDR2L), also named as HUMPPA or Paraneoplastic 62 kDa antigen, is a 465 amino acid protein, which belongs to the CDR2 family. CDR2L contains three potential coiled-coil regions. The functions of protein is so far not known. CDR2L is expressed in the brain and localizes in the cytoplasm. The predicted MW of this protein is 53 kDa.

Notable Publications

Author	Pubmed ID	Journal	Application
Ida Herdlevaer	33009713	Ann Clin Transl Neurol	WB,IF,IP
Margrethe Rasputnig	34823119	J Neuroimmunol	WB,IHC
Margrethe Rasputnig	28710511	Cancer Immunol Immunother	WB,IHC

Storage

Storage:

Store at -20°C. Stable for one year after shipment.

Storage Buffer:

PBS with 0.02% sodium azide and 50% glycerol pH 7.3.

Aliquoting is unnecessary for -20°C storage

*** 20ul sizes contain 0.1% BSA

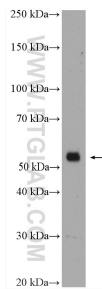
For technical support and original validation data for this product please contact:

T: 1 (888) 4PTGLAB (1-888-478-4522) (toll free in USA), or 1(312) 455-8498 (outside USA)

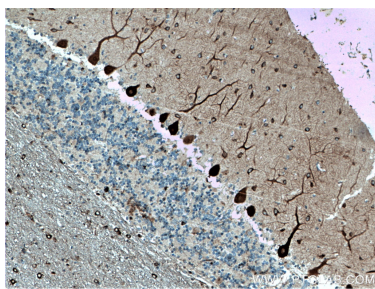
E: proteintech@ptglab.com
W: ptglab.com

This product is exclusively available under Proteintech Group brand and is not available to purchase from any other manufacturer.

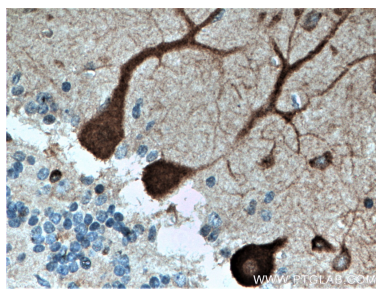
Selected Validation Data



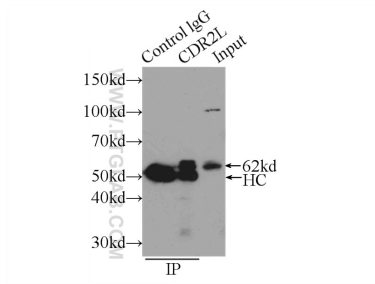
K-562 cells were subjected to SDS PAGE followed by western blot with 14563-1-AP (CDR2L antibody) at dilution of 1:600 incubated at room temperature for 1.5 hours.



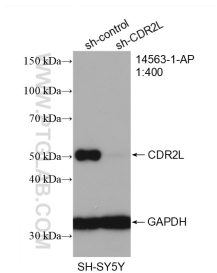
Immunohistochemical analysis of paraffin-embedded human cerebellum tissue slide using 14563-1-AP (CDR2L antibody) at dilution of 1:200 (under 10x lens. Heat mediated antigen retrieval with Tris-EDTA buffer (pH 9.0).



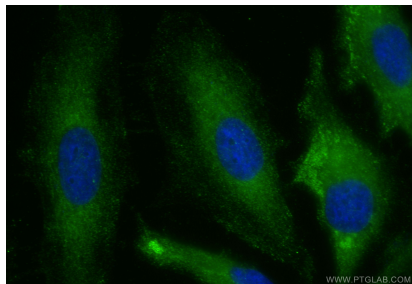
Immunohistochemical analysis of paraffin-embedded human cerebellum tissue slide using 14563-1-AP (CDR2L antibody) at dilution of 1:200 (under 40x lens. Heat mediated antigen retrieval with Tris-EDTA buffer (pH 9.0).



IP result of anti-CDR2L (IP:14563-1-AP, 3ug; Detection:14563-1-AP 1:500) with SH-SY5Y cells lysate 2500ug.



WB result of CDR2L antibody (14563-1-AP; 1:400; incubated at room temperature for 1.5 hours) with sh-Control and sh-CDR2L transfected SH-SY5Y cells.



Immunofluorescent analysis of (-20°C Ethanol) fixed HeLa cells using CDR2L antibody (14563-1-AP) at dilution of 1:400 and CoraLite®488-Conjugated Goat Anti-Rabbit IgG(H+L) (SA00013-2).