

For Research Use Only

JIP1/IB-1 Polyclonal antibody

Catalog Number: 14568-1-AP **6 Publications**



Basic Information

Catalog Number: 14568-1-AP	GenBank Accession Number: BC068470	Purification Method: Antigen affinity purification
Size: 150ul , Concentration: 550 µg/ml by Nanodrop and 300 µg/ml by Bradford method using BSA as the standard;	GeneID (NCBI): 9479	Recommended Dilutions: WB 1:200-1:1000 IHC 1:50-1:500 IF 1:10-1:100
Source: Rabbit	Full Name: mitogen-activated protein kinase 8 interacting protein 1	
Isotype: IgG	Calculated MW: 78 kDa	
Immunogen Catalog Number: AG6150	Observed MW: 110 kDa	

Applications

Tested Applications:
IF, IHC, WB, ELISA

Cited Applications:
IF, IP, WB

Species Specificity:
human, mouse, rat

Cited Species:
human, mouse

Note-IHC: suggested antigen retrieval with TE buffer pH 9.0; (*) Alternatively, antigen retrieval may be performed with citrate buffer pH 6.0

Positive Controls:

WB : fetal human brain tissue,

IHC : human oesophagus cancer tissue, mouse brain tissue, human pancreas tissue

IF : PC-12 cells,

Background Information

Notable Publications

Author	Pubmed ID	Journal	Application
Huixue Zhang	28977840	Oncotarget	WB
Changjiang Ying	34194338	Front Physiol	IP, WB
Lei Wu	32644793	ACS Chem Neurosci	IF

Storage

Storage:

Store at -20°C. Stable for one year after shipment.

Storage Buffer:

PBS with 0.02% sodium azide and 50% glycerol pH 7.3.

Aliquoting is unnecessary for -20°C storage

***** 20ul sizes contain 0.1% BSA**

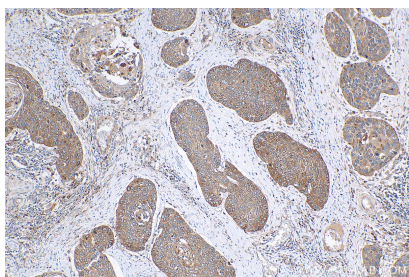
For technical support and original validation data for this product please contact:

T: 1 (888) 4PTGLAB (1-888-478-4522) (toll free in USA), or 1(312) 455-8498 (outside USA)

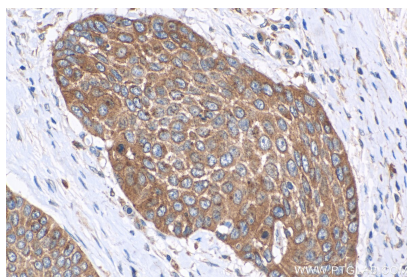
E: proteintech@ptglab.com
W: ptglab.com

This product is exclusively available under Proteintech Group brand and is not available to purchase from any other manufacturer.

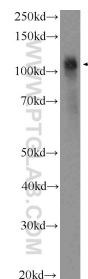
Selected Validation Data



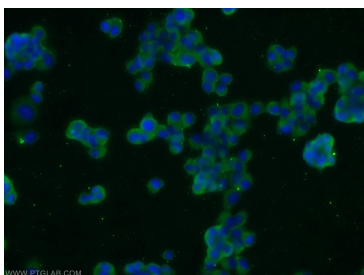
Immunohistochemical analysis of paraffin-embedded human oesophagus cancer tissue slide using 14568-1-AP (JIP1/IB-1 antibody) at dilution of 1:200 (under 10x lens). Heat mediated antigen retrieval with Tris-EDTA buffer (pH 9.0).



Immunohistochemical analysis of paraffin-embedded human oesophagus cancer tissue slide using 14568-1-AP (JIP1/IB-1 antibody) at dilution of 1:200 (under 40x lens). Heat mediated antigen retrieval with Tris-EDTA buffer (pH 9.0).



fetal human brain tissue were subjected to SDS PAGE followed by western blot with 14568-1-AP (JIP1 Antibody) at dilution of 1:300 incubated at room temperature for 1.5 hours.



Immunofluorescent analysis of PC-12 cells using 14568-1-AP (JIP1 antibody) at dilution of 1:25 and Alexa Fluor 488-conjugated AffiniPure Goat Anti-Rabbit IgG(H+L).