

For Research Use Only

# FBXO27 Polyclonal antibody

Catalog Number: 14570-1-AP

Featured Product

2 Publications



## Basic Information

|  |  |  |
|--|--|--|
| <b>Catalog Number:</b><br>14570-1-AP   | <b>GenBank Accession Number:</b><br>BC030060 | <b>Purification Method:</b><br>Antigen affinity purification       |
| <b>Size:</b><br>150ul , Concentration: 200 µg/ml by Nanodrop and 153 µg/ml by Bradford method using BSA as the standard; | <b>GeneID (NCBI):</b><br>126433              | <b>Recommended Dilutions:</b><br>WB 1:500-1:2000<br>IHC 1:50-1:500 |
| <b>Source:</b><br>Rabbit   | <b>Full Name:</b><br>F-box protein 27        |  |
| <b>Isotype:</b><br>IgG   | <b>Calculated MW:</b><br>32 kDa              |  |
| <b>Immunogen Catalog Number:</b><br>AG6157   | <b>Observed MW:</b><br>32 kDa                |  |

## Applications

|   |                                   |
|---|-----------------------------------|
| <b>Tested Applications:</b><br>IHC, WB, ELISA | <b>Positive Controls:</b>         |
| <b>Cited Applications:</b><br>IF, WB          | <b>WB :</b> Panc-1,               |
| <b>Species Specificity:</b><br>human          | <b>IHC :</b> human kidney tissue, |
| <b>Cited Species:</b><br>human                |                                   |

**Note-IHC: suggested antigen retrieval with TE buffer pH 9.0; (\*) Alternatively, antigen retrieval may be performed with citrate buffer pH 6.0**

## Background Information

FBXO27 is a glycoprotein-specific F-box protein that is part of the SCF (SKP1/CUL1/F-box protein) ubiquitin ligase complex, and SCFFBXO27 ubiquitinates glycoproteins in damaged lysosomes will regulate autophagic machinery recruitment (PMID: 28743755). Unlike F-box proteins in other SCF complexes, FBXO27 is subject to N-myristoylation, which localizes it to membranes, allowing it to accumulate rapidly around damaged lysosomes.

## Notable Publications

| Author         | Pubmed ID | Journal                  | Application |
|----------------|-----------|--------------------------|-------------|
| Yukiko Yoshida | 28743755  | Proc Natl Acad Sci U S A | WB, IF      |
| Chang Woo Chae | 37357416  | Autophagy                | WB, IF      |

## Storage

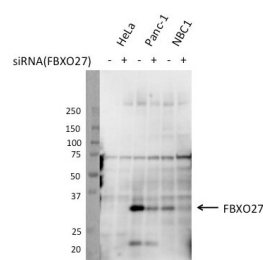
**Storage:**  
Store at -20°C. Stable for one year after shipment.  
**Storage Buffer:**  
PBS with 0.02% sodium azide and 50% glycerol pH 7.3.  
Aliquoting is unnecessary for -20°C storage

\*\*\* 20ul sizes contain 0.1% BSA

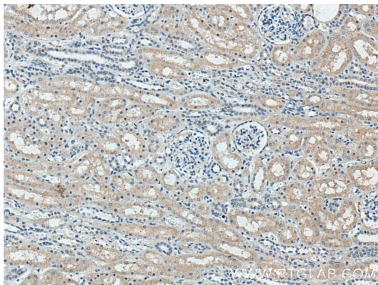
For technical support and original validation data for this product please contact:  
T: 1 (888) 4PTGLAB (1-888-478-4522) (toll free in USA), or 1(312) 455-8498 (outside USA)  
E: [proteintech@ptglab.com](mailto:proteintech@ptglab.com)  
W: [ptglab.com](http://ptglab.com)

This product is exclusively available under Proteintech Group brand and is not available to purchase from any other manufacturer.

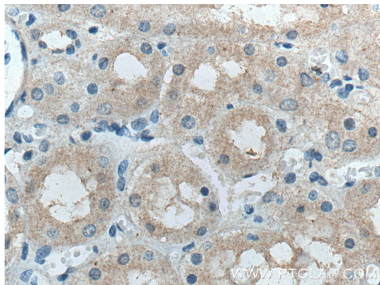
## Selected Validation Data



FBXO27 expression in cells. Each whole cell lysate containing 15 ug protein was analyzed by immunoblotting using FBXO27 (14570-1-AP: 1:2000). Knock-down experiment confirmed that the pointed band showed FBXO27. (Data from Dr. Yukiko Yoshida, Ubiquitin Project, Tokyo Metropolitan Institute of Medical Science.).



Immunohistochemical analysis of paraffin-embedded human kidney tissue slide using 14570-1-AP (FBXO27 antibody) at dilution of 1:200 (under 10x lens). Heat mediated antigen retrieval with Tris-EDTA buffer (pH 9.0).



Immunohistochemical analysis of paraffin-embedded human kidney tissue slide using 14570-1-AP (FBXO27 antibody) at dilution of 1:200 (under 40x lens). Heat mediated antigen retrieval with Tris-EDTA buffer (pH 9.0).