

For Research Use Only

PPM1K Polyclonal antibody

Catalog Number: 14573-1-AP

Featured Product

6 Publications



Basic Information

Catalog Number:

14573-1-AP

Size:

150ul, Concentration: 1000 ug/ml by Nanodrop and 620 ug/ml by Bradford method using BSA as the standard;

Source:

Rabbit

Isotype:

IgG

Immunogen Catalog Number:

AG5660

GenBank Accession Number:

BC037552

GeneID (NCBI):

152926

UNIPROT ID:

Q8N3J5

Full Name:

protein phosphatase 1K (PP2C domain containing)

Calculated MW:

41 kDa

Observed MW:

30-40 kDa

Purification Method:

Antigen affinity purification

Recommended Dilutions:

WB 1:500-1:1000

IHC 1:20-1:200

Applications

Tested Applications:

WB, IHC, ELISA

Cited Applications:

WB, IF

Species Specificity:

human, mouse, rat

Cited Species:

human, mouse, rat

Note-IHC: suggested antigen retrieval with TE buffer pH 9.0; (*) Alternatively, antigen retrieval may be performed with citrate buffer pH 6.0

Positive Controls:

WB : human brain tissue, human heart tissue

IHC : human gliomas tissue,

Background Information

Protein phosphatase, Mg²⁺/Mn²⁺ dependent 1K (PPM1K), is a member of the PPM family of Mn²⁺/Mg²⁺-dependent protein phosphatases. PPM1K, essential for cell survival and development, is targeted to the mitochondria where it plays a key role in regulation of the mitochondrial permeability transition pore. PPM1K is essential for the regulation and nutrient-induced activation of the branched-chain alpha-keto acid dehydrogenase complex (BCKD or BCKDC), which catalyzes the breakdown of branched-chain amino acids (BCAA).

Notable Publications

Author	Pubmed ID	Journal	Application
Yang Yang	34084135	Front Pharmacol	WB
Dan Shao	30050148	Nat Commun	WB, IF
Shuyun Liu	34474107	Free Radic Biol Med	WB

Storage

Storage:

Store at -20°C. Stable for one year after shipment.

Storage Buffer:

PBS with 0.02% sodium azide and 50% glycerol pH 7.3.

Aliquoting is unnecessary for -20°C storage

*** 20ul sizes contain 0.1% BSA

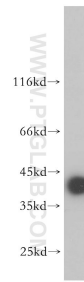
For technical support and original validation data for this product please contact:

T: 1 (888) 4PTGLAB (1-888-478-4522) (toll free in USA), or 1(312) 455-8498 (outside USA)

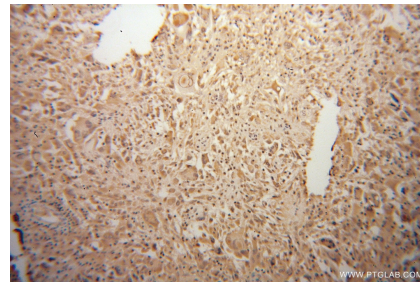
E: proteintech@ptglab.com
W: ptglab.com

This product is exclusively available under Proteintech Group brand and is not available to purchase from any other manufacturer.

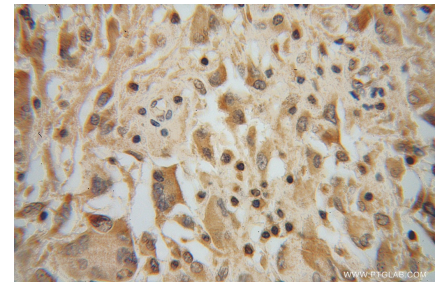
Selected Validation Data



human brain tissue were subjected to SDS PAGE followed by western blot with 14573-1-AP (PPM1K antibody) at dilution of 1:500 incubated at room temperature for 1.5 hours.



Immunohistochemical analysis of paraffin-embedded human gliomas using 14573-1-AP (PPM1K antibody) at dilution of 1:50 (under 10x lens).



Immunohistochemical analysis of paraffin-embedded human gliomas using 14573-1-AP (PPM1K antibody) at dilution of 1:50 (under 40x lens).