

For Research Use Only

Pikachurin Polyclonal antibody

Catalog Number: 14578-1-AP

3 Publications



Basic Information

Catalog Number:

14578-1-AP

Size:

150ul, Concentration: 500 ug/ml by Nanodrop and 253 ug/ml by Bradford method using BSA as the standard;

Source:

Rabbit

Isotype:

IgG

Immunogen Catalog Number:

AG5986

GenBank Accession Number:

BC033177

GeneID (NCBI):

133584

UNIPROT ID:

Q63HQ2

Full Name:

EGF-like, fibronectin type III and laminin G domains

Calculated MW:

111 kDa

Observed MW:

60 kDa

Purification Method:

Antigen affinity purification

Recommended Dilutions:

WB 1:500-1:2000

IF-P 1:50-1:500

IF/ICC 1:200-1:800

Applications

Tested Applications:

WB, IF/ICC, IF-P, ELISA

Cited Applications:

WB, IF, ColP

Species Specificity:

human, mouse, rat

Cited Species:

human, mouse

Positive Controls:

WB: human placenta tissue, PC-3 cells, SH-SY5Y cells

IF-P: mouse eye tissue,

IF/ICC: SH-SY5Y cells,

Background Information

Pikachurin, also known as EGFLAM or FLJ39155, is an extracellular matrix-like retinal protein that has been found to localize in the synaptic cleft of the photoreceptor ribbon synapse (PMID: 18641643). Pikachurin is a dystroglycan-interacting protein and has an essential role in photoreceptor ribbon synapse formation. Pikachurin is a 1017-amino-acid protein with a calculated molecular weight of 111 kDa and high mRNA abundance in retina. This antibody detects a 60-kDa band, which has been reported and likely represents a fragment resulting from cleavage of Pikachurin (PMID: 23226524).

Notable Publications

Author	Pubmed ID	Journal	Application
Chen Liang	32178579	Stem Cells Dev	IF
James F Striebel	39381753	iScience	IF
Kaishu Li	38996666	Int Immunopharmacol	WB, ColP

Storage

Storage:

Store at -20°C. Stable for one year after shipment.

Storage Buffer:

PBS with 0.02% sodium azide and 50% glycerol pH 7.3.

Aliquoting is unnecessary for -20°C storage

*** 20ul sizes contain 0.1% BSA

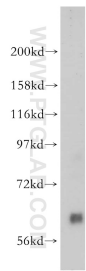
For technical support and original validation data for this product please contact:

T: 1 (888) 4PTGLAB (1-888-478-4522) (toll free in USA), or 1(312) 455-8498 (outside USA)

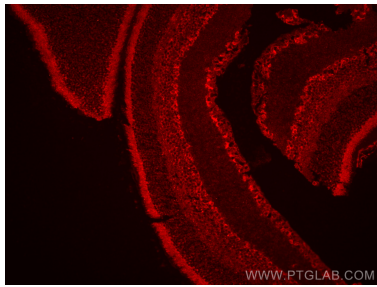
E: proteintech@ptglab.com
W: ptglab.com

This product is exclusively available under Proteintech Group brand and is not available to purchase from any other manufacturer.

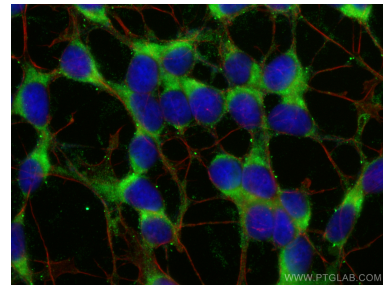
Selected Validation Data



human placenta tissue were subjected to SDS PAGE followed by western blot with 14578-1-AP (Pikachurin antibody) at dilution of 1:400 incubated at room temperature for 1.5 hours.



Immunofluorescent analysis of (4% PFA) fixed paraffin-embedded mouse eye tissue using Pikachurin antibody (14578-1-AP) at dilution of 1:200 and CoraLite®594-Conjugated Goat Anti-Rabbit IgG(H+L) (SA00013-4). Heat mediated antigen retrieval with Tris-EDTA buffer (pH 9.0).



Immunofluorescent analysis of (-20°C Ethanol) fixed SH-SY5Y cells using Pikachurin antibody (14578-1-AP) at dilution of 1:400 and CoraLite®488-Conjugated AffiniPure Goat Anti-Rabbit IgG(H+L) (SA00013-2), CL594-Phalloidin (red).