

For Research Use Only

RPL7 Polyclonal antibody

Catalog Number: 14583-1-AP

12 Publications



Basic Information

Catalog Number:

14583-1-AP

Size:

150ul, Concentration: 1000 ug/ml by Nanodrop and 447 ug/ml by Bradford method using BSA as the standard;

Source:

Rabbit

Isotype:

IgG

Immunogen Catalog Number:

AG6104

GenBank Accession Number:

BC006095

GeneID (NCBI):

6129

UNIPROT ID:

P18124

Full Name:

ribosomal protein L7

Calculated MW:

29 kDa

Observed MW:

29-30 kDa

Purification Method:

Antigen affinity purification

Recommended Dilutions:

WB 1:500-1:3000

IP 0.5-4.0 ug for 1.0-3.0 mg of total protein lysate

IHC 1:20-1:200

IF/ICC 1:50-1:500

Applications

Tested Applications:

WB, IHC, IF/ICC, IP, ELISA

Cited Applications:

WB, IHC, IF, RIP

Species Specificity:

human, mouse, rat

Cited Species:

human, mouse, rat

Note-IHC: suggested antigen retrieval with TE buffer pH 9.0; (*) Alternatively, antigen retrieval may be performed with citrate buffer pH 6.0

Positive Controls:

WB : HEK-293 cells, mouse kidney tissue

IP : HEK-293 cells,

IHC : human skin cancer tissue,

IF/ICC : HEK-293 cells,

Background Information

The mammalian ribosome comprises 79 ribosomal proteins and four rRNAs, which combine in equimolar ratios to form the small (40S) and large (60S) subunits. Ribosome proteins are a direct and critical target of the PI3K pathway in promoting growth.[PMID:15289434]. RPL7 binds to G-rich structures in 28S rRNA, and plays a regulatory role in the translation apparatus, inhibits cell-free translation of mRNAs. In addition, RPL7 is suggested to have a role as an integral part of natural freeze tolerance[PMID: 18706984]. Besides, RPL7 is responsible for its normal ribosome functions including the nuclear targeting, ribosome assembly and translation[PMID:17258209].

Notable Publications

Author	Pubmed ID	Journal	Application
Baiwen Chen	34735883	Biochem Biophys Res Commun	WB, RIP
Phaedra R Theodoridis	33568529	Proc Natl Acad Sci U S A	IHC
Rui Su	35145225	Nat Cell Biol	WB

Storage

Storage:

Store at -20°C. Stable for one year after shipment.

Storage Buffer:

PBS with 0.02% sodium azide and 50% glycerol pH 7.3.

Aliquoting is unnecessary for -20°C storage

*** 20ul sizes contain 0.1% BSA

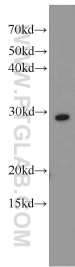
For technical support and original validation data for this product please contact:

T: 1 (888) 4PTGLAB (1-888-478-4522) (toll free in USA), or 1(312) 455-8498 (outside USA)

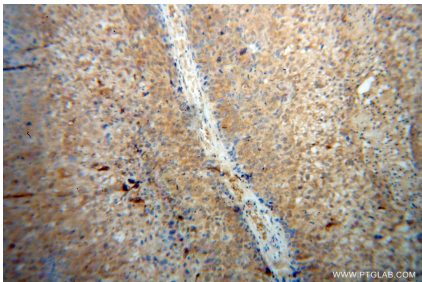
E: proteintech@ptglab.com
W: ptglab.com

This product is exclusively available under Proteintech Group brand and is not available to purchase from any other manufacturer.

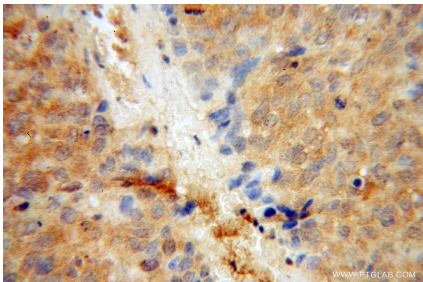
Selected Validation Data



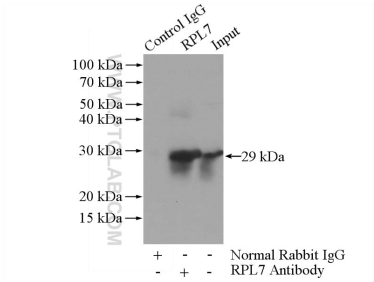
HEK-293 cells were subjected to SDS PAGE followed by western blot with 14583-1-AP (RPL7 antibody) at dilution of 1:1500 incubated at room temperature for 1.5 hours.



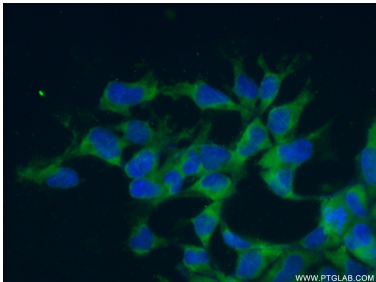
Immunohistochemical analysis of paraffin-embedded human skin cancer using 14583-1-AP (RPL7 antibody) at dilution of 1:100 (under 10x lens).



Immunohistochemical analysis of paraffin-embedded human skin cancer using 14583-1-AP (RPL7 antibody) at dilution of 1:100 (under 40x lens).



IP result of anti-RPL7 (IP:14583-1-AP, 3ug; Detection:14583-1-AP 1:1000) with HEK-293 cells lysate 880ug.



Immunofluorescent analysis of (4% PFA) fixed HEK-293 cells using 14583-1-AP (RPL7 antibody) at dilution of 1:50 and Alexa Fluor 488-conjugated Goat Anti-Rabbit IgG(H+L).