

For Research Use Only

ERCC1 Polyclonal antibody

Catalog Number: 14586-1-AP

Featured Product

16 Publications



Basic Information

Catalog Number: 14586-1-AP	GenBank Accession Number: BC052813	Purification Method: Antigen affinity purification
Size: 150ul, Concentration: 550 µg/ml by Nanodrop and 333 µg/ml by Bradford method using BSA as the standard;	GeneID (NCBI): 2067	Recommended Dilutions: WB 1:1000-1:5000 IP 0.5-4.0 µg for 1.0-3.0 mg of total protein lysate IHC 1:20-1:200 IF 1:50-1:500
Source: Rabbit	Full Name: excision repair cross-complementing rodent repair deficiency, complementation group 1 (includes overlapping antisense sequence)	
Isotype: IgG	Calculated MW: 33 kDa	
Immunogen Catalog Number: AG6112	Observed MW: 38 kDa	

Applications

Tested Applications:

IF, IHC, IP, WB, ELISA

Cited Applications:

IHC, WB

Species Specificity:

human, mouse, rat

Cited Species:

human

Positive Controls:

WB: HeLa cells, human kidney tissue, MCF-7 cells, SKOV-3 cells, T-47D cells

IP: MCF-7 cells,

IHC: human testis tissue, human brain tissue, human ovary tissue, human skin tissue, human spleen tissue

IF: MCF-7 cells,

Note-IHC: suggested antigen retrieval with TE buffer pH 9.0; (*) Alternatively, antigen retrieval may be performed with citrate buffer pH 6.0

Background Information

Excision Repair Cross Complementing 1 (ERCC1) is a structure-specific endonuclease that is responsible for the 5'-incision during DNA repair. It forms a complex with ERCC11, XPF and ERCC4, which are required in both recombinatorial repair and nucleotide excision repair. It has been found that ERCC1, together with RRM1, are determinants of survival after surgical treatment of early-stage, non-small-cell lung cancer. (Ref: Simon, ER. 2005). The calculated molecular weight of ERCC1 is 33 kDa, but the modified ERCC1 is about 38 kDa.

Notable Publications

Author	Pubmed ID	Journal	Application
Jiali Fu	34544452	Cancer Cell Int	WB
Li-Ming Tan	31772670	J Cancer	WB
Ting-Ting Gong	32437713	Exp Cell Res	WB

Storage

Storage:

Store at -20°C. Stable for one year after shipment.

Storage Buffer:

PBS with 0.02% sodium azide and 50% glycerol pH 7.3.

Aliquoting is unnecessary for -20°C storage

*** 20ul sizes contain 0.1% BSA

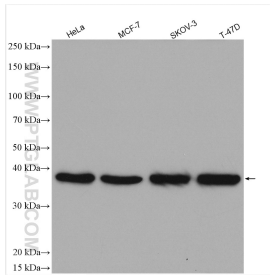
For technical support and original validation data for this product please contact:

T: 1 (888) 4PTGLAB (1-888-478-4522) (toll free in USA), or 1(312) 455-8498 (outside USA)

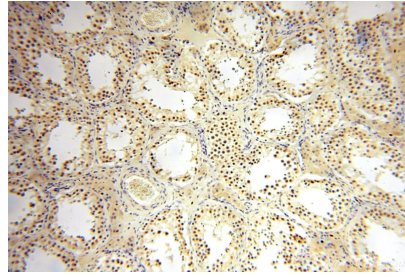
E: proteintech@ptglab.com
W: ptglab.com

This product is exclusively available under Proteintech Group brand and is not available to purchase from any other manufacturer.

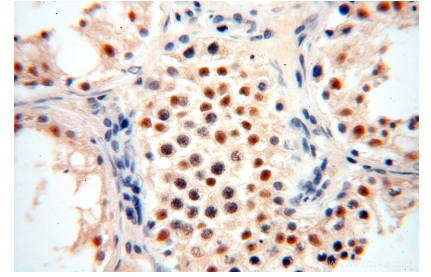
Selected Validation Data



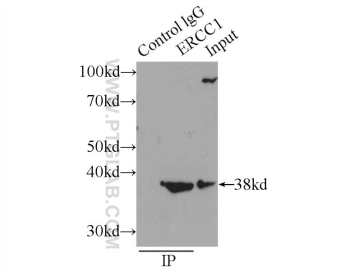
Various lysates were subjected to SDS PAGE followed by western blot with 14586-1-AP (ERCC1 antibody) at dilution of 1:2500 incubated at room temperature for 1.5 hours.



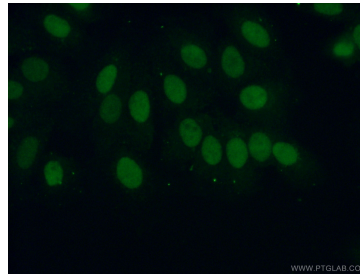
Immunohistochemical analysis of paraffin-embedded human testis using 14586-1-AP (ERCC1 antibody) at dilution of 1:50 (under 10x lens).



Immunohistochemical analysis of paraffin-embedded human testis using 14586-1-AP (ERCC1 antibody) at dilution of 1:50 (under 40x lens).



IP Result of anti-ERCC1 (IP:14586-1-AP, 3ug; Detection:14586-1-AP 1:300) with MCF-7 cells lysate 1600ug.



Immunofluorescent analysis of (10% Formaldehyde) fixed MCF-7 cells using 14586-1-AP (ERCC1 antibody) at dilution of 1:50 and Alexa Fluor 488-conjugated AffiniPure Goat Anti-Rabbit IgG(H+L).