

For Research Use Only

CES3 Polyclonal antibody

Catalog Number: 14587-1-AP

2 Publications



Basic Information

Catalog Number:

14587-1-AP

Size:

150ul, Concentration: 600 ug/ml by Nanodrop and 333 ug/ml by Bradford method using BSA as the standard;

Source:

Rabbit

Isotype:

IgG

Immunogen Catalog Number:

AG6113

GenBank Accession Number:

BC053670

GeneID (NCBI):

23491

UNIPROT ID:

Q6UWW8

Full Name:

carboxylesterase 3

Calculated MW:

62 kDa

Observed MW:

60-62 kDa

Purification Method:

Antigen affinity purification

Recommended Dilutions:

WB 1:2000-1:10000

IHC 1:500-1:2000

IF/ICC 1:50-1:500

Applications

Tested Applications:

WB, IHC, IF/ICC, ELISA

Cited Applications:

WB

Species Specificity:

human, mouse

Cited Species:

human, mouse

Note-IHC: suggested antigen retrieval with TE buffer pH 9.0; (*) Alternatively, antigen retrieval may be performed with citrate buffer pH 6.0

Positive Controls:

WB : mouse liver tissue,

IHC : human stomach cancer tissue,

IF/ICC : HeLa cells,

Background Information

CES3 is involved in the detoxification of xenobiotics and in the activation of ester and amide prodrugs. It is expressed in liver, colon and small intestine. This antibody recognizes both isoforms with MW 60-62 kDa and 24 kDa.

Notable Publications

Author	Pubmed ID	Journal	Application
Jianying Bai	28866046	Environ Toxicol Pharmacol	WB
Galligan James J JJ	21319786	J Proteome Res	WB

Storage

Storage:

Store at -20°C. Stable for one year after shipment.

Storage Buffer:

PBS with 0.02% sodium azide and 50% glycerol pH 7.3.

Aliquoting is unnecessary for -20°C storage

*** 20ul sizes contain 0.1% BSA

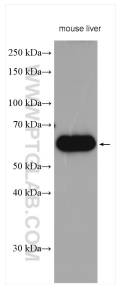
For technical support and original validation data for this product please contact:

T: 1 (888) 4PTGLAB (1-888-478-4522) (toll free in USA), or 1(312) 455-8498 (outside USA)

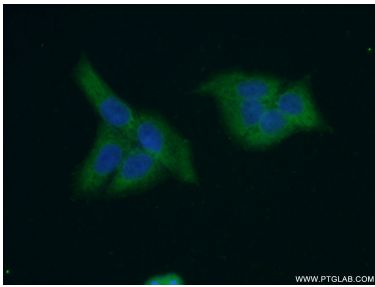
E: proteintech@ptglab.com
W: ptglab.com

This product is exclusively available under Proteintech Group brand and is not available to purchase from any other manufacturer.

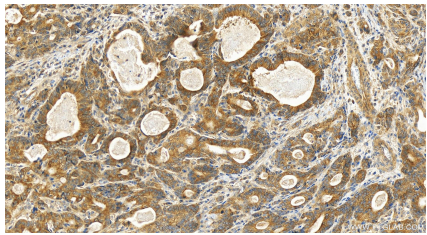
Selected Validation Data



mouse liver tissue were subjected to SDS PAGE followed by western blot with 14587-1-AP (CES3 antibody) at dilution of 1:5000 incubated at room temperature for 1.5 hours.



Immunofluorescent analysis of (-20°C Ethanol) fixed HeLa cells using 14587-1-AP (CES3 antibody) at dilution of 1:50 and Alexa Fluor 488-conjugated AffiniPure Goat Anti-Rabbit IgG(H+L).



Immunohistochemical analysis of paraffin-embedded human stomach cancer tissue slide using 14587-1-AP (CES3 antibody) at dilution of 1:1000 (under 20x lens). Heat mediated antigen retrieval with Tris-EDTA buffer (pH 9.0).