

For Research Use Only

MAGEA6 Polyclonal antibody

Catalog Number: 14602-1-AP

4 Publications



Basic Information

Catalog Number: 14602-1-AP	GenBank Accession Number: BC067731	Purification Method: Antigen affinity purification
Size: 150ul , Concentration: 800 µg/ml by Nanodrop;	GeneID (NCBI): 4105	Recommended Dilutions: WB 1:500-1:3000 IHC 1:50-1:500 IF 1:10-1:100
Source: Rabbit	Full Name: melanoma antigen family A, 6	
Isotype: IgG	Calculated MW: 35 kDa	
Immunogen Catalog Number: AG6148	Observed MW: 45-50 kDa	

Applications

Tested Applications: IF, IHC, WB, ELISA	Positive Controls:
Cited Applications: IHC, WB	WB : mouse testis tissue, A375 cells, rat testis tissue
Species Specificity: human, mouse, rat	IHC : human lung cancer tissue, human breast cancer tissue
Cited Species: human	IF : A375 cells,
Note-IHC: suggested antigen retrieval with TE buffer pH 9.0; (*) Alternatively, antigen retrieval may be performed with citrate buffer pH 6.0	

Background Information

Notable Publications

Author	Pubmed ID	Journal	Application
Albert Giralte	31712124	Exp Neurol	IHC
Jun Hao	31410142	Exp Ther Med	IHC
Manyu Liu	35126707	Exp Ther Med	WB

Storage

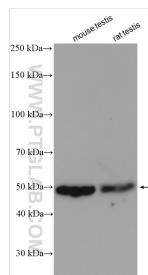
Storage:
Store at -20°C. Stable for one year after shipment.
Storage Buffer:
PBS with 0.02% sodium azide and 50% glycerol pH 7.3.
Aliquoting is unnecessary for -20°C storage

*** 20ul sizes contain 0.1% BSA

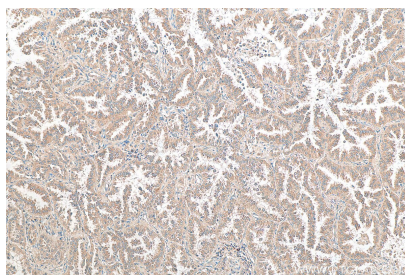
For technical support and original validation data for this product please contact:
T: 1 (888) 4PTGLAB (1-888-478-4522) (toll free in USA), or 1(312) 455-8498 (outside USA)
E: proteintech@ptglab.com
W: ptglab.com

This product is exclusively available under Proteintech Group brand and is not available to purchase from any other manufacturer.

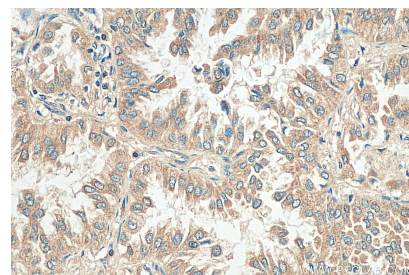
Selected Validation Data



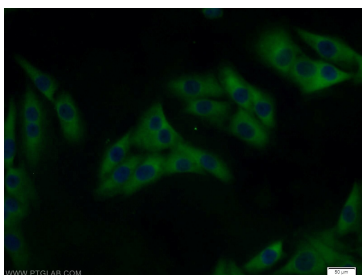
Various lysates were subjected to SDS PAGE followed by western blot with 14602-1-AP (MAGEA6 antibody) at dilution of 1:1500 incubated at room temperature for 1.5 hours.



Immunohistochemical analysis of paraffin-embedded human lung cancer tissue slide using 14602-1-AP (MAGEA6 antibody) at dilution of 1:200 (under 10x lens). Heat mediated antigen retrieval with Tris-EDTA buffer (pH 9.0).



Immunohistochemical analysis of paraffin-embedded human lung cancer tissue slide using 14602-1-AP (MAGEA6 antibody) at dilution of 1:200 (under 40x lens). Heat mediated antigen retrieval with Tris-EDTA buffer (pH 9.0).



Immunofluorescent analysis of A375 cells using 14602-1-AP (MAGEA6 antibody) at dilution of 1:25 and Alexa Fluor 488-conjugated AffiniPure Goat Anti-Rabbit IgG(H+L).