

For Research Use Only

# PKN2 Polyclonal antibody

Catalog Number: 14608-1-AP

Featured Product

2 Publications



## Basic Information

### Catalog Number:

14608-1-AP

### Size:

150ul, Concentration: 450 ug/ml by Nanodrop and 233 ug/ml by Bradford method using BSA as the standard;

### Source:

Rabbit

### Isotype:

IgG

### Immunogen Catalog Number:

AG6164

### GenBank Accession Number:

BC062620

### GeneID (NCBI):

5586

### UNIPROT ID:

Q16513

### Full Name:

protein kinase N2

### Calculated MW:

112 kDa

### Observed MW:

130 kDa

### Purification Method:

Antigen affinity purification

### Recommended Dilutions:

WB 1:500-1:3000

IP 0.5-4.0 ug for 1.0-3.0 mg of total protein lysate

IHC 1:200-1:1000

IF/ICC 1:10-1:100

## Applications

### Tested Applications:

WB, IHC, IF/ICC, FC (Intra), IP, ELISA

### Cited Applications:

WB, IHC

### Species Specificity:

human

### Cited Species:

human, pig

**Note-IHC: suggested antigen retrieval with TE buffer pH 9.0; (\*) Alternatively, antigen retrieval may be performed with citrate buffer pH 6.0**

### Positive Controls:

**WB:** A2780 cells, K-562 cells, HeLa cells, HEK-293 cells, COLO 320 cells, SKOV-3 cells, HEK-293T cells

**IP:** COLO 320 cells,

**IHC:** human stomach tissue, human colon cancer tissue

**IF/ICC:** HepG2 cells, Hela cells

## Notable Publications

Author	Pubmed ID	Journal	Application
Liya Liu	34663329	Cancer Cell Int	WB
Maoliang Ran	30024056	Reprod Domest Anim	WB, IHC

## Storage

### Storage:

Store at -20°C. Stable for one year after shipment.

### Storage Buffer:

PBS with 0.02% sodium azide and 50% glycerol pH 7.3.

Aliquoting is unnecessary for -20°C storage

\*\*\* 20ul sizes contain 0.1% BSA

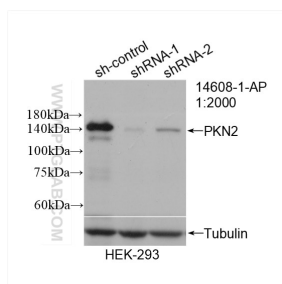
For technical support and original validation data for this product please contact:

T: 1 (888) 4PTGLAB (1-888-478-4522) (toll free in USA), or 1(312) 455-8498 (outside USA)

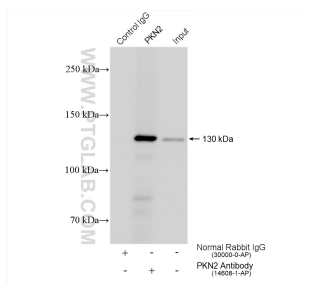
E: [proteintech@ptglab.com](mailto:proteintech@ptglab.com)  
W: [ptglab.com](http://ptglab.com)

This product is exclusively available under Proteintech Group brand and is not available to purchase from any other manufacturer.

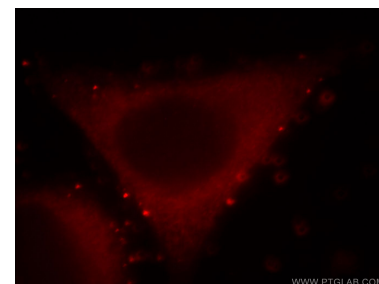
## Selected Validation Data



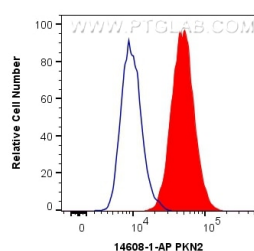
WB result of PKN2 antibody (14608-1-AP; 1:2000; incubated at room temperature for 1.5 hours) with sh-Control and sh-PKN2 transfected HEK-293 cells.



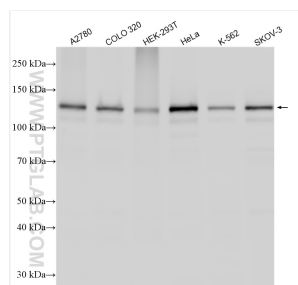
IP result of anti-PKN2 (IP: 14608-1-AP, 4ug; Detection: 14608-1-AP 1:1000) with COLO 320 cells lysate 2560 ug.



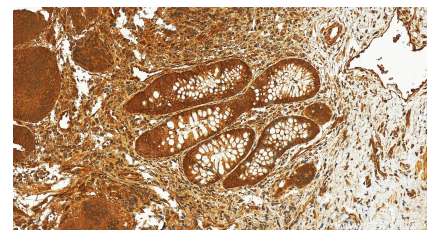
Immunofluorescent analysis of HepG2 cells, using PKN2 antibody 14608-1-AP at 1:25 dilution and Rhodamine-labeled goat anti-rabbit IgG (red).



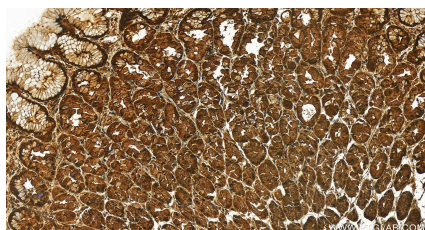
1X10<sup>6</sup> HepG2 cells were intracellularly stained with 0.4 ug Anti-Human PKN2 (14608-1-AP) and CoraLite®488-Conjugated AffiniPure Goat Anti-Rabbit IgG(H+L) at dilution 1:1000 (red), or 0.4 ug Isotype Control. Cells were fixed with 4% PFA and permeabilized with Flow Cytometry Perm Buffer (PF00011-C).



Various lysates were subjected to SDS PAGE followed by western blot with 14608-1-AP (PKN2 antibody) at dilution of 1:1500 incubated at room temperature for 1.5 hours.



Immunohistochemical analysis of paraffin-embedded human colon cancer tissue slide using 14608-1-AP (PKN2 antibody) at dilution of 1:200 (under 20x lens). Heat mediated antigen retrieval with Sodium Citrate buffer (pH 6.0).



Immunohistochemical analysis of paraffin-embedded human stomach tissue slide using 14608-1-AP (PKN2 antibody) at dilution of 1:200 (under 20x lens). Heat mediated antigen retrieval with Tris-EDTA buffer (pH 9.0).