

For Research Use Only

KIF17 Polyclonal antibody

Catalog Number: 14615-1-AP

Featured Product

4 Publications



Basic Information

Catalog Number:

14615-1-AP

Size:

150ul, Concentration: 550 ug/ml by Nanodrop;

Source:

Rabbit

Isotype:

IgG

Immunogen Catalog Number:

AG6217

GenBank Accession Number:

BC065927

GeneID (NCBI):

57576

UNIPROT ID:

Q9P2E2

Full Name:

kinesin family member 17

Calculated MW:

115 kDa

Observed MW:

170 kDa

Purification Method:

Antigen affinity purification

Recommended Dilutions:

WB 1:500-1:3000

IP 0.5-4.0 ug for 1.0-3.0 mg of total protein lysate

IHC 1:50-1:500

IF/ICC 1:200-1:800

Applications

Tested Applications:

WB, IHC, IF/ICC, IP, ELISA

Cited Applications:

WB, IHC, IF, IP, CoIP

Species Specificity:

human, mouse, rat, monkey

Cited Species:

human, mouse

Note-IHC: suggested antigen retrieval with TE buffer pH 9.0; (*) Alternatively, antigen retrieval may be performed with citrate buffer pH 6.0

Positive Controls:

WB : mouse brain tissue, rat brain tissue

IP : mouse brain tissue,

IHC : human gliomas tissue, human brain tissue, mouse brain tissue

IF/ICC : COS-7 cells,

Notable Publications

Author	Pubmed ID	Journal	Application
Tianfu Li	36089118	Cancer Lett	WB,IHC,IF,CoIP
Yan Liu	35678994	Neurosci Bull	WB,IF,IP
Jie Ran	32275885	Dev Cell	WB

Storage

Storage:

Store at -20°C. Stable for one year after shipment.

Storage Buffer:

PBS with 0.02% sodium azide and 50% glycerol pH 7.3.

Aliquoting is unnecessary for -20°C storage

*** 20ul sizes contain 0.1% BSA

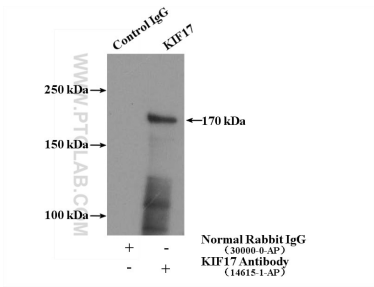
For technical support and original validation data for this product please contact:

T: 1 (888) 4PTGLAB (1-888-478-4522) (toll free in USA), or 1(312) 455-8498 (outside USA)

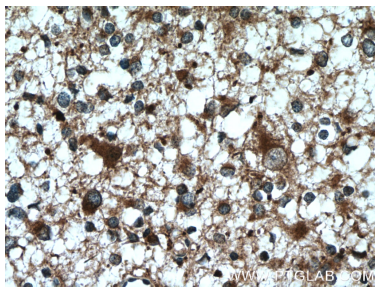
E: proteintech@ptglab.com
W: ptglab.com

This product is exclusively available under Proteintech Group brand and is not available to purchase from any other manufacturer.

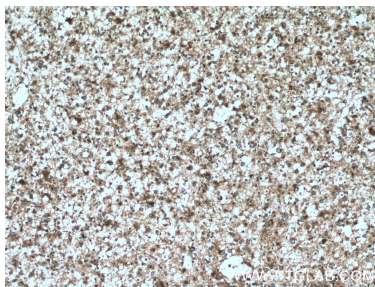
Selected Validation Data



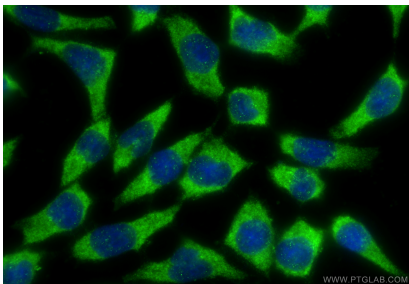
IP result of anti-KIF17 (IP:14615-1-AP, 4ug; Detection:14615-1-AP 1:1000) with mouse brain tissue lysate 4000ug.



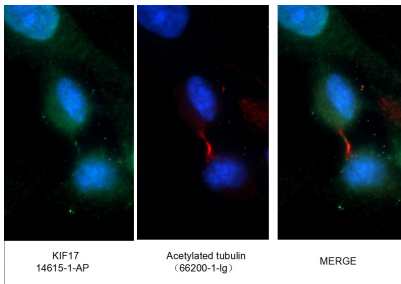
Immunohistochemical analysis of paraffin-embedded human gliomas tissue slide using 14615-1-AP (KIF17 antibody) at dilution of 1:200 (under 40x lens. Heat mediated antigen retrieval with Tris-EDTA buffer (pH 9.0).



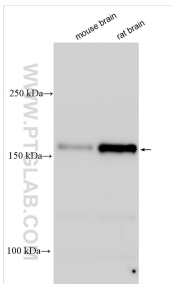
Immunohistochemical analysis of paraffin-embedded human gliomas tissue slide using 14615-1-AP (KIF17 antibody) at dilution of 1:200 (under 10x lens. Heat mediated antigen retrieval with Tris-EDTA buffer (pH 9.0).



Immunofluorescent analysis of (-20°C Ethanol) fixed COS-7 cells using KIF17 antibody (14615-1-AP) at dilution of 1:400 and CoraLite®488-Conjugated Goat Anti-Rabbit IgG(H+L) (SA00013-2).



Immunofluorescent analysis of (-20°C Ethanol) fixed COS-7 cells using 14615-1-AP (KIF17 antibody) at dilution of 1:50 and Alexa Fluor 488-conjugated AffiniPure Goat Anti-Rabbit IgG(H+L).



Various lysates were subjected to SDS PAGE followed by western blot with 14615-1-AP (KIF17 antibody) at dilution of 1:1500 incubated at room temperature for 1.5 hours.