

For Research Use Only

KIF17 Polyclonal antibody, PBS Only

Catalog Number: 14615-1-PBS

Featured Product



Basic Information

Catalog Number:

14615-1-PBS

Size:

100ug, Concentration: 1 mg/ml by Nanodrop;

Source:

Rabbit

Isotype:

IgG

Immunogen Catalog Number:

AG6217

GenBank Accession Number:

BC065927

GeneID (NCBI):

57576

UNIPROT ID:

Q9P2E2

Full Name:

kinesin family member 17

Calculated MW:

115 kDa

Observed MW:

170 kDa

Purification Method:

Antigen affinity purification

Applications

Tested Applications:

WB, IHC, IF/ICC, IP, Indirect ELISA

Species Specificity:

human, mouse, rat, monkey

Background Information

KIF17 is a kinesin superfamily member, encoding a neuron-specific molecular motor. In neurons, KIF17 is responsible for the specialized transport of the N-methyl-D-aspartate receptor NR2B subunit, the glutamate receptor GluR5, and the potassium channel Kv4.2 from the cell body to the dendrites (PMID: 23762210).

Storage

Storage:

Store at -80°C.

Storage Buffer:

PBS only, pH7.3

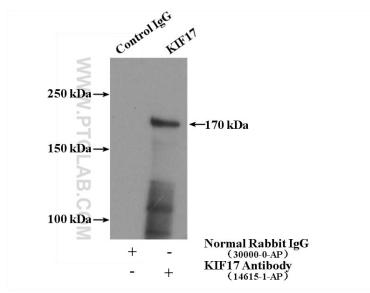
For technical support and original validation data for this product please contact:

T: 1 (888) 4PTGLAB (1-888-478-4522) (toll free in USA), or 1(312) 455-8498 (outside USA)

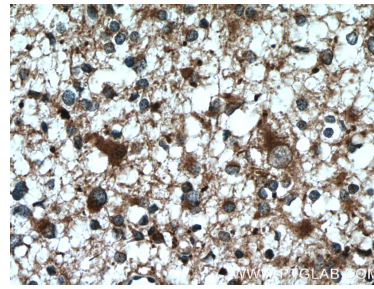
E: proteintech@ptglab.com
W: ptglab.com

This product is exclusively available under Proteintech Group brand and is not available to purchase from any other manufacturer.

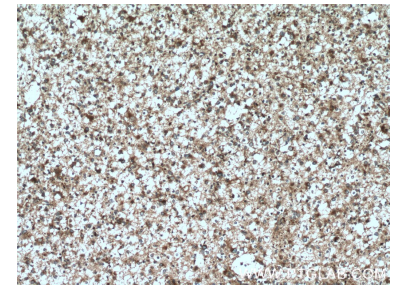
Selected Validation Data



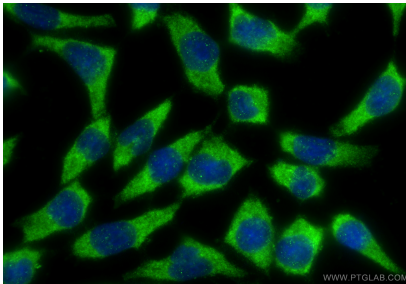
IP result of anti-KIF17 (IP:14615-1-AP, 4ug; Detection:14615-1-AP 1:1000) with mouse brain tissue lysate 4000ug. This data was developed using the same antibody clone with 14615-1-PBS in a different storage buffer formulation.



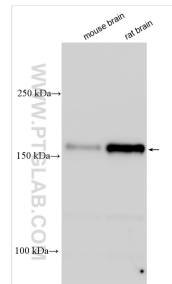
Immunohistochemical analysis of paraffin-embedded human gliomas tissue slide using 14615-1-AP (KIF17 antibody) at dilution of 1:200 (under 40x lens. Heat mediated antigen retrieval with Tris-EDTA buffer (pH 9.0)). This data was developed using the same antibody clone with 14615-1-PBS in a different storage buffer formulation.



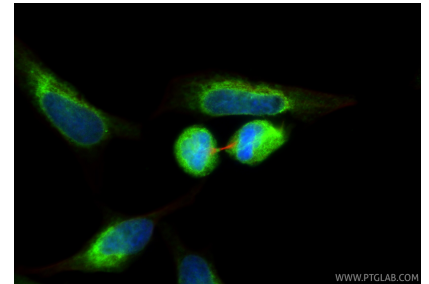
Immunohistochemical analysis of paraffin-embedded human gliomas tissue slide using 14615-1-AP (KIF17 antibody) at dilution of 1:200 (under 10x lens. Heat mediated antigen retrieval with Tris-EDTA buffer (pH 9.0)). This data was developed using the same antibody clone with 14615-1-PBS in a different storage buffer formulation.



Immunofluorescent analysis of (-20°C Ethanol) fixed COS-7 cells using KIF17 antibody (14615-1-AP) at dilution of 1:400 and CoraLite@488-Conjugated Goat Anti-Rabbit IgG(H+L) (SA00013-2). This data was developed using the same antibody clone with 14615-1-PBS in a different storage buffer formulation.



Various lysates were subjected to SDS PAGE followed by western blot with 14615-1-AP (KIF17 antibody) at dilution of 1:1500 incubated at room temperature for 1.5 hours. This data was developed using the same antibody clone with 14615-1-PBS in a different storage buffer formulation.



Immunofluorescent analysis of (4% PFA) fixed HeLa cells using KIF17 antibody (14615-1-AP) at dilution of 1:200 and CoraLite@488-Conjugated Goat Anti-Rabbit IgG(H+L) (SA00013-2), Alpha Tubulin antibody (66031-1-Ig, Clone: 1E4C11, red). This data was developed using the same antibody clone with 14615-1-PBS in a different storage buffer formulation.