

For Research Use Only

OSTM1 Polyclonal antibody

Catalog Number: 14621-1-AP

2 Publications



Basic Information

Catalog Number:

14621-1-AP

Size:

150ul, Concentration: 250 ug/ml by Nanodrop;

Source:

Rabbit

Isotype:

IgG

Immunogen Catalog Number:

AG6254

GenBank Accession Number:

BC068581

GeneID (NCBI):

28962

UNIPROT ID:

Q86WC4

Full Name:

osteopetrosis associated transmembrane protein 1

Calculated MW:

37 kDa

Observed MW:

~ 60 kDa

Purification Method:

Antigen affinity purification

Recommended Dilutions:

WB 1:500-1:1000

IHC 1:50-1:500

IF/ICC 1:50-1:500

Applications

Tested Applications:

WB, IHC, IF/ICC, ELISA

Cited Applications:

WB

Species Specificity:

human, mouse

Cited Species:

human, mouse

Note-IHC: suggested antigen retrieval with TE buffer pH 9.0; (*) Alternatively, antigen retrieval may be performed with citrate buffer pH 6.0

Positive Controls:

WB : 37°C incubated mouse brain tissue, mouse brain membrane protein

IHC : mouse kidney tissue,

IF/ICC : A431 cells,

Background Information

OSTM1 is a type I transmembrane protein. Ostm1 is essential for osteoclast maturation and is responsible for the most severe forms of osteoporosis when mutated in mice and humans. The OSTM1 protein has 10 N-glycosylation sites and has an apparent mass of ~60 kDa after being highly N-glycosylated (PMID: 26598607; PMID: 32764302). The OSTM1 protein can also be detected at ~30-45 kDa and ~70-80 kDa in some literatures (PMID: 16525474; PMID: 24159188; PMID: 20830208).

Notable Publications

Author	Pubmed ID	Journal	Application
Chunqiang Ma	32188736	J Virol	WB
Sandi Shen	37106712	Biology (Basel)	WB

Storage

Storage:

Store at -20°C. Stable for one year after shipment.

Storage Buffer:

PBS with 0.02% sodium azide and 50% glycerol pH 7.3.

Aliquoting is unnecessary for -20°C storage

*** 20ul sizes contain 0.1% BSA

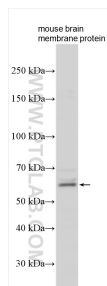
For technical support and original validation data for this product please contact:

T: 1 (888) 4PTGLAB (1-888-478-4522) (toll free in USA), or 1(312) 455-8498 (outside USA)

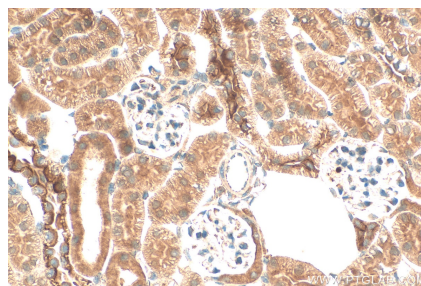
E: proteintech@ptglab.com
W: ptglab.com

This product is exclusively available under Proteintech Group brand and is not available to purchase from any other manufacturer.

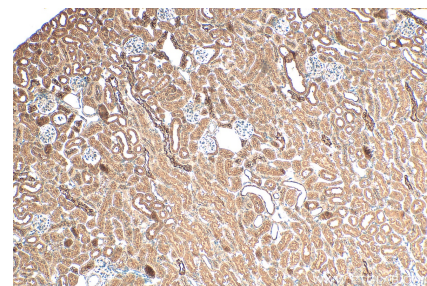
Selected Validation Data



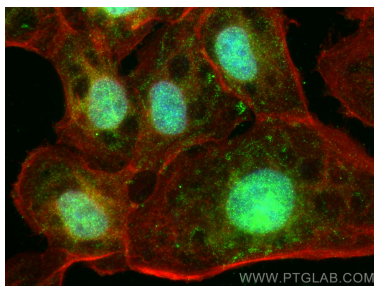
mouse brain membrane protein lysates were subjected to SDS PAGE followed by western blot with 14621-1-AP (OSTM1 antibody) at dilution of 1:500 incubated at room temperature for 1.5 hours.



Immunohistochemical analysis of paraffin-embedded mouse kidney tissue slide using 14621-1-AP (OSTM1 antibody) at dilution of 1:200 (under 40x lens). Heat mediated antigen retrieval with Tris-EDTA buffer (pH 9.0).



Immunohistochemical analysis of paraffin-embedded mouse kidney tissue slide using 14621-1-AP (OSTM1 antibody) at dilution of 1:200 (under 10x lens). Heat mediated antigen retrieval with Tris-EDTA buffer (pH 9.0).



Immunofluorescent analysis of (4% PFA) fixed A431 cells using OSTM1 antibody (14621-1-AP) at dilution of 1:200 and CoraLite® 488-Conjugated AffiniPure Goat Anti-Rabbit IgG(H+L) (SA00013-2), CL594-Phalloidin (red).