

For Research Use Only

RPL13A Polyclonal antibody

Catalog Number: 14633-1-AP



Basic Information

Catalog Number: 14633-1-AP	GenBank Accession Number: BC065236	Purification Method: Antigen affinity purification
Size: 150ul , Concentration: 450 ug/ml by Nanodrop;	GeneID (NCBI): 23521	Recommended Dilutions: WB 1:1000-1:5000 IHC 1:200-1:800
Source: Rabbit	UNIPROT ID: P40429	
Isotype: IgG	Full Name: ribosomal protein L13a	
Immunogen Catalog Number: AG6212	Calculated MW: 23 kDa	
	Observed MW: 25-28 kDa	

Applications

Tested Applications: WB, IHC, ELISA	Positive Controls:
Species Specificity: human, mouse	WB : A549 cells, Jurkat cells, HEK-293 cells, HeLa cells, RAW264.7 cells
Note-IHC: suggested antigen retrieval with TE buffer pH 9.0; (*) Alternatively, antigen retrieval may be performed with citrate buffer pH 6.0	IHC : human stomach cancer tissue,

Background Information

Ribosomal protein L13a(RPL13a) is a member of the L13 ribosomal protein family and a structural component of the large 60S ribosomal subunit. It's a reference gene(RG) that stably expressed not only during differentiation, but also during expansion to higher passages. And it's suggested as a RG for a variety research field. RPL13a is a key component of the IFN-gamma-activated inhibitor of translation(GAIT) complex, which inhibits translation of a select group of inflammation-related transcripts via binding to the 3' UTR of target mRNA. once phosphorylated of Ser77 by ZIPIK, RPL13a released from the complex.

Storage

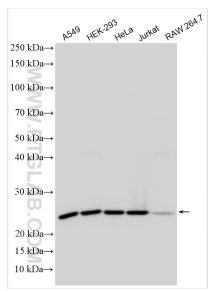
Storage:
Store at -20°C. Stable for one year after shipment.
Storage Buffer:
PBS with 0.02% sodium azide and 50% glycerol pH 7.3.
Aliquoting is unnecessary for -20°C storage

*** 20ul sizes contain 0.1% BSA

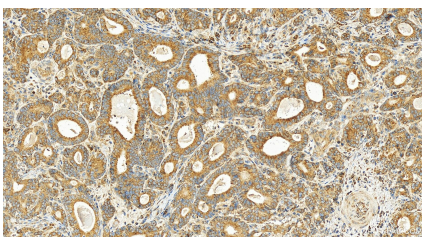
For technical support and original validation data for this product please contact:
T: 1 (888) 4PTGLAB (1-888-478-4522) (toll free in USA), or 1(312) 455-8498 (outside USA)
E: proteintech@ptglab.com
W: ptglab.com

This product is exclusively available under Proteintech Group brand and is not available to purchase from any other manufacturer.

Selected Validation Data



Various lysates were subjected to SDS PAGE followed by western blot with 14633-1-AP (RPL13A antibody) at dilution of 1:2500 incubated at room temperature for 1.5 hours.



Immunohistochemical analysis of paraffin-embedded human stomach cancer tissue slide using 14633-1-AP (RPL13A antibody) at dilution of 1:400 (under 20x lens). Heat mediated antigen retrieval with Tris-EDTA buffer (pH 9.0).