

For Research Use Only

RPL13A Polyclonal antibody, PBS Only

Catalog Number:14633-1-PBS



Basic Information

Catalog Number:

14633-1-PBS

Size:

100ug , Concentration: 1 mg/ml by Nanodrop;

Source:

Rabbit

Isotype:

IgG

Immunogen Catalog Number:

AG6212

GenBank Accession Number:

BC065236

GeneID (NCBI):

23521

UNIPROT ID:

P40429

Full Name:

ribosomal protein L13a

Calculated MW:

23 kDa

Observed MW:

25-28 kDa

Purification Method:

Antigen affinity purification

Applications

Tested Applications:

WB, IHC, Indirect ELISA

Species Specificity:

human, mouse

Background Information

Ribosomal protein L13a(RPL13a) is a member of the L13 ribosomal protein family and a structural component of the large 60S ribosomal subunit. It's a reference gene(RG) that stably expressed not only during differentiation, but also during expansion to higher passages. And it's suggested as a RG for a variety research field. RPL13a is a key component of the IFN-gamma-activated inhibitor of translation(GAIT) complex, which inhibits translation of a select group of inflammation-related transcripts via binding to the 3' UTR of target mRNA. Once phosphorylated of Ser77 by ZIPK, RPL13a released from the complex.

Storage

Storage:

Store at -80°C.

Storage Buffer:

PBS Only

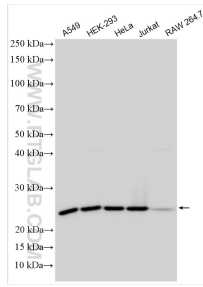
For technical support and original validation data for this product please contact:

T: 1 (888) 4PTGLAB (1-888-478-4522) (toll free in USA), or 1(312) 455-8498 (outside USA)

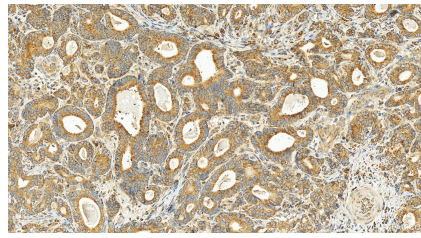
E: proteintech@ptglab.com
W: ptglab.com

This product is exclusively available under Proteintech Group brand and is not available to purchase from any other manufacturer.

Selected Validation Data



Various lysates were subjected to SDS PAGE followed by western blot with 14633-1-AP (RPL13A antibody) at dilution of 1:2500 incubated at room temperature for 1.5 hours. This data was developed using the same antibody clone with 14633-1-PBS in a different storage buffer formulation.



Immunohistochemical analysis of paraffin-embedded human stomach cancer tissue slide using 14633-1-AP (RPL13A antibody) at dilution of 1:400 (under 20x lens). Heat mediated antigen retrieval with Tris-EDTA buffer (pH 9.0). This data was developed using the same antibody clone with 14633-1-PBS in a different storage buffer formulation.