

For Research Use Only

PPP1R15B Polyclonal antibody, PBS Only

Catalog Number: 14634-1-PBS

Featured Product



Basic Information

Catalog Number:

14634-1-PBS

Size:

100ug, Concentration: 1 mg/ml by Nanodrop;

Source:

Rabbit

Isotype:

IgG

Immunogen Catalog Number:

AG6213

GenBank Accession Number:

BC065280

GeneID (NCBI):

84919

UNIPROT ID:

Q5SWA1

Full Name:

protein phosphatase 1, regulatory (inhibitor) subunit 15B

Calculated MW:

79 kDa

Observed MW:

100-110 kDa

Purification Method:

Antigen affinity purification

Applications

Tested Applications:

WB, IHC, IF/ICC, IP, Indirect ELISA

Species Specificity:

human, mouse, rat

Background Information

Protein phosphatase 1 regulatory subunit 15B(PPP1R15B) is a member of PPP1R15 family, it forms a complex with protein phosphatase1(PP1) and NCK1/2, maintaining low levels of EIF2S1 phosphorylation in unstressed cells, thus is also named constitutive repressor of eIF2alpha phosphorylation (CReP). PPP1R15B is associated in endoplasmic reticulum (ER) stress response resulting to a role in translation regulation. Knock-down of PPP1R15B strongly protected mammalian cells against oxidative stress, peroxynitrite stress, and more modestly against accumulation of malformed proteins in the ER. Recently, PPP1R15B was found to associate with cell membranes and regulate membrane traffic in a PP1c-independent manner, suggesting a novel link between translation and traffic. MW of PPP1R15B is 80 kDa. Observed MW of PPP1R15B is from 100-110 kDa maybe due to phosphorylation (PMID: 28492545).

Storage

Storage:

Store at -80°C.

Storage Buffer:

PBS only, pH7.3

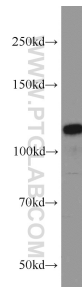
For technical support and original validation data for this product please contact:

T: 1 (888) 4PTGLAB (1-888-478-4522) (toll free in USA), or 1(312) 455-8498 (outside USA)

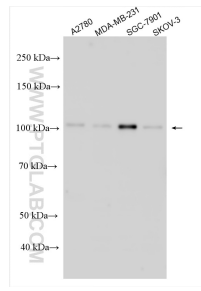
E: proteintech@ptglab.com
W: ptglab.com

This product is exclusively available under Proteintech Group brand and is not available to purchase from any other manufacturer.

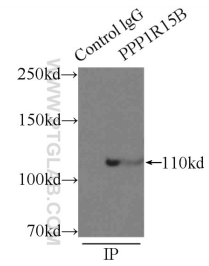
Selected Validation Data



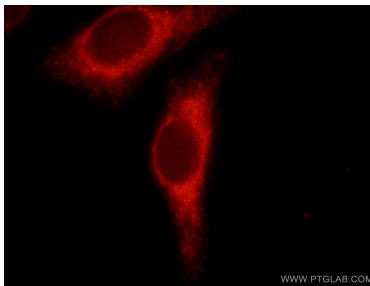
SGC-7901 cells were subjected to SDS PAGE followed by western blot with 14634-1-AP (PPP1R15B antibody) at dilution of 1:1000 incubated at room temperature for 1.5 hours. This data was developed using the same antibody clone with 14634-1-PBS in a different storage buffer formulation.



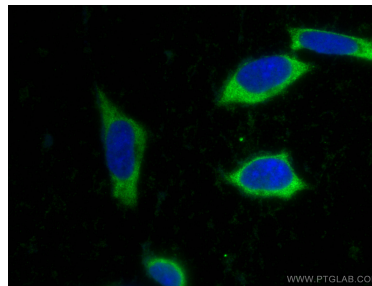
Various lysates were subjected to SDS PAGE followed by western blot with 14634-1-AP (PPP1R15B antibody) at dilution of 1:15000 incubated at room temperature for 1.5 hours. This data was developed using the same antibody clone with 14634-1-PBS in a different storage buffer formulation.



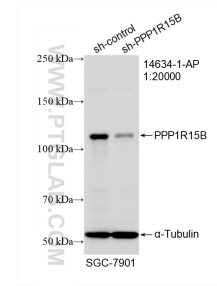
IP result of anti-PPP1R15B (IP:14634-1-AP, 3ug; Detection:14634-1-AP 1:1000) with MCF-7 cells lysate 2500ug. This data was developed using the same antibody clone with 14634-1-PBS in a different storage buffer formulation.



Immunofluorescent analysis of HepG2 cells using 14634-1-AP (PPP1R15B antibody) at dilution of 1:50 and Rhodamine-labeled goat anti-rabbit IgG. This data was developed using the same antibody clone with 14634-1-PBS in a different storage buffer formulation.



Immunofluorescent analysis of (-20°C Ethanol) fixed SH-SY5Y cells using PPP1R15B antibody (14634-1-AP) at dilution of 1:400 and CoraLite®488-Conjugated AffiniPure Goat Anti-Rabbit IgG(H+L). This data was developed using the same antibody clone with 14634-1-PBS in a different storage buffer formulation.



WB result of PPP1R15B antibody (14634-1-AP; 1:20000; incubated at room temperature for 1.5 hours) with sh-Control and sh-PPP1R15B transfected SGC-7901 cells. This data was developed using the same antibody clone with 14634-1-PBS in a different storage buffer formulation.