

For Research Use Only

# CNPY2, MSAP Polyclonal antibody

Catalog Number: 14635-1-AP

Featured Product

12 Publications



## Basic Information

### Catalog Number:

14635-1-AP

### Size:

150ul, Concentration: 300 µg/ml by Nanodrop and 153 µg/ml by Bradford method using BSA as the standard;

### Source:

Rabbit

### Isotype:

IgG

### Immunogen Catalog Number:

AG6214

### GenBank Accession Number:

BC065015

### GeneID (NCBI):

10330

### Full Name:

canopy 2 homolog (zebrafish)

### Calculated MW:

21 kDa

### Observed MW:

17-21 kDa

### Purification Method:

Antigen affinity purification

### Recommended Dilutions:

WB 1:1000-1:8000

IP 0.5-4.0 µg for IP and 1:500-1:1000 for WB

IHC 1:200-1:800

IF 1:20-1:200

## Applications

### Tested Applications:

FC, IF, IHC, IP, WB, ELISA

### Cited Applications:

IF, IHC, WB

### Species Specificity:

human, mouse, rat

### Cited Species:

human, mouse, rat

### Positive Controls:

**WB**: HepG2 cells, mouse pancreas tissue, human liver tissue, mouse liver tissue, rat liver tissue

**IP**: HepG2 cells,

**IHC**: human liver tissue, human pancreas cancer tissue

**IF**: HepG2 cells,

**Note-IHC: suggested antigen retrieval with TE buffer pH 9.0; (\*) Alternatively, antigen retrieval may be performed with citrate buffer pH 6.0**

## Background Information

CNPY2, also named as MSAP, TMEM4 and ZSIG9, is a positive regulator of neurite outgrowth. It interacts with the ezrin-radixin-moesin (ERM)-like myosin regulatory light chain-interacting protein (MIR), and the two proteins are co-localized in cell lines and in primary neurons. CNPY2 can stabilize MRLC and thus bring about an increase in neurite outgrowth. (PMID: 12826659) This antibody is specific to CNPY2.

## Notable Publications

Author	Pubmed ID	Journal	Application
Feng Hong	28869608	Nat Struct Mol Biol	WB
Lina Zhao	31625681	J Cell Mol Med	WB
Chun-Ling Guo	36422742	Apoptosis	WB,IF

## Storage

### Storage:

Store at -20°C. Stable for one year after shipment.

### Storage Buffer:

PBS with 0.02% sodium azide and 50% glycerol pH 7.3.

Aliquoting is unnecessary for -20°C storage

\*\*\* 20ul sizes contain 0.1% BSA

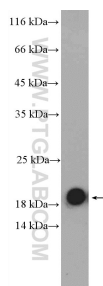
For technical support and original validation data for this product please contact:

T: 1 (888) 4PTGLAB (1-888-478-4522) (toll free in USA), or 1(312) 455-8498 (outside USA)

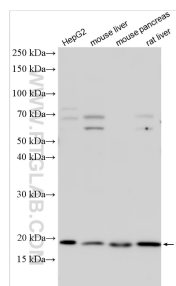
E: proteintech@ptglab.com  
W: ptglab.com

This product is exclusively available under Proteintech Group brand and is not available to purchase from any other manufacturer.

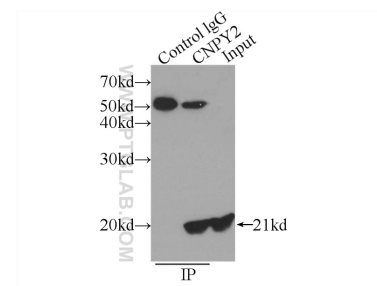
## Selected Validation Data



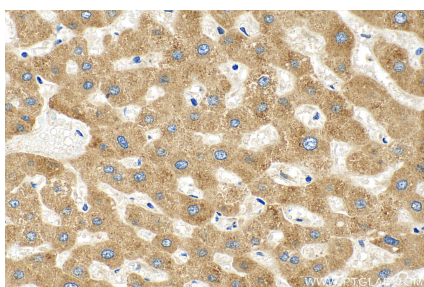
mouse pancreas tissue was subjected to SDS PAGE followed by western blot with 14635-1-AP (CNPY2, MSAP antibody) at dilution of 1:300 incubated at room temperature for 1.5 hours.



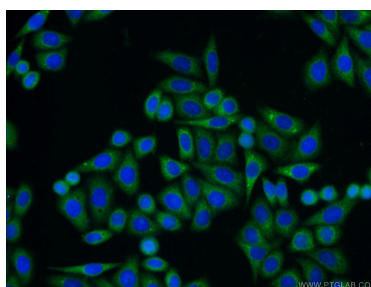
Various lysates were subjected to SDS PAGE followed by western blot with 14635-1-AP (CNPY2, MSAP antibody) at dilution of 1:4000 incubated at room temperature for 1.5 hours.



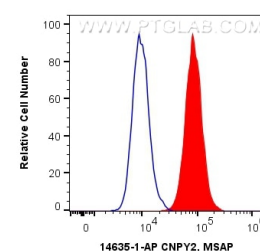
IP Result of anti-CNPY2, MSAP (IP: 14635-1-AP, 3ug; Detection: 14635-1-AP 1:500) with HepG2 cells lysate 600ug.



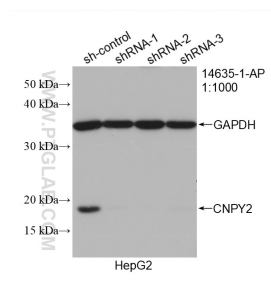
Immunohistochemical analysis of paraffin-embedded human liver tissue slide using 14635-1-AP (CNPY2, MSAP antibody) at dilution of 1:400 (under 40x lens). Heat mediated antigen retrieval with Sodium Citrate buffer (pH 6.0).



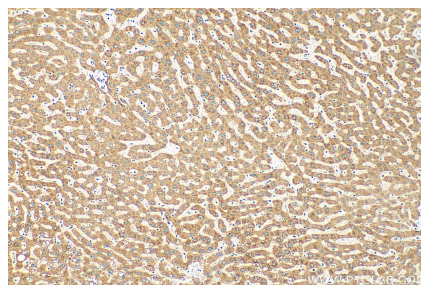
Immunofluorescent analysis of HepG2 cells using 14635-1-AP (CNPY2, MSAP antibody) at dilution of 1:50 and Alexa Fluor 488-conjugated AffiniPure Goat Anti-Rabbit IgG(H+L).



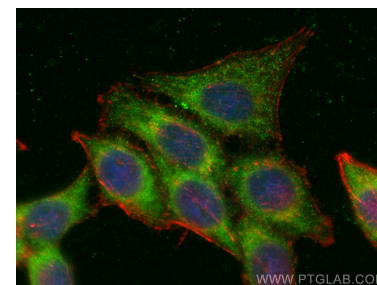
1X10<sup>6</sup> HepG2 cells were intracellularly stained with 0.4 ug Anti-Human CNPY2, MSAP (14635-1-AP) and CoraLite®488-Conjugated AffiniPure Goat Anti-Rabbit IgG(H+L) at dilution 1:1000 (red), or 0.4 ug Isotype Control. Cells were fixed with 4% PFA and permeabilized with Flow Cytometry Perm Buffer (PF00011-C).



WB result of CNPY2, MSAP antibody (14635-1-AP; 1:1000; incubated at room temperature for 1.5 hours) with sh-Control and sh-CNPY2, MSAP transfected HepG2 cells.



Immunohistochemical analysis of paraffin-embedded human liver tissue slide using 14635-1-AP (CNPY2, MSAP antibody) at dilution of 1:400 (under 10x lens). Heat mediated antigen retrieval with Sodium Citrate buffer (pH 6.0).



Immunofluorescent analysis of (-20°C Ethanol) fixed HepG2 cells using CNPY2, MSAP antibody (14635-1-AP) at dilution of 1:200 and CoraLite®488-Conjugated AffiniPure Goat Anti-Rabbit IgG(H+L), CL594-Phalloidin (red).